

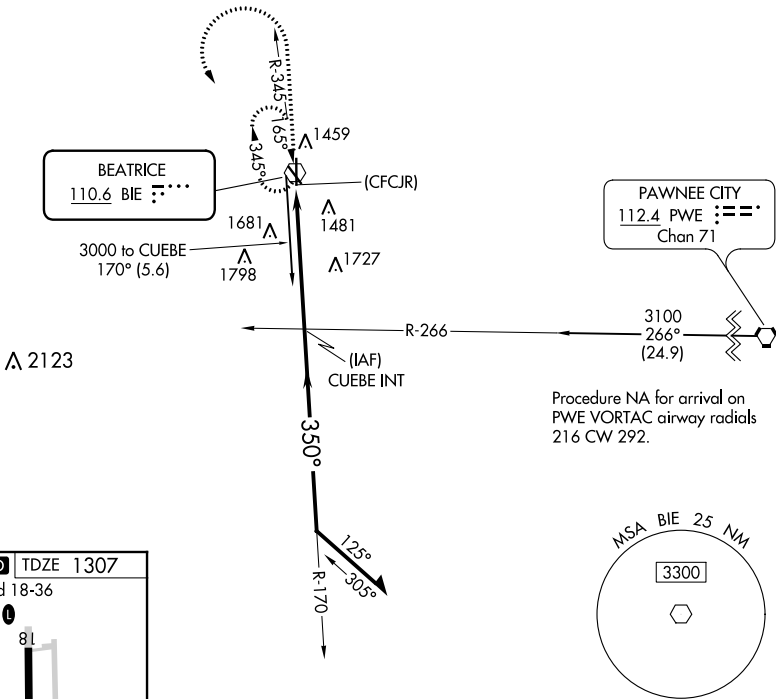
VOR BIE <b>110.6</b>	APP CRS <b>350°</b>	Rwy Idg TDZE Apt Elev	<b>5602</b> <b>1307</b> <b>1324</b>
-------------------------	------------------------	-----------------------------	---

**VOR RWY 36**  
BEATRICE MUNI (BIE)

<p>For inop ALS, increase S-36 Cat A/B visibility to 1 SM and Cat C/D visibility to 1¼ SM.</p>	<p>MALS R</p>	<p>MISSED APPROACH: Climb to 3000 then left turn direct BIE VOR and hold.</p>

NC-2, 25 MAR 2021 to 22 APR 2021

NC-2, 25 MAR 2021 to 22 APR 2021



ELEV 1324	<b>D</b>	TDZE 1307
MIRL Rwys 14-32 and 18-36		
REIL Rwys 14 and 32		

Knots	60	90	120	150	180
Min:Sec	5:12	3:28	2:36	2:05	1:44

		<p>3000</p> <p>↑</p>			
		<p>3000</p> <p>↑</p>			
<p>(CFCJR)</p>		<p>350°</p> <p>3000</p> <p>350°</p> <p>3000</p> <p>170°</p> <p>Remain within 10 NM</p>			
<p>5.2 NM</p>		<p>3.00°</p> <p>TCH 41</p>			
CATEGORY	A	B	C	D	
S-36	1940-¾	633 (700-¾)	1940-1⅓	633 (700-1⅓)	
<b>C</b> CIRCLING	1940-1	616 (700-1)	2000-2 676 (700-2)	2100-2½ 776 (800-2½)	