

WAAS CH 69620 W14A	APP CRS 139°	Rwy Idg TDZE Apt Elev	4401 1319 1324
--	------------------------	-----------------------------	---

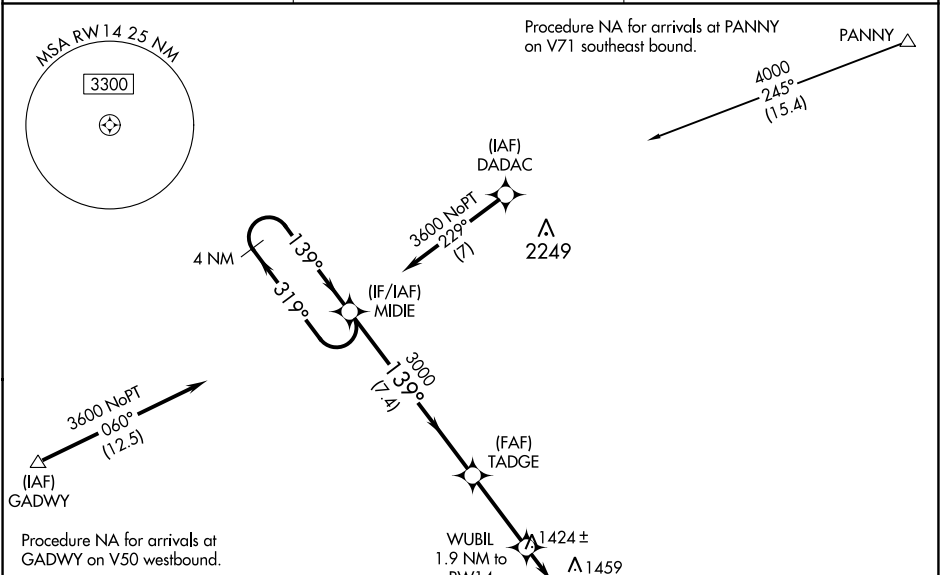
RNAV (GPS) RWY 14

BEATRICE MUNI (BIE)

▽ For uncompensated Baro-VNAV systems, LNAV/VNAV NA below -17°C (2°F) or above 35°C (95°F).
▲ DME/DME RNP-0.3 NA.

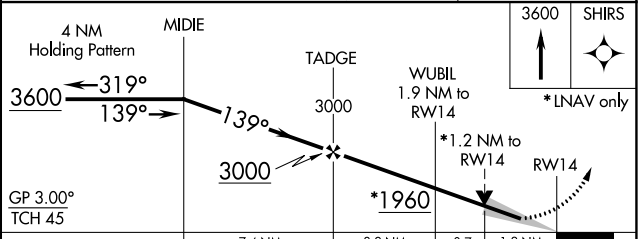
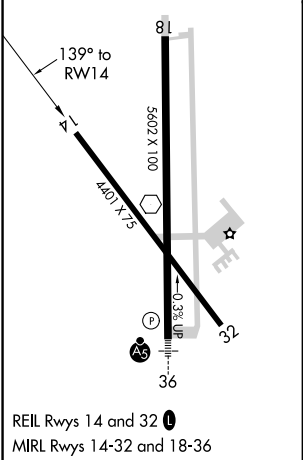
MISSED APPROACH: Climb to 3600 direct SHIRS and hold.

AWOS-3 125.325	MINNEAPOLIS CENTER 126.4 317.7	UNICOM 122.8 (CTAF) 0
--------------------------	--	---------------------------------



Procedure NA for arrivals at GADWY on V50 westbound.

ELEV 1324	D	TDZE 1319
-----------	----------	-----------



CATEGORY	A	B	C	D
LPV DA		1569-1	250 (300-1)	
LNAV/VNAV DA		1569-1	250 (300-1)	
LNAV MDA	1760-1	441 (500-1)	1760-1 $\frac{3}{8}$	441 (500-1 $\frac{3}{8}$)
C CIRCLING	1820-1	496 (500-1)	2000-2 676 (700-2)	2100-2 $\frac{1}{2}$ 776 (800-2 $\frac{1}{2}$)

NC-2, 25 MAR 2021 to 22 APR 2021

NC-2, 25 MAR 2021 to 22 APR 2021