

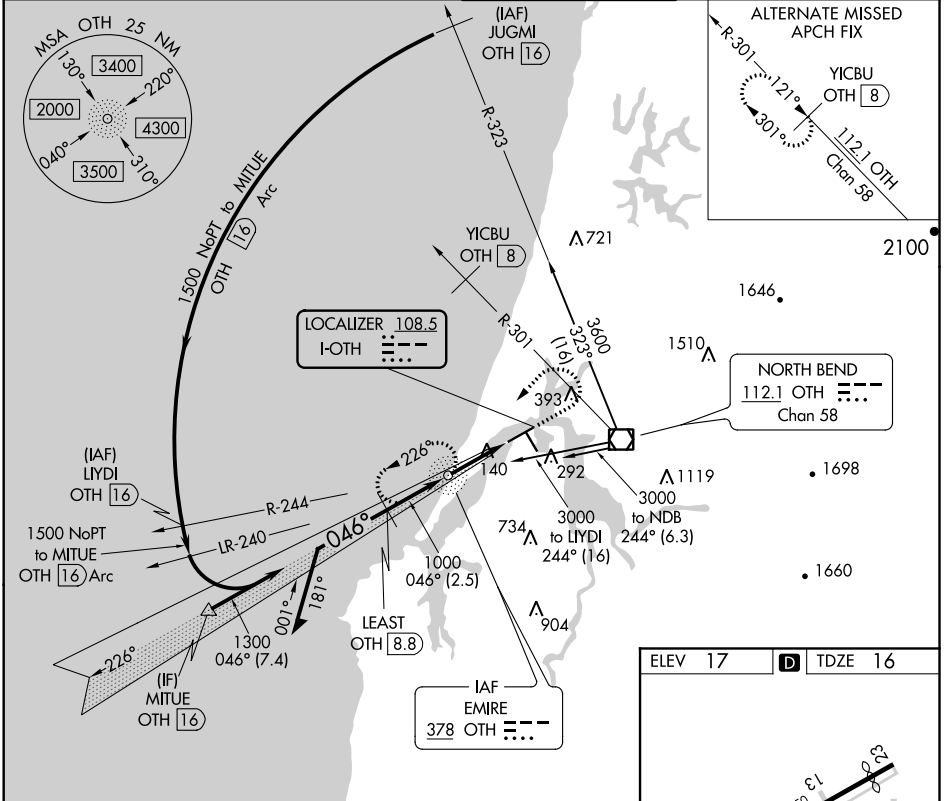
LOC I-OTH 108.5	APP CRS 046°	Rwy Idg 5320
		TDZE 16
		Apt Elev 17

COPTER ILS or LOC RWY 5

SOUTHWEST OREGON RGNL (OTH)

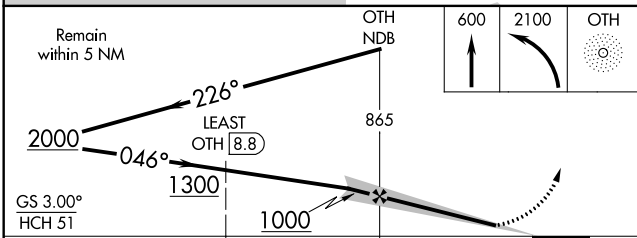
ADF and DME required.	MALSR 	MISSED APPROACH: Climb to 600 then climbing left turn to 2100 direct OTH NDB and hold, continue climb-in-hold to 2100.
-----------------------	-----------	------------------------------------------------------------------------------------------------------------------------

AWOS-3PT 135.075	SEATTLE CENTER 127.55 254.35	NORTH BEND TOWER* 118.45 (CTAF) 0	GND CON 127.1
----------------------------	----------------------------------------	---------------------------------------------	-------------------------



NW-1, 25 MAR 2021 to 22 APR 2021

NW-1, 25 MAR 2021 to 22 APR 2021



ELEV 17	D	TDZE 16			
HIRL Rwy 5-23					
MIRL Rwy 13-31					
REIL Rwys 13, 23 and 31					
FAF to MAP 2.5 NM					
Knots	45	60	75	90	105
Min:Sec	3:20	2:30	2:00	1:40	1:26