

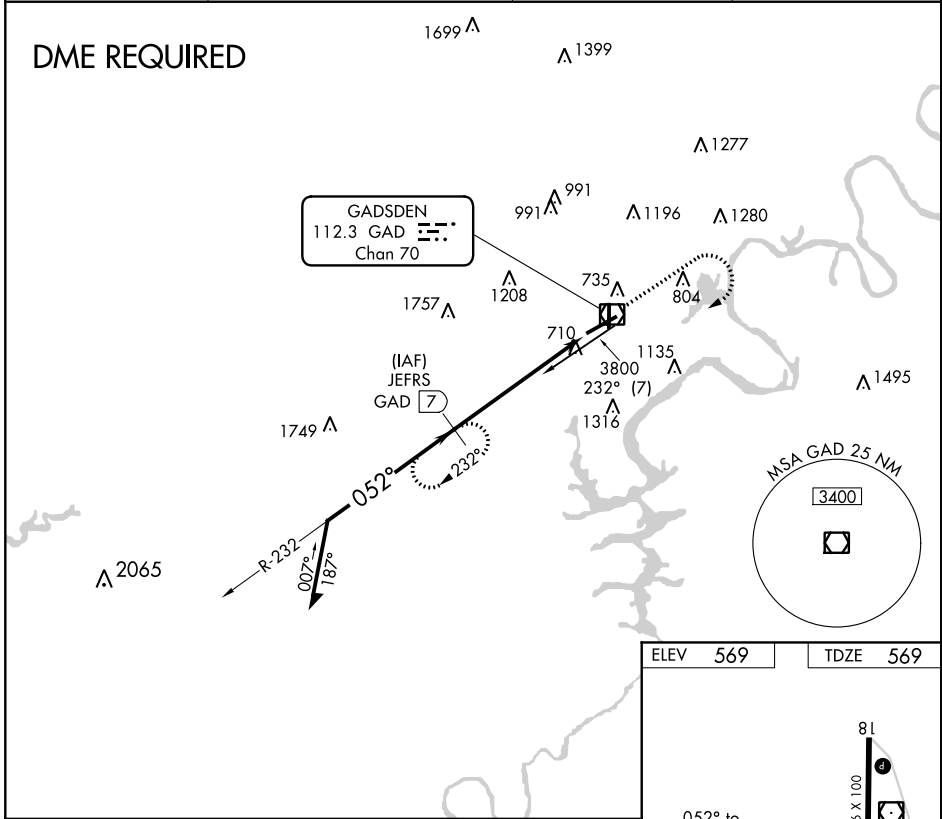
VOR/DME GAD <b>112.3</b> Chan <b>70</b>	APP CRS <b>052°</b>	Rwy Idg TDZE Apt Elev	<b>6802</b> <b>569</b> <b>569</b>
---	------------------------	-----------------------------	---

**VOR RWY 6**  
NORTHEAST ALABAMA RGNL (GAD)

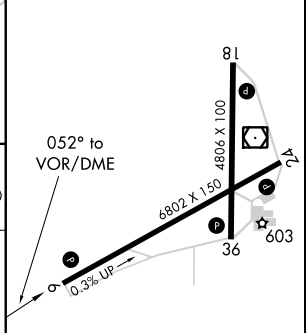
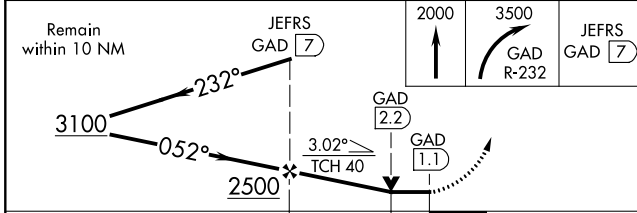
**⚠** When local altimeter setting not received, use Anniston altimeter setting and increase all MDAs 80 feet; increase S-6 Cat C/D visibility ¼ mile and Circling Cat C ½ SM. VDP NA when using Anniston altimeter setting. DME required.

**MISSED APPROACH:** Climb to 2000 then climbing right turn to 3500 on GAD VOR/DME R-232 to JEFRS/7 DME and hold.

AWOS-3PT <b>127.825</b>	BIRMINGHAM APP CON <b>125.45 279.65</b>	CLNC DEL <b>120.05 257.7</b>	UNICOM <b>122.8 (CTAF)</b>
----------------------------	--	---------------------------------	-------------------------------



ELEV 569	TDZE 569
----------	----------



CATEGORY	A	B	C	D
S-6	960-1 391 (400-1)		960-1½ 391 (400-1½)	
<b>C</b> CIRCLING	1100-1 531 (600-1)		1440-2½ 871 (900-2½)	1680-3 1111 (1200-3)

HIRL Rwy 6-24	<b>Ⓛ</b>
MIRL Rwy 18-36	<b>Ⓛ</b>
REIL Rwy 6-24	<b>Ⓛ</b>
FAF to MAP 5.9 NM	
Knots	60 90 120 150 180
Min:Sec	5:54 3:56 2:57 2:22 1:58

SE-4, 25 MAR 2021 to 22 APR 2021

SE-4, 25 MAR 2021 to 22 APR 2021