

WAAS CH 65706 W06A	APP CRS 064°	Rwy Idg TDZE 569 Apt Elev 569	6802
--	------------------------	---	-------------

RNAV (GPS) RWY 6

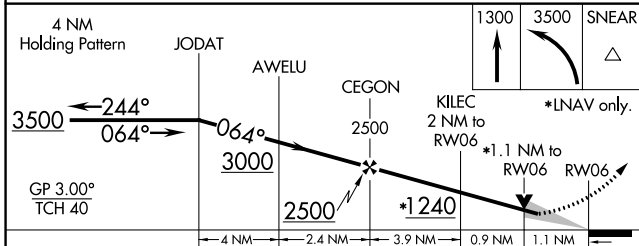
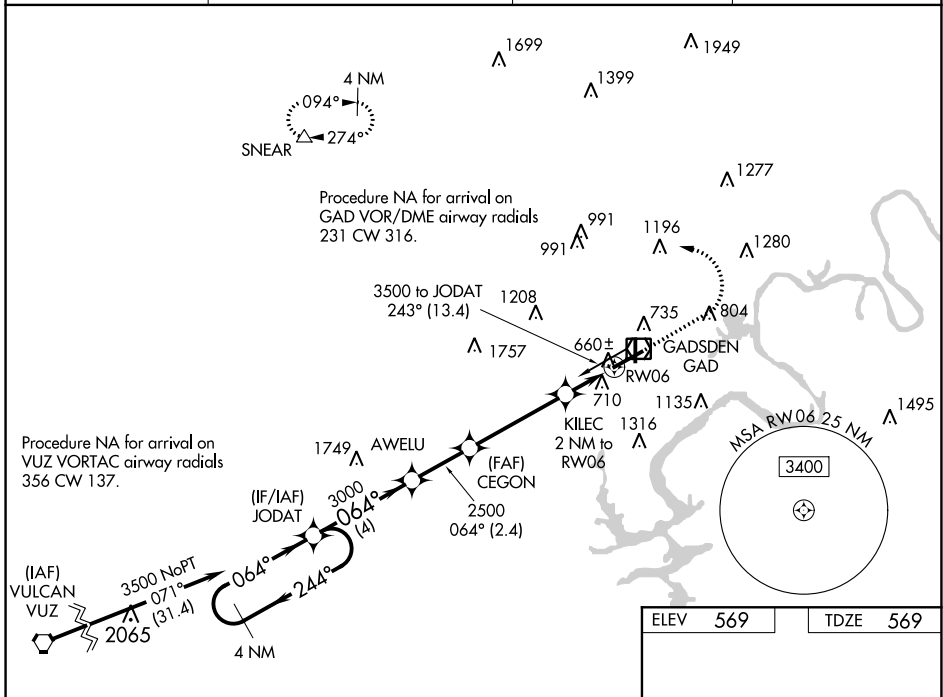
NORTHEAST ALABAMA RGNL (GAD)

RNP APCH.

▼ For uncompensated Baro-VNAV systems, LNAV/VNAV NA below -16°C or above 54°C.
▲ When local altimeter setting is not received, use Anniston altimeter setting and increase all DAs 66 feet and increase all MDAs 80 feet; increase LPV all Cats visibility 1/8 SM, and increase LNAV Cats C/D and Circling Cat C visibility 1/4 SM. Baro-VNAV and VDP NA when using Anniston altimeter setting.

MISSED APPROACH: Climb to 1300 then climbing left turn to 3500 direct SNEAR and hold.

AWOS-3PT 127.825	BIRMINGHAM APP CON 125.45 279.65	CLNC DEL 120.05 257.7	UNICOM 122.8 (CTAF)
----------------------------	--	---------------------------------	-------------------------------



ELEV	569	TDZE	569
------	-----	------	-----

HIRL Rwy 6-24 (L)
 MIRL Rwy 18-36 (L)
 REIL Rwy 6-24 (L)

CATEGORY	A	B	C	D
LPV DA		769-3/4	200 (200-3/4)	
LNAV/VNAV DA		890-1 1/8	321 (400-1 1/8)	
LNAV MDA	960-1	391 (400-1)	960-1 1/8	391 (400-1 1/8)
CIRCLING	1100-1	531 (600-1)	1100-1 1/2	1120-2
			531 (600-1 1/2)	551 (600-2)

SE-4, 25 MAR 2021 to 22 APR 2021

SE-4, 25 MAR 2021 to 22 APR 2021