

WAAS CH <b>65905</b> <b>W24A</b>	APP CRS <b>244°</b>	Rwy Idg TDZE Apt Elev	<b>6802</b> <b>560</b> <b>569</b>
--	------------------------	-----------------------------	---

# RNAV (GPS) RWY 24

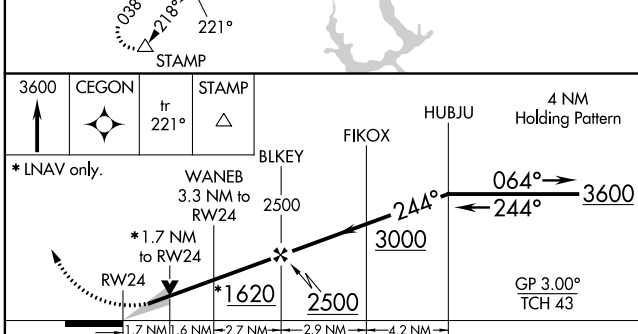
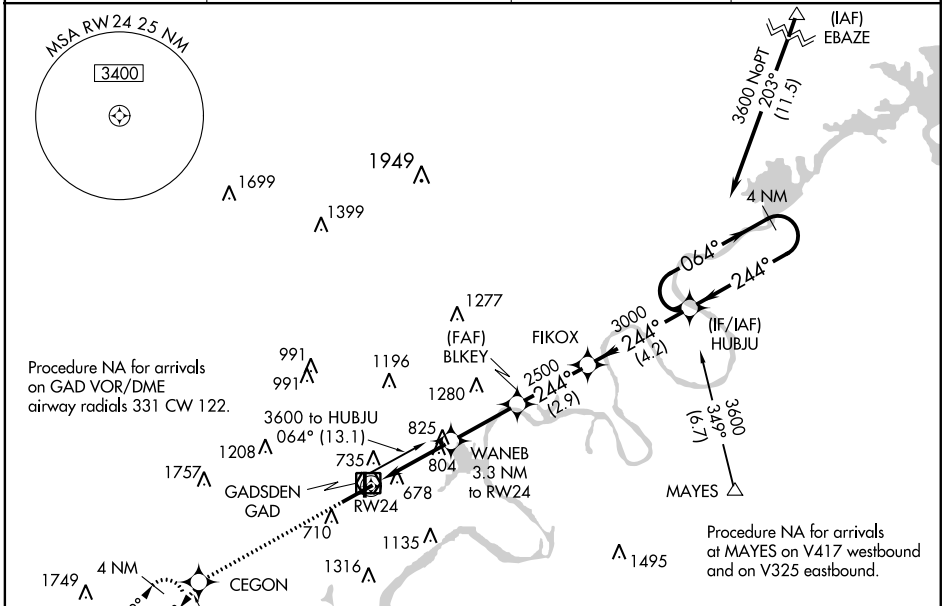
NORTHEAST ALABAMA RGNL (GAD)

RNP APCH.

▼ For uncompensated Baro-VNAV systems, LNAV/VNAV NA below -16°C or above 54°C.  
 ▲ When local altimeter setting not received, use Annonisn altimeter setting and increase all DAs 66 feet and increase all MDAs 80 feet; increase LPV all Cats visibility 1/8 SM, and increase LNAV Cats C/D and Circling Cat C visibility 1/4 SM. Baro-VNAV and VDP NA when using Annonisn altimeter setting.

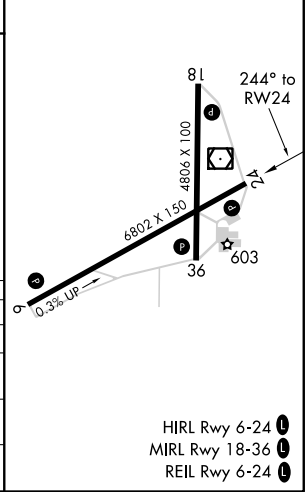
MISSED APPROACH: Climb to 3600 direct CEGON and on track 221° to STAMP and hold, continue climb-in-hold to 3600.

AWOS-3PT <b>127.825</b>	BIRMINGHAM APP CON <b>125.45 279.65</b>	CLNC DEL <b>120.05 257.7</b>	UNICOM <b>122.8 (CTAF)</b>
----------------------------	--	---------------------------------	-------------------------------



ELEV	569	TDZE	560
------	-----	------	-----

CATEGORY	A	B	C	D
LPV DA		781-3/4	221 (300-3/4)	
LNAV/VNAV DA		1016-1 1/8	456 (500-1 1/8)	
LNAV MDA	1140-1	580 (600-1)	1140-1 3/4	580 (600-1 3/4)
CIRCLING	1140-1	571 (600-1)	1140-1 3/4	1140-2 571 (600-2)



SE-4, 25 MAR 2021 to 22 APR 2021

SE-4, 25 MAR 2021 to 22 APR 2021