


LOC/DME I-HQM 108.7 Chan 24	APP CRS 241°	Rwy Idg 5000 TDZE 16 Apt Elev 18
--	------------------------	---

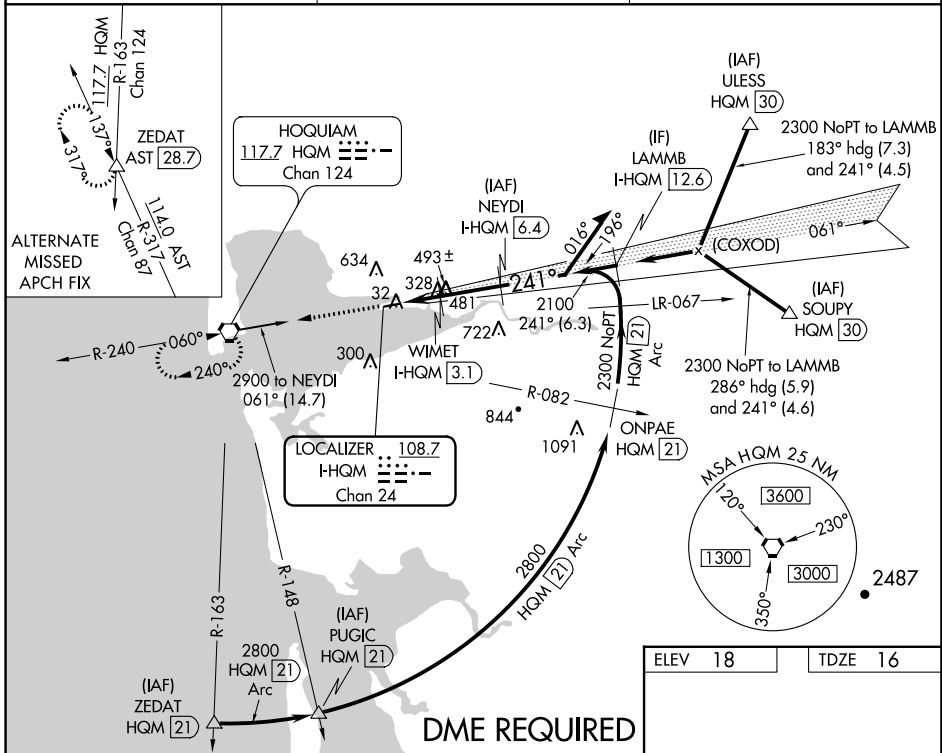
ILS or LOC/DME RWY 24

BOWERMAN (HQM)

⚠ When local alimeter setting not received, procedure NA. For inop MALSRS, increase S-ILS Cat C visibility to 7/8 mile and S-LOC Cat C visibility to 1 3/8 mile. Circling NA northwest of Rwy 6-24.

MALSRS
 MISSED APPROACH: Climb to 2500 direct HQM VORTAC and hold.

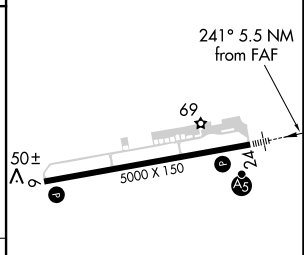
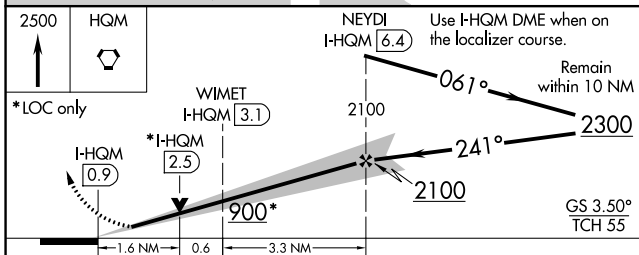
ASOS 135.775	SEATTLE CENTER 128.3 269.0	UNICOM 122.7 (CTAF) 0
------------------------	--------------------------------------	---------------------------------



NW-1, 25 MAR 2021 to 22 APR 2021

NW-1, 25 MAR 2021 to 22 APR 2021

ELEV 18	TDZE 16
---------	---------



CATEGORY	A	B	C	D
S-ILS 24	216-1/2	200 (200-1/2)	286-1/2 270 (300-1/2)	NA
S-LOC 24	580-1/2	564 (600-1/2)	580-1 1/4 564 (600-1 1/4)	NA
CIRCLING	580-1	562 (600-1)	580-1 5/8 562 (600-1 5/8)	NA

REIL Rwy 6 0	HIRL Rwy 6-24 0
--------------	-----------------