

VOR/DME PVW 112.9 Chan 76	APP CRS 024°	Rwy Idg 5997 TDZE 3374 Apt Elev 3374
---	------------------------	---

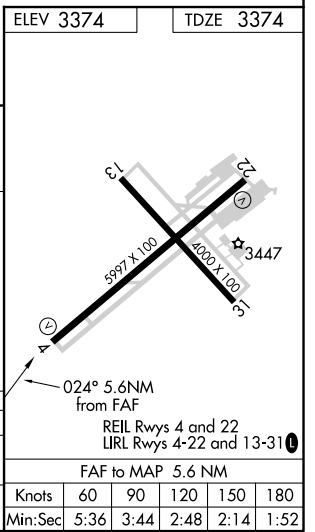
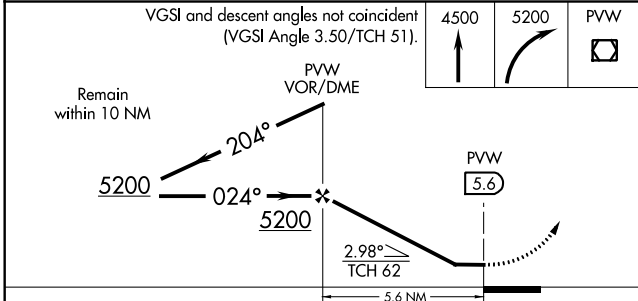
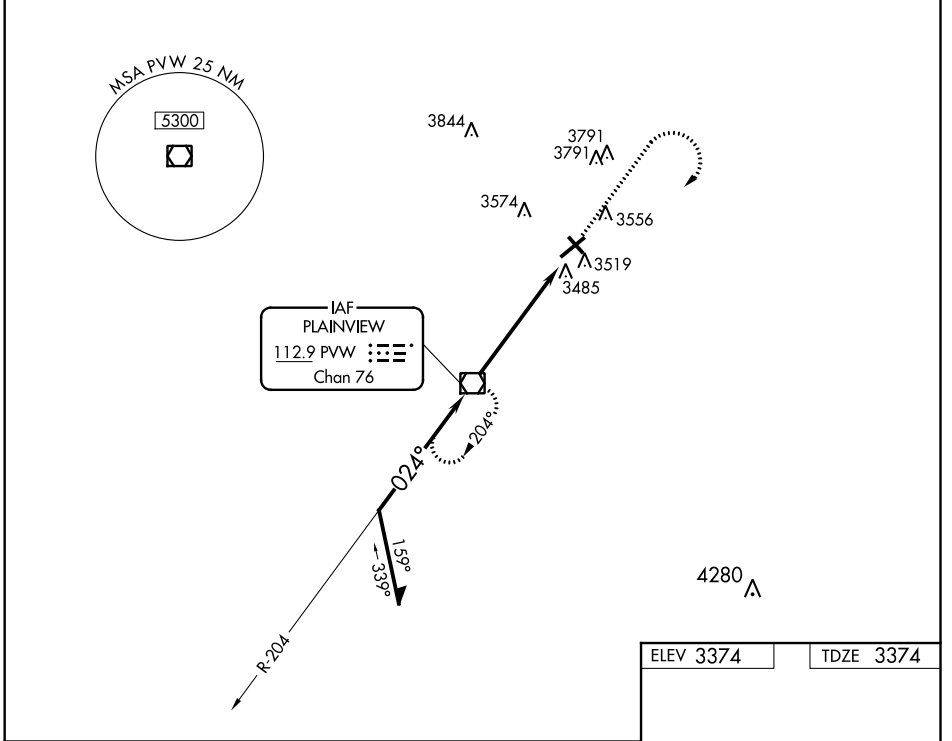
VOR RWY 4

HALE COUNTY (PVW)

NA When local altimeter setting not received, use Lubbock altimeter setting and increase all MDA, 100 feet, increase S-4 visibility Cat C to 1½, Cat D and Circling Cat C to 1¼. Helicopter visibility reduction below ¾ mile NA.

MISSED APPROACH: Climb to 4500, then climbing right turn to 5200 direct PVW VOR/DME and hold.

ASOS 119.675	LUBBOCK APP CON 119.2 351.8	CINC DEL 121.7	UNICOM 123.0 (CTAF)
------------------------	---------------------------------------	--------------------------	-------------------------------



CATEGORY	A	B	C	D
S-4	3840-1 466 (500-1)		3840-1½ 466 (500-1½)	
CIRCLING	3920-1 546 (600-1)	3940-1 566 (600-1)	3940-1½ 566 (600-1½)	3940-2 566 (600-2)

SC-2, 25 MAR 2021 to 22 APR 2021

SC-2, 25 MAR 2021 to 22 APR 2021