

LOM CI	APP CRS	Rwy Idg	<b>7203</b>
<b>400</b>	<b>337°</b>	TDZE	<b>796</b>
		Apt Elev	<b>799</b>

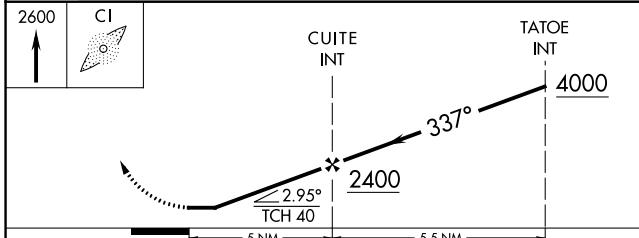
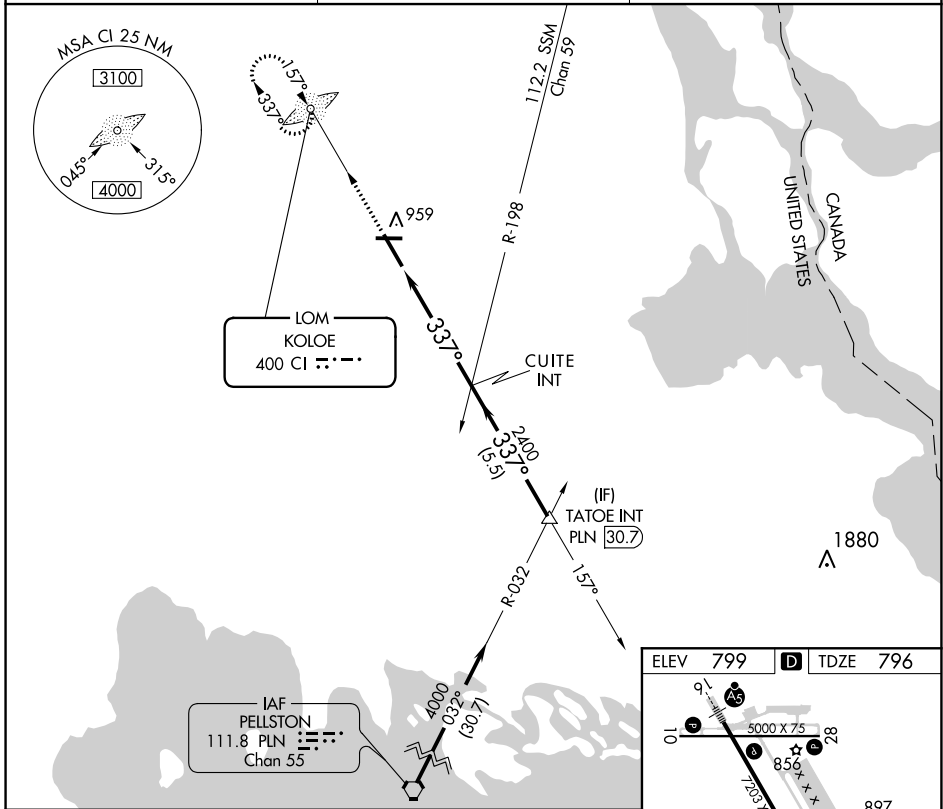
# NDB RWY 34

CHIPPEWA COUNTY INTL (CIU)

**⚠ NA** When local altimeter setting not received, use Sault-Ste Marie Muni/Sanderson Field altimeter setting and increase all MDA 60 feet and increase S-34 Cat C/D visibility to 1 3/8.

**MISSED APPROACH:** Climb to 2600 direct KOLOE LOM and hold.

AWOS-3PT <b>127.575</b>	TORONTO CENTER <b>132.65 344.5</b>	UNICOM <b>123.0 (CTAF)</b>
----------------------------	---------------------------------------	-------------------------------



ELEV	799	TDZE	796
REIL Rwy 10, 28 and 34			
MIRL Rwy 10-28			
HIRL Rwy 16-34			
FAF to MAP 5 NM			
Knots	60	90	120 150 180
Min:Sec	5:00	3:20	2:30 2:00 1:40

CATEGORY	A	B	C	D
S-34	1220-1 424 (500-1)		1220-1 1/4 424 (500-1 1/4)	
<b>C</b> CIRCLING	1260-1 461 (500-1)		1260-1 1/2 461 (500-1 1/2)	1360-2 561 (600-2)

EC-1, 25 MAR 2021 to 22 APR 2021

EC-1, 25 MAR 2021 to 22 APR 2021