

VORTAC LNY <b>117.7</b> Chan <b>124</b>	APP CRS <b>098°</b>	Rwy Ldg TDZE Apt Elev	<b>N/A</b> <b>N/A</b> <b>1308</b>
---	------------------------	-----------------------------	---

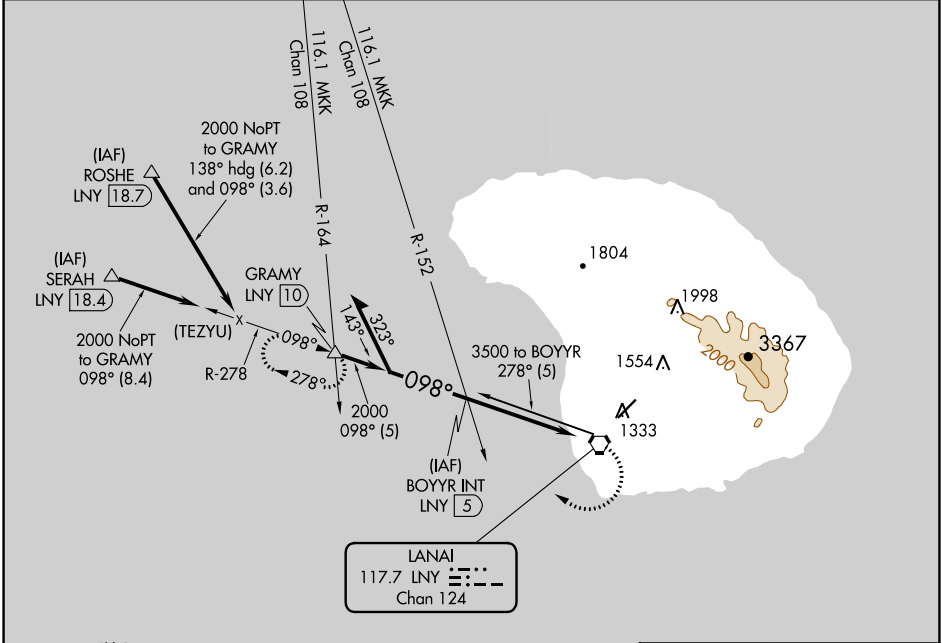
# VOR or TACAN or GPS-A

LANAI (LNY)(PHNY)

**⚠** When local altimeter not received, procedure not authorized, except for operators with approved weather reporting service. Circling Rwy 21 NA at night.

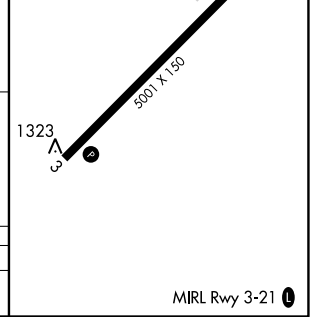
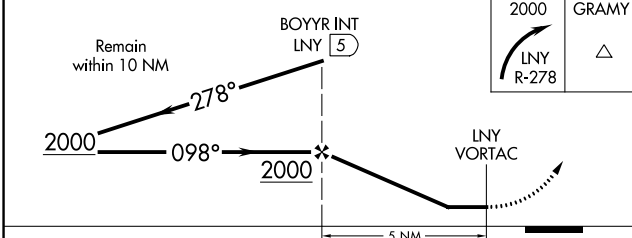
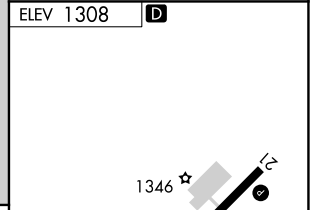
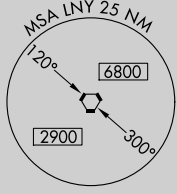
**⚠** MISSED APPROACH: Climbing right turn to 2000 via LNY R-278 to GRAMY INT/LNY 10 DME and hold.

AWOS-3P <b>118.375</b>	HCF CENTER <b>119.3 307.1</b>	CTAF <b>122.9</b> <b>Ⓛ</b>
---------------------------	----------------------------------	-------------------------------



PAC, 25 FEB 2021 to 22 APR 2021

PAC, 25 FEB 2021 to 22 APR 2021



CATEGORY	A	B	C	D
CIRCLING	1840-1½ 532 (600-1½)	1880-1½ 572 (600-1½)	1900-1½ 592 (600-1½)	1900-2 592 (600-2)

MIRL Rwy 3-21 **Ⓛ**