

APP CRS	Rwy Idg	6500
349°	TDZE	96
	Apt Elev	153

RNAV (RNP) Z RWY 35

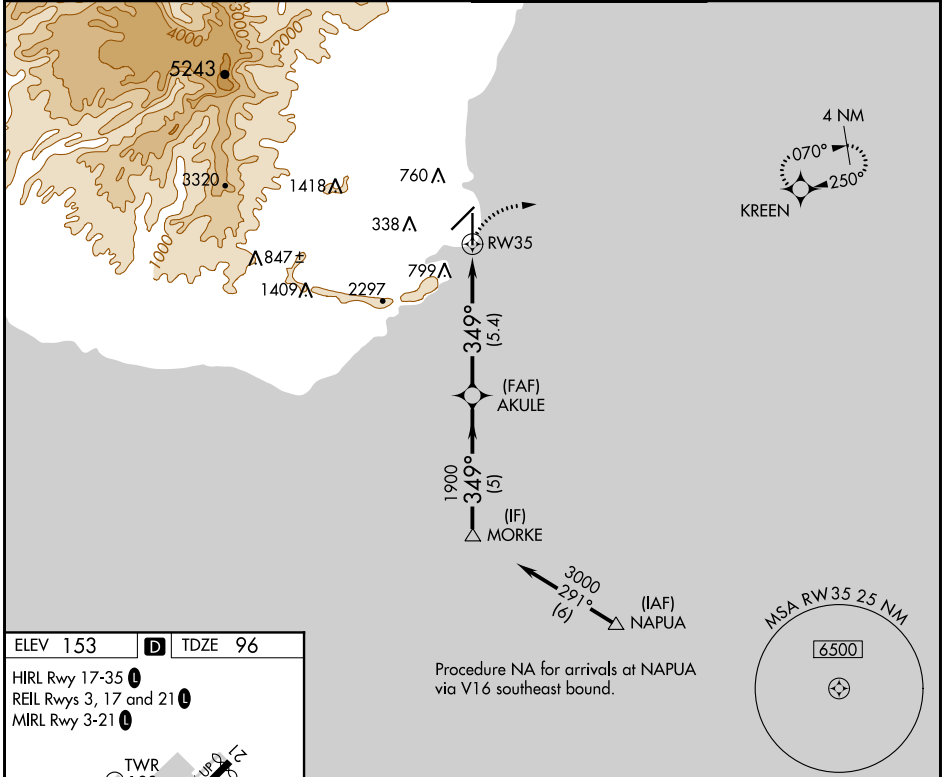
LIHUE (LIH)(PHLI)

V GPS required. For inoperative MALSR, increase RNP 0.30 visibility to 1¾. For uncompensated Baro-VNAV systems, procedure NA below 14°C (57°F) or above 48°C (119°F).

MALSR

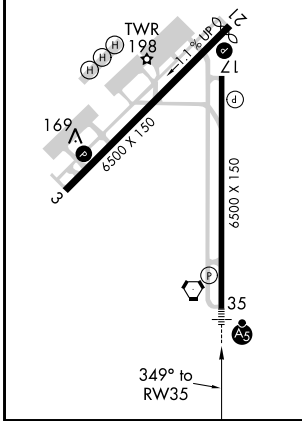

MISSED APPROACH: Climbing right turn to 3000 direct KREEN and hold.

ATIS 127.2	HCF CENTER 126.5 269.4	LIHUE TOWER * 118.9(CTAF) 263.1	GND CON 121.9
----------------------	----------------------------------	---	-------------------------

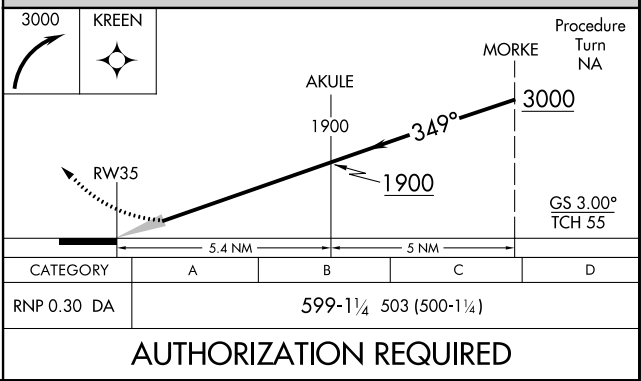
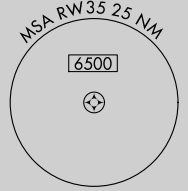


ELEV 153	D	TDZE 96
----------	----------	---------

HIRL Rwy 17-35
 REIL Rwys 3, 17 and 21
 MIRL Rwy 3-21



Procedure NA for arrivals at NAPUA via V16 southeast bound.



PAC: 25 FEB 2021 to 22 APR 2021

PAC: 25 FEB 2021 to 22 APR 2021