

APP CRS	Rwy Idg	6295
214°	TDZE	118
	Apt Elev	153

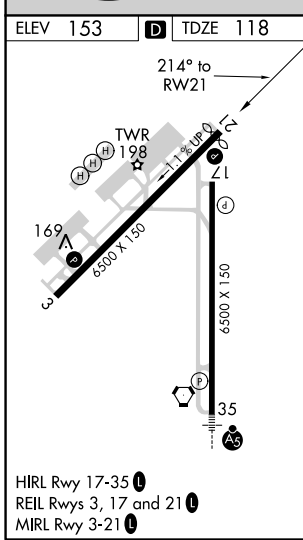
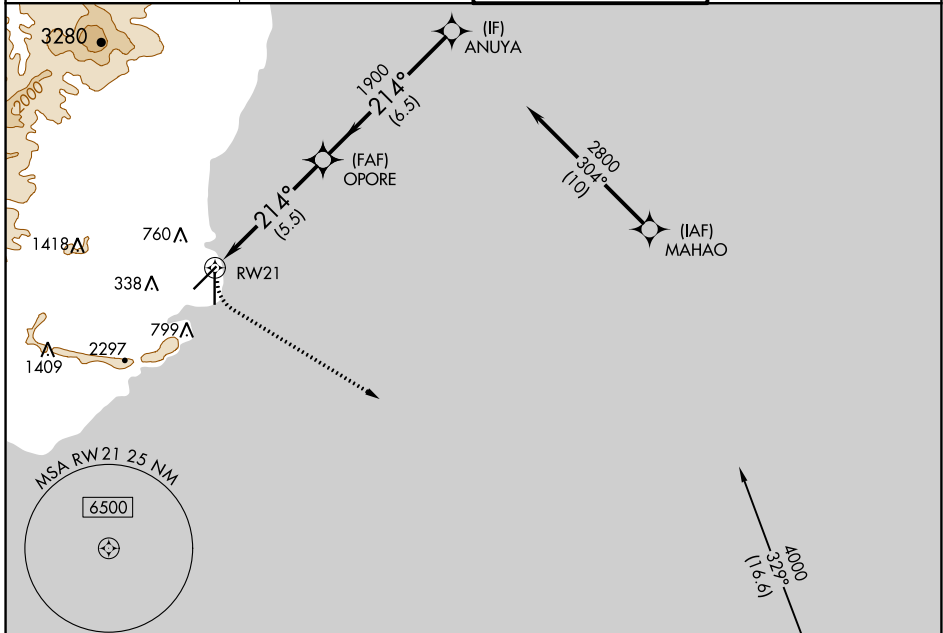
RNAV (RNP) Z RWY 21

LIHUE (LIH)(PHLI)

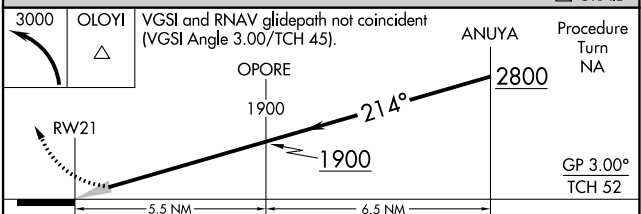
⚠ For uncompensated Baro-VNAV systems, procedure NA below 14°C (57°F) or above 48°C (119°F). GPS required.
 *Missed approach requires minimum climb rate of 350 feet per NM to 2500.

MISSED APPROACH: Climbing left turn to 3000 direct OLOYI and hold.

ATIS 127.2	HCF CENTER 126.5 269.4	LIHUE TOWER ★ 118.9(CTAF) 0 263.1	GND CON 121.9
----------------------	----------------------------------	---	-------------------------



Procedure NA for arrivals at GRAIL via V16 southeast bound and at OLOYI via V15 southeast bound.



3000	OLOYI	VGSI and RNAV glidepath not coincident (VGSI Angle 3.00/TCH 45).	ANUYA	Procedure Turn NA
			2800	
	RW21		1900	
			1900	
				GP 3.00°
				TCH 52

CATEGORY	A	B	C	D
RNP 0.30 DA*	663-2 545 (600-2)			
RNP 0.30 DA	1078-4 960 (1000-4)			

AUTHORIZATION REQUIRED

PAC, 25 FEB 2021 to 22 APR 2021

PAC, 25 FEB 2021 to 22 APR 2021