

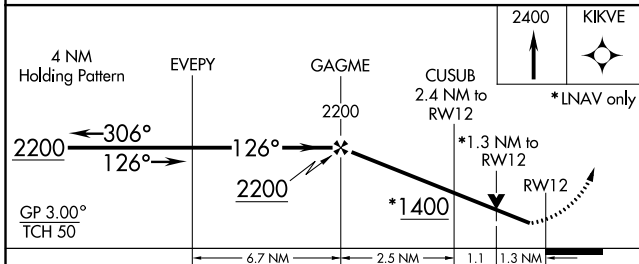
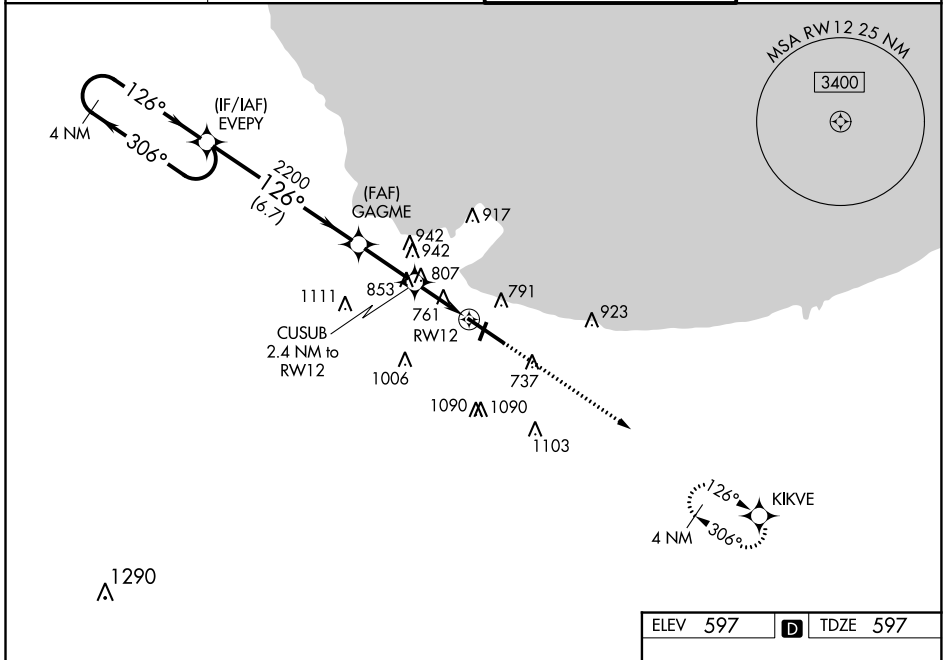
WAAS CH 70623 W12A	APP CRS 126°	Rwy Idg TDZE Apt Elev	7959 597 597
--	------------------------	-----------------------------	---

RNAV (GPS) Y RWY 12

GARY/CHICAGO INTL (GYY)

<p>▼ ▲</p>	<p>For uncompensated Baro-VNAV systems, LNAV/VNAV NA below -16°C (4°F) or above 54°C (130°F). DME/DME RNP-0.3 NA. Rwy 12 helicopter visibility reduction below ¾ SM NA.</p>	<p>MISSED APPROACH: Climb to 2400 direct KIKVE and hold.</p>
----------------	---	--

<p>ATIS 134.575</p>	<p>CHICAGO APP CON 133.1 285.6</p>	<p>GARY TOWER ★ 125.6 (CTAF) 0</p>	<p>GND CON 121.9</p>
--------------------------------	---	---	---------------------------------



ELEV 597	D	TDZE 597
----------	---	----------

The detailed airport diagram shows the layout of GARY/CHICAGO INTL (GYY). It includes Runway 12 (RW12), Runway 20 (RW20), and Runway 12-30 (RW12-30). Taxiways shown include Taxiway A (TAXI A), Taxiway B (TAXI B), Taxiway C (TAXI C), Taxiway D (TAXI D), Taxiway E (TAXI E), Taxiway F (TAXI F), Taxiway G (TAXI G), Taxiway H (TAXI H), Taxiway I (TAXI I), Taxiway J (TAXI J), Taxiway K (TAXI K), Taxiway L (TAXI L), Taxiway M (TAXI M), Taxiway N (TAXI N), Taxiway O (TAXI O), Taxiway P (TAXI P), Taxiway Q (TAXI Q), Taxiway R (TAXI R), Taxiway S (TAXI S), Taxiway T (TAXI T), Taxiway U (TAXI U), Taxiway V (TAXI V), Taxiway W (TAXI W), Taxiway X (TAXI X), Taxiway Y (TAXI Y), and Taxiway Z (TAXI Z). Navigation aids shown include VORTAC (VORTAC), VORTOM (VORTOM), and VORTOM (VORTOM). The diagram also shows the location of the Tower (TWR 662) and the Tower (TWR 662).

REIL Rwy 2, 12 and 20
HIRL Rwy 12-30
MIRL Rwy 2-20

EC-2, 25 MAR 2021 to 22 APR 2021

EC-2, 25 MAR 2021 to 22 APR 2021