

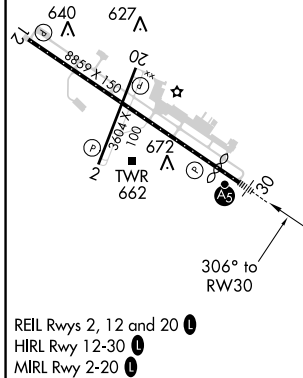
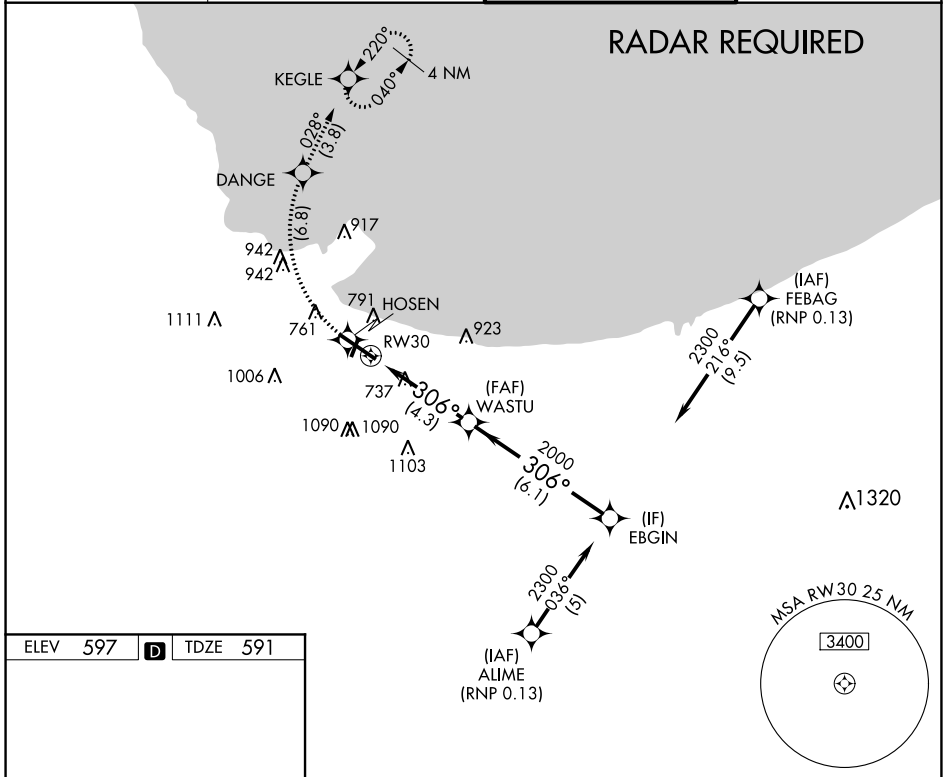
APP CRS <b>306°</b>	Rwy Idg <b>7959</b>
	TDZE <b>591</b>
	Apt Elev <b>597</b>

# RNAV (RNP) Z RWY 30

GARY/CHICAGO INTL (GYY)

<p><b>⚠</b> For uncompensated Baro-VNAV systems, procedure NA below -16°C (4°F) or above 54°C (130°F). Missed approach requires RNP less than 1.0. RF and GPS required.</p>	<p>MALSR</p>	<p>MISSED APPROACH: Climb to 2100 on track 306° to HOSEN, right turn to DANGE, then track 028° to KEGLE and hold.</p>
	<p><b>AS</b></p>	

<p>ATIS <b>134.575</b></p>	<p>CHICAGO APP CON <b>133.1 285.6</b></p>	<p>GARY TOWER ★ <b>125.6 (CTAF) 0</b></p>	<p>GND CON <b>121.9</b></p>
--------------------------------	---	---	---------------------------------



2100	HOSEN	DANGE	KEGLE	EBGIN
tr 306°		tr 028°		
RW30		WASTU 2000	2300	GP 3.00° TCH 57
4.3 NM		6.1 NM		
CATEGORY	A	B	C	D
RNP 0.13 DA	942-5/8		351 (400-5/8)	

**AUTHORIZATION REQUIRED**