

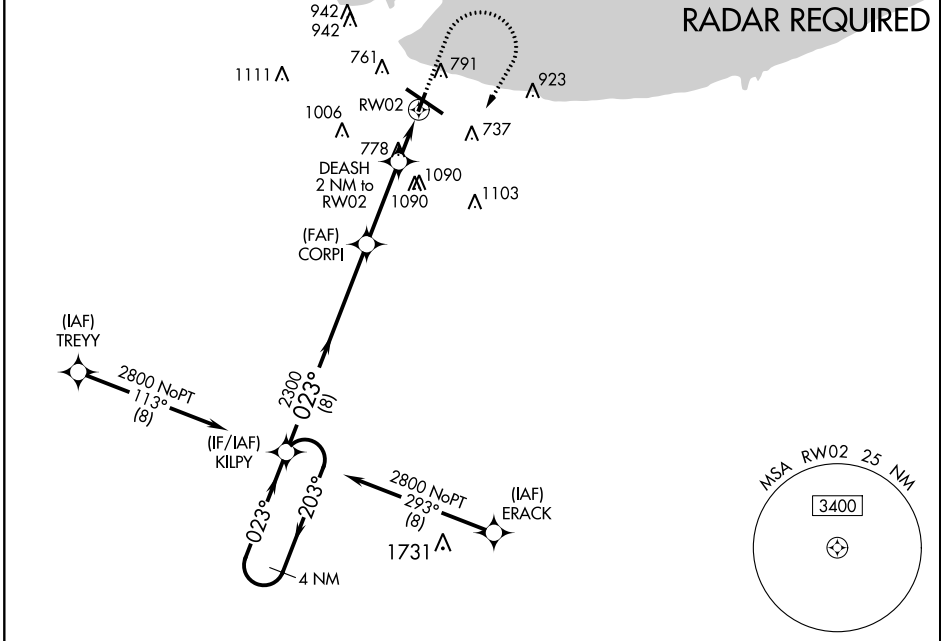
WAAS CH <b>69338</b> <b>W02A</b>	APP CRS <b>023°</b>	Rwy Idg TDZE Apt Elev	<b>3604</b> <b>591</b> <b>597</b>
--	------------------------	-----------------------------	---

**RNAV (GPS) RWY 2**  
GARY/CHICAGO INTL (GYY)

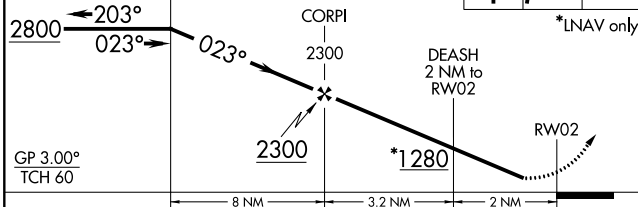
▼ For uncompensated Baro-VNAV systems, LNAV/VNAV NA below -1.6°C (4°F) or above 54°C (130°F). DME/DME RNP-0.3 NA. Helicopter visibility reduction below 3/4 SM NA. When local altimeter setting not received, use Chicago Midway Intl altimeter setting and increase LPV DA to 947 feet, LNAV/VNAV DA to 977 feet, all MDA 60 feet; increase LPV and LNAV/VNAV all Cats visibility 1/8 mile, and Circling Cat C and D visibility 1/4 mile. Baro-VNAV NA when using Chicago Midway Intl altimeter setting.

MISSED APPROACH: Climb to 2000 then climbing right turn to 2800 direct KILPY and hold.

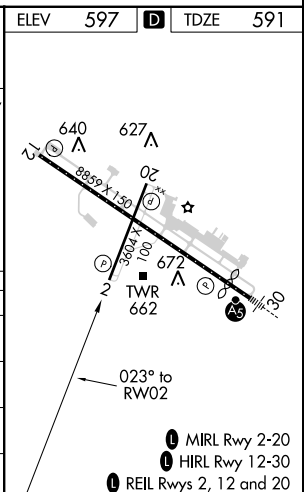
ATIS <b>134.575</b>	CHICAGO APP CON <b>133.1 285.6</b>	GARY TOWER ★ <b>125.6 (CTAF) 0</b>	GND CON <b>121.9</b>
------------------------	---------------------------------------	---------------------------------------	-------------------------



4 NM Holding Pattern KILPY  
VGSI and RNAV glidepath not coincident (VGSI Angle 3.00/TCH 60).  
ELEV 597 TDZE 591  
\*LNAV only



CATEGORY	A	B	C	D
LPV DA	901-1 310 (400-1)			
LNAV/VNAV DA	931-1 1/8 340 (400-1 1/8)			
LNAV MDA	1040-1 449 (500-1)		1040-1 3/8 449 (500-1 3/8)	
CIRCLING	1140-1 543 (600-1)	1180-1 583 (600-1)	1400-2 1/4 803 (900-2 1/4)	1420-2 3/4 823 (900-2 3/4)



EC-2, 25 MAR 2021 to 22 APR 2021

EC-2, 25 MAR 2021 to 22 APR 2021

- 1 MIRL Rwy 2-20
- 1 HIRL Rwy 12-30
- 1 REIL Rws 2, 12 and 20