

LOC/DME I-GYY 108.75 Chan 24 (Y)	APP CRS 306°	Rwy Idg 7959 TDZE 591 Apt Elev 597
---	------------------------	---

ILS or LOC RWY 30

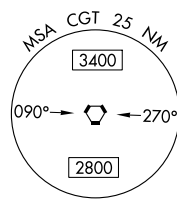
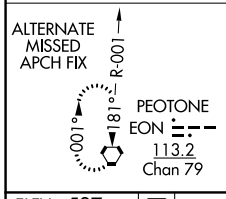
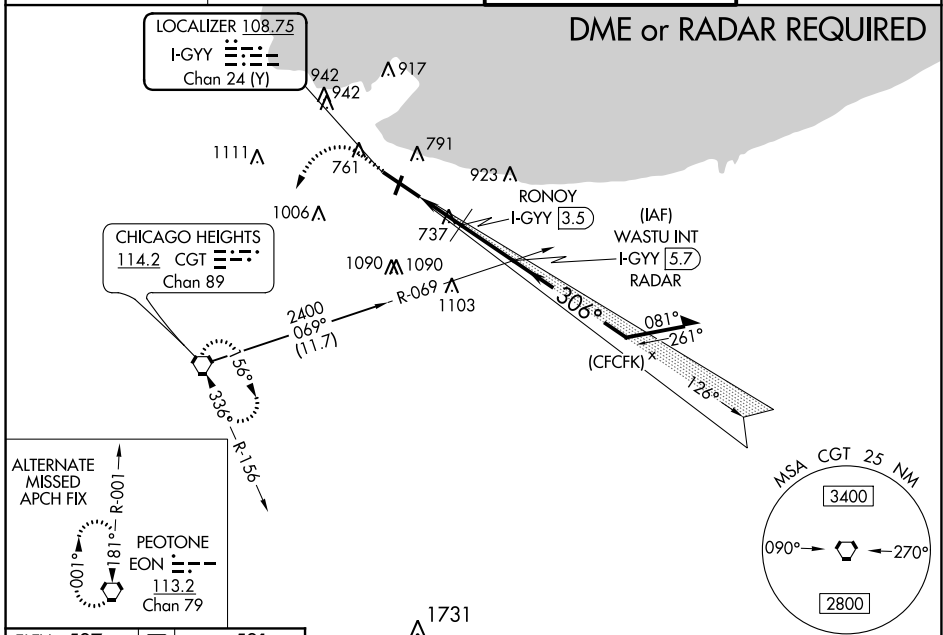
GARY/CHICAGO INTL (GYY)

⚠ When local altimeter setting not received, use Chicago Midway Intl altimeter setting and increase all DA 46 feet and all MDA 60 feet, increase S-LOC 30 Cat C/D visibility to 1½ miles, increase Circling Cat C/D and RONOY fix minimums Circling Cat C/D visibility ¼ mile. VDP NA with Chicago Midway Intl altimeter setting. **RVR 1800 authorized with use of FD or AP or HUD to DA, NA when using Chicago Midway Intl.

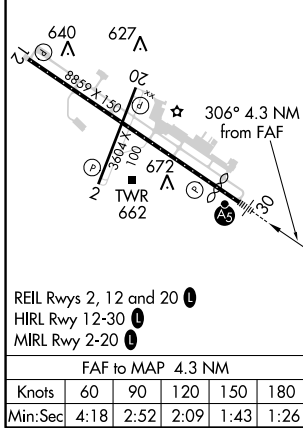
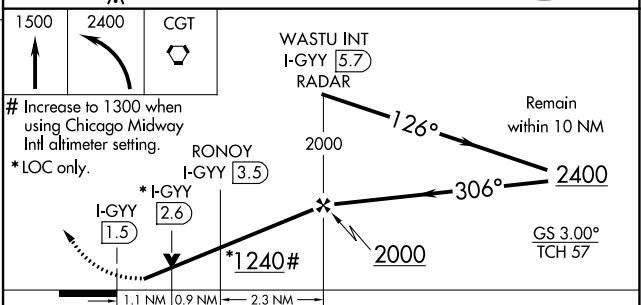


MISSED APPROACH: Climb to 1500 then climbing left turn to 2400 direct CGT VORTAC and hold.

ATIS 134.575	CHICAGO APP CON 133.1 285.6	GARY TOWER * 125.6 (CTAF) 0	GND CON 121.9
------------------------	---------------------------------------	---------------------------------------	-------------------------



ELEV 597	D	TDZE 591
----------	----------	----------



CATEGORY	A	B	C	D
S-ILS 30**	791/24 200 (200-½)			
S-LOC 30	1240/24	649 (700-½)	1240-1⅓	649 (700-1⅓)
C CIRCLING	1240-1	643 (700-1)	1400-2¼	1420-2¾
			803 (900-2¼)	823 (900-2¾)
RONOY FIX MINIMUMS				
S-LOC 30	1000/24	409 (500-½)	1000/40	409 (500-¾)
C CIRCLING	1140-1	1180-1	1400-2¼	1420-2¾
	543 (600-1)	583 (600-1)	803 (900-2¼)	823 (900-2¾)