

LOC I-PWA 110.15	APP CRS 175°	Rwy Idg 6844
		TDZE 1291
		Apt Elev 1300

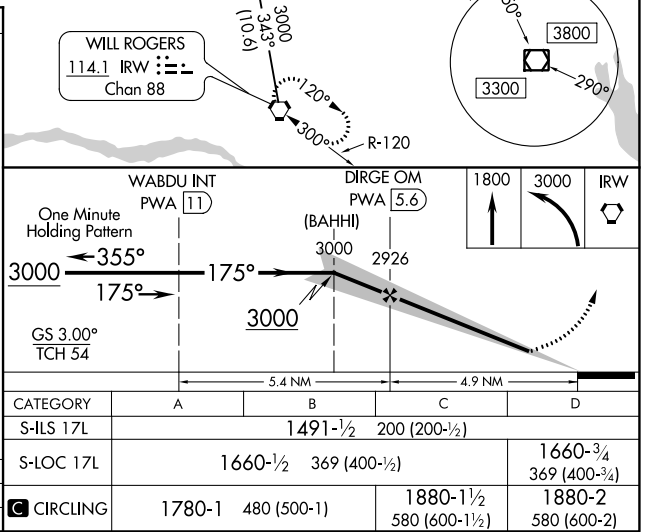
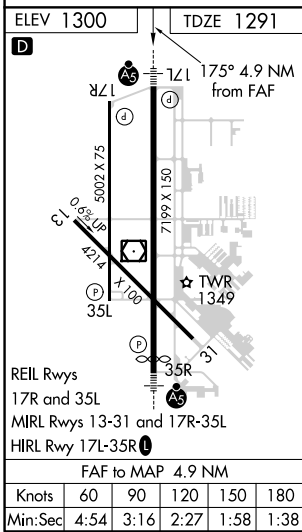
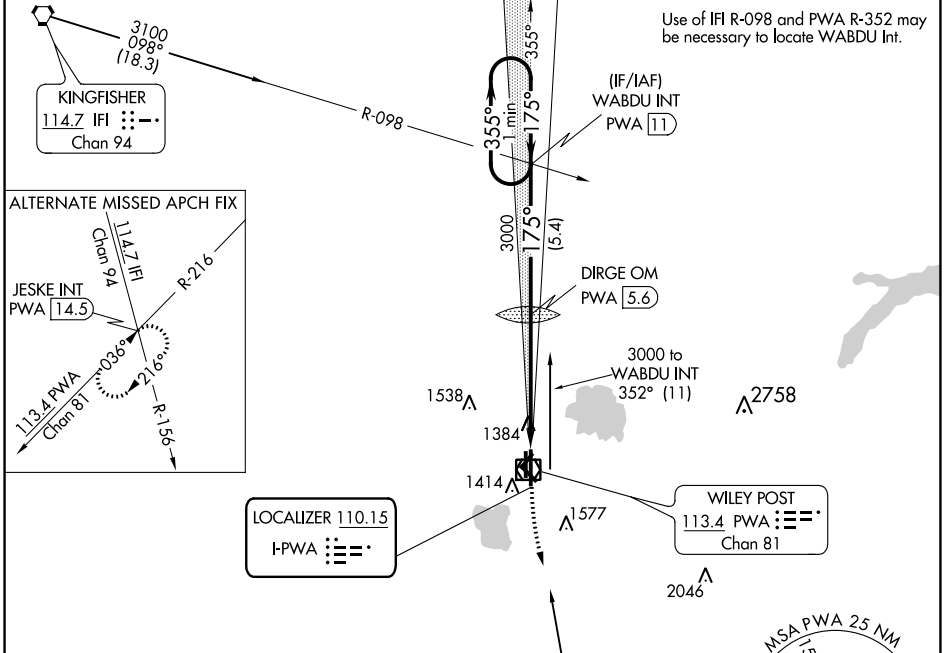
ILS or LOC RWY 17L

WILEY POST (PWA)

⚠ When local altimeter setting not received, use Will Rogers World altimeter setting and increase all DA 21 feet and all MDA 40 feet and increase S-LOC 17L Cat C visibility 1/4 mile.

MALSR **⚠** MISSED APPROACH: Climb to 1800 then climbing left turn to 3000 direct IRW VORTAC and hold.

ATIS 128.725	OKE CITY APP CON 124.6 266.8	WILEY POST TOWER ★ 126.9 (CTAF) 306.9	GND CON 121.7	UNICOM 122.95
------------------------	--	---	-------------------------	-------------------------



SC-1, 25 MAR 2021 to 22 APR 2021

SC-1, 25 MAR 2021 to 22 APR 2021