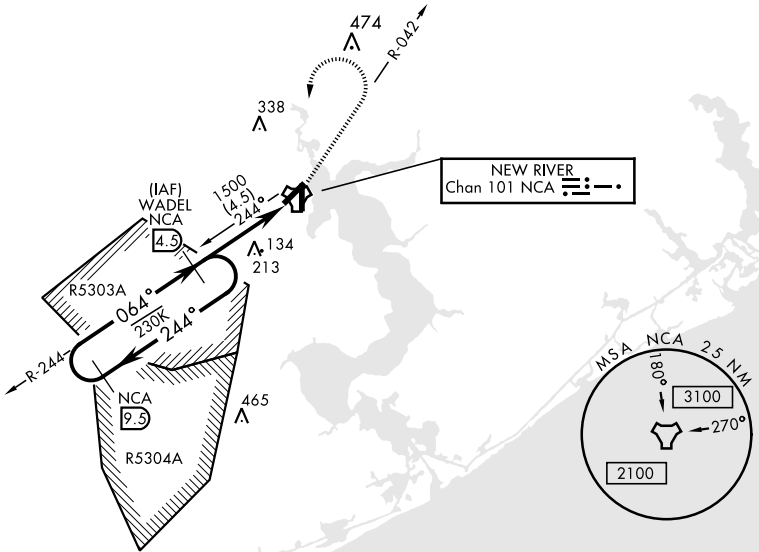


# TACAN RWY 5

TACAN NCA Chan 101	APCH CRS 064°	Rwy Idg 5127 TDZE 26 Arprt Elev 26	AL-732 [USN] NEW RIVER MCAS (MC CUTCHEON FLD)(KNCA)			
ATIS ★ 288.325		CHERRY POINT APP CON 119.35 377.175	NEW RIVER TOWER★ 120.00★ 360.2	GND CON 121.8 254.275	CLNC DEL 269.25	ASR/PAR

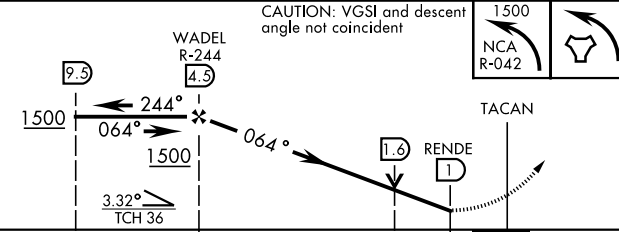
MISSED APPROACH: Climbing left turn to 1500 via NCA R-042. Then left turn direct NCA TACAN, then via NCA R-244 direct WADEL and hold.



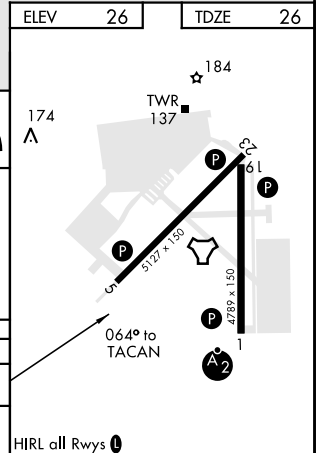
## RADAR REQUIRED

EMERG SAFE ALT 100 NM 3400

CAUTION: VGS1 and descent angle not coincident



CATEGORY	A	B	C	D
S-5	440-1	414 (500-1)	440-1½ 414 (500-1½)	
CIRCLING	500-1	474 (500-1)	500-1½ 474 (500-1½)	580-2 554 (600-2)



# TACAN RWY 5

SE-2, 25 MAR 2021 to 22 APR 2021

SE-2, 25 MAR 2021 to 22 APR 2021