

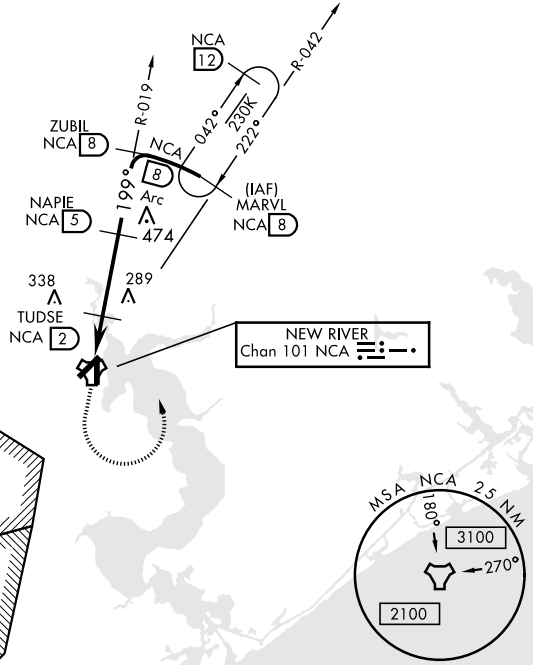
TACAN RWY 19

TACAN NCA Chan 101	APCH CRS 199°	Rwy ldg TDZE 23 Arprt Elev 26
---------------------------	----------------------	--

AL-732 [USN] NEW RIVER MCAS (MC CUTCHEON FLD)(KNCA)

<p>▽ MISSED APPROACH: Climbing left turn to 1500 intercept NCA R-042 direct MARVL (R-042/8 DME) and hold.</p>					
ATIS ★ 288.325	CHERRY POINT APP CON 119.35 377.175	NEW RIVER TOWER★ 120.00★ 360.2	GND CON 121.8 254.275	CLNC DEL 269.25	ASR/PAR

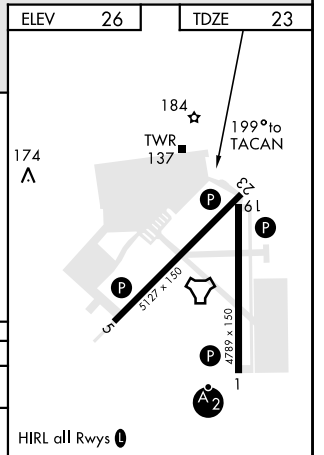
CAUTION: Inmed seg len 3 NM.



RADAR REQUIRED

EMERG SAFE ALT 100 NM 3400

1500 NCA R-042	MARVL NCA B	NAPIE 5	ZUBIL R-019 8	MARVL R-042 8
TACAN	POSTY 5	TUDSE 2.1	199°	1500
1.6 NM	1.6 NM	2.9 NM	2.97°	1500
1 NM	1.6 NM	2.9 NM	Arc	1500
CATEGORY	A	B	C	D
S-19	440-1 417 (500-1)	440-1 417 (500-1)	440-1 1/2 417 (500-1 1/2)	580-2 554 (600-2)
CIRCLING	500-1 474 (500-1)	500-1 474 (500-1)	500-1 1/2 474 (500-1 1/2)	580-2 554 (600-2)



TACAN RWY 19

SE-2, 25 MAR 2021 to 22 APR 2021

SE-2, 25 MAR 2021 to 22 APR 2021