

JACKSONVILLE, NORTH CAROLINA

RNAV (GPS) RWY 1

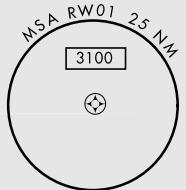
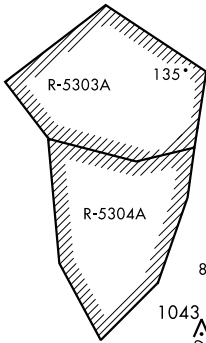
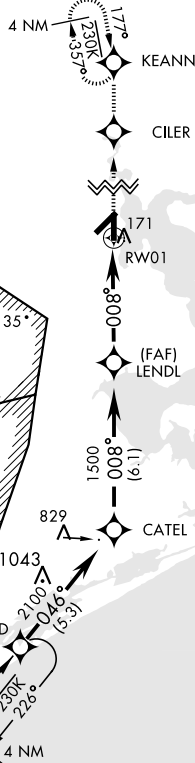
APCH CRS	Rwy ldg	4789
008°	THRE	24
	Arprt Elev	26

AL-732 [USN] NEW RIVER MCAS (MC CUTCHEON FLD)(KNCA)

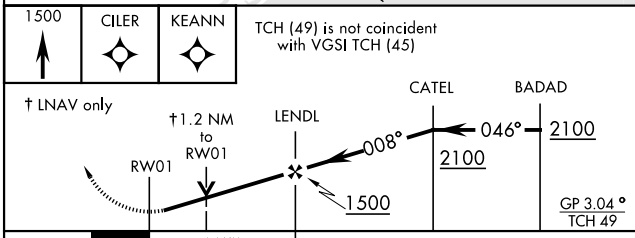
<p>▼ * When ALS inop, increase vis CAT AB to 1/8 mile, CD to 1 mile. ** When ALS inop, increase vis CAT AB to 1 mile, CAT CD to 1 1/2 miles.</p>	<p>SALSF</p>	<p>MISSED APPROACH: Climb to 1500 direct CILER, 008° track to KEANN and hold.</p>
---	--------------	---

<p>ATIS ★</p> <p>288.325</p>	<p>CHERRY POINT APP CON</p> <p>119.35 377.175</p>	<p>NEW RIVER TOWER★</p> <p>120.00★ 360.2</p>	<p>GND CON</p> <p>121.8 254.275</p>	<p>CLNC DEL</p> <p>269.25</p>	<p>ASR/PAR</p>
-------------------------------------	--	---	--	--------------------------------------	----------------

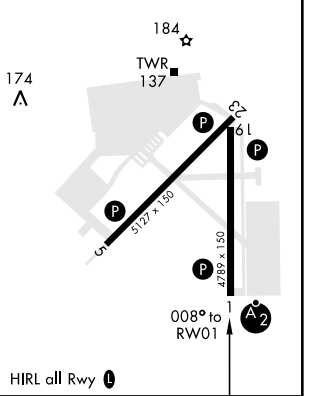
Baro VNAV NA below -15°C (5°F) and above 54°C (130°F).
 DME/DME RNP-0.3 NA.



EMERG SAFE ALT 100 NM 3400



ELEV	26	THRE	24
------	----	------	----



CATEGORY	A	B	C	D
LNAV/VNAV DA *	305-3/4 281 (300-3/4)	316-3/4 292 (300-3/4)	324-3/4 300 (300-3/4)	335-3/4 311 (400-3/4)
LNAV MDA **	440-3/4 416 (500-3/4)	440-1 416 (500-1)	500-1 1/2 474 (500-1 1/2)	580-2 554 (600-2)
CIRCLING	500-1 474 (500-1)	500-1 1/2 474 (500-1 1/2)	580-2 554 (600-2)	

HIRL all Rwy

JACKSONVILLE, NORTH CAROLINA

34° 43' N-77° 26' W

NEW RIVER MCAS (MC CUTCHEON FLD)(KNCA)

Amdt 2 22JUN17

RNAV (GPS) RWY 1

SE-2, 25 MAR 2021 to 22 APR 2021

SE-2, 25 MAR 2021 to 22 APR 2021