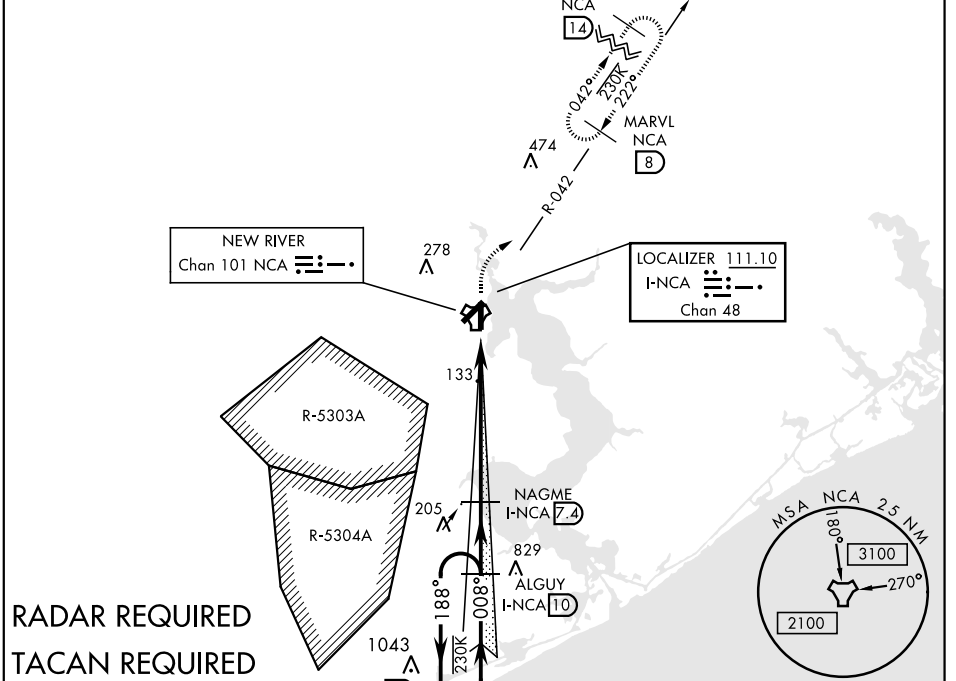


# ILS or LOC/DME RWY 1

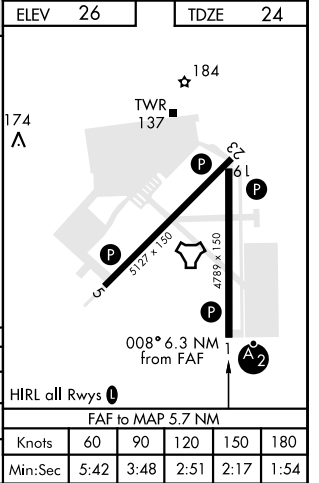
LOC I-NCA <b>111.10</b> Chan <b>48</b>	APCH CRS <b>008°</b>	Rwy Idg TDZE <b>24</b> Arprt Elev <b>26</b>	4789	AL-732 [USN]	NEW RIVER MCAS (MC CUTCHEON FLD) (KNCA)
▼ *When ALS inop, increase CAT ABCD vis to ¾ mile. **When ALS inop, increase CAT ABCD vis to 1 mile.			SALS <b>A2</b>	MISSED APPROACH: Climb to 500, then climbing right turn to 3000, intercept NCA R-042 to MARVL and hold, continue climb-in-hold to 3000.	

ATIS ★ <b>288.325</b>	CHERRY POINT APP CON <b>119.35 377.175</b>	NEW RIVER TOWER ★ <b>120.00* 360.2</b>	GND CON <b>121.8 254.275</b>	CLNC DEL <b>269.25</b>	ASR/PAR
--------------------------	---	---	---------------------------------	---------------------------	---------



**RADAR REQUIRED**  
**TACAN REQUIRED**  
EMERG SAFE ALT 100 NM 3400

ELEV 26	TDZE 24			
500	3000	MARVL R-042		
I-NCA DME    AMRUW I-NCA (1.6)    † LOC only    I-NCA (2.2) †    008°    2100    188°    008°    4 NM holding pattern    GS 3.00°    TCH 49				
CATEGORY	A	B	C	D
S-ILS 1 *	224-¾		200	(200-¾)
S-LOC 1 **	400-¾		376	(400-¾)
CIRCLING	500-1	474 (500-1)	500-1½ 474 (500-1½)	580-2 554 (600-2)



# ILS or LOC/DME RWY 1

SE-2, 25 MAR 2021 to 22 APR 2021

SE-2, 25 MAR 2021 to 22 APR 2021