

WAAS CH <b>86734</b> <b>W09A</b>	APP CRS <b>093°</b>	Rwy Idg TDZE <b>797</b> Apt Elev <b>808</b>	<b>5648</b>
--	------------------------	---	-------------

# RNAV (GPS) RWY 9

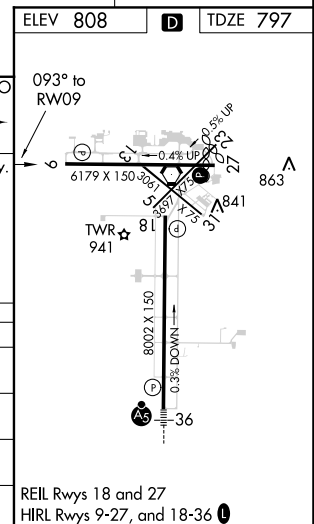
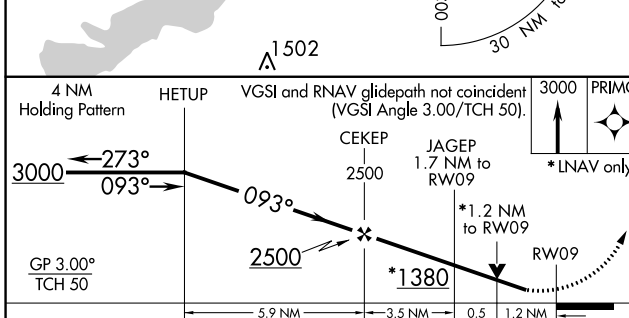
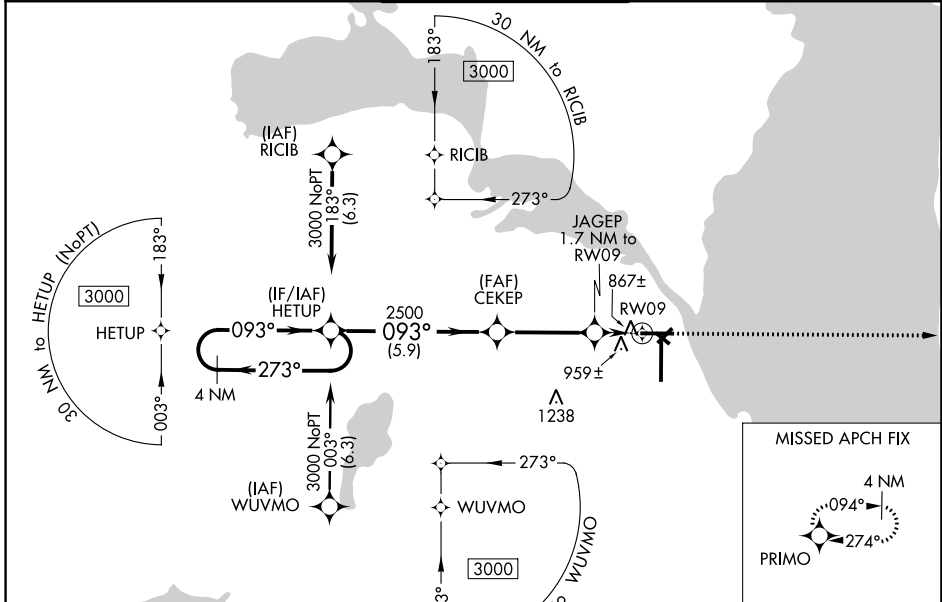
WITTMAN RGNL (OSH)

RNP APCH

**▼** VDP and Baro-VNAV NA with using Fond Du Lac County altimeter setting. When local altimeter setting not received, use Fond Du Lac altimeter setting and increase all DA 31 feet and all MDA 40 feet; increase LPV and LNAV/VNAV all Cats visibility and LNAV Cats C/D visibility 1/8 mile, increase Circling Cat D visibility 1/4 mile. Circling Rwy 5, 23, 31 NA at night. Rwy 9 helicopter visibility reduction below 1/4 SM NA. For uncompensated Baro-VNAV systems, LNAV/VNAV NA below -20° C or above 54° C.

**MISSED APPROACH:**  
Climb to 3000 direct PRIMO and hold.

ATIS <b>125.9</b>	MILWAUKEE APP CON <b>127.0 263.075</b>	OSHKOSH TOWER ★ <b>118.5(CTAF) 290.9</b>	GND CON <b>132.3</b>	UNICOM <b>122.95</b>
----------------------	---	---	-------------------------	-------------------------



CATEGORY	A	B	C	D
LPV DA		1055-3/4	258 (300-3/4)	
LNAV/VNAV DA		1140-1 1/8	343 (400-1 1/8)	
LNAV MDA	1220-1	423 (500-1)	1220-1 1/4	423 (500-1 1/4)
CIRCLING	1280-1 472 (500-1)	1300-1 492 (500-1)	1360-1 1/2 552 (600-1 1/2)	1440-2 632 (700-2)

EC-3, 25 MAR 2021 to 22 APR 2021

EC-3, 25 MAR 2021 to 22 APR 2021