

WAAS CH 65602 W36A	APP CRS 004°	Rwy Idg 8002
		TDZE 808
		Apt Elev 808

RNAV (GPS) RWY 36

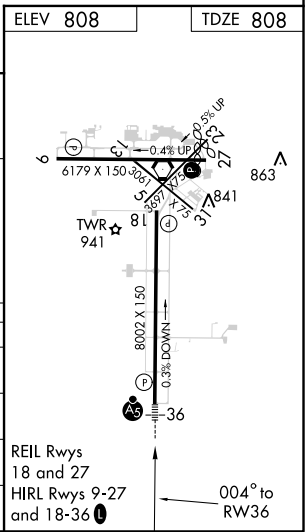
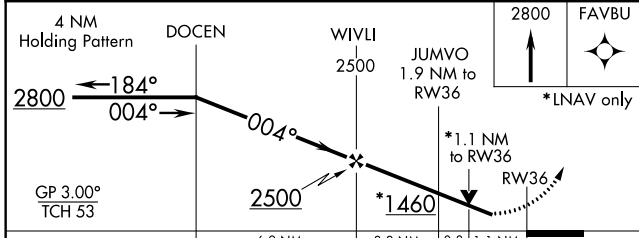
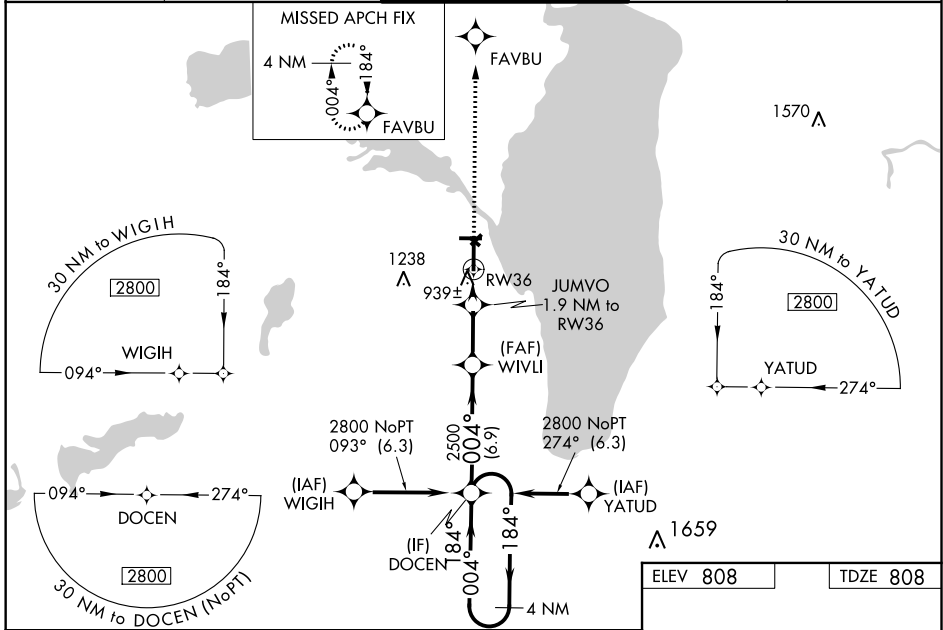
WITTMAN RGNL (OSH)

▼ For uncompensated Baro-VNAV systems, LNAV/VNAV NA below -20°C (-4°F) or above 54°C (130°F). DME/DME RNP-0.3 NA. When local altimeter setting not received, use Fond Du Lac altimeter setting and increase all DA 31 feet and all MDA 40 feet; increase LNAV/VNAV all Cats visibility to RVR 5600, increase LNAV Cat C/D visibility to RVR 4000, increase Circling Cat D visibility 1/4 mile. For inop MALSRS when using Fond Du Lac altimeter setting, increase LNAV/VNAV all Cats visibility to 1 1/2 mile and LNAV Cats C/D to RVR 6000. Baro-VNAV and VDP NA when using Fond Du Lac altimeter setting. Circling to Rwy 5, 23 and 31 NA at night. # RVR 1800 authorized with use of FD or AP or HUD to DA, NA when using Fond Du Lac altimeter setting.



MALSRS MISSED APPROACH:
Climb to 2800 direct FAVBU and hold.

ATIS 125.9	MILWAUKEE APP CON 127.0 263,075	OSHKOSH TOWER ★ 118.5 (CTAF) 290.9	GND CON 132.3	UNICOM 122.95
----------------------	---	--	-------------------------	-------------------------



CATEGORY	A	B	C	D
LPV DA#		1008/24	200 (200-1/2)	
LNAV/VNAV DA		1247/50	439 (500-1)	
LNAV MDA	1200/24	392 (400-1/2)	1200/35	392 (400-5/8)
CIRCLING	1280-1 472 (500-1)	1300-1 492 (500-1)	1360-1 1/2 552 (600-1/2)	1440-2 632 (700-2)

EC-3, 25 MAR 2021 to 22 APR 2021

EC-3, 25 MAR 2021 to 22 APR 2021