

VOR/DME LOZ 116.1 Chan 108	APP CRS 025°	Rwy Idg 5000 TDZE 1212 Apt Elev 1212
--	------------------------	---

VOR RWY 6

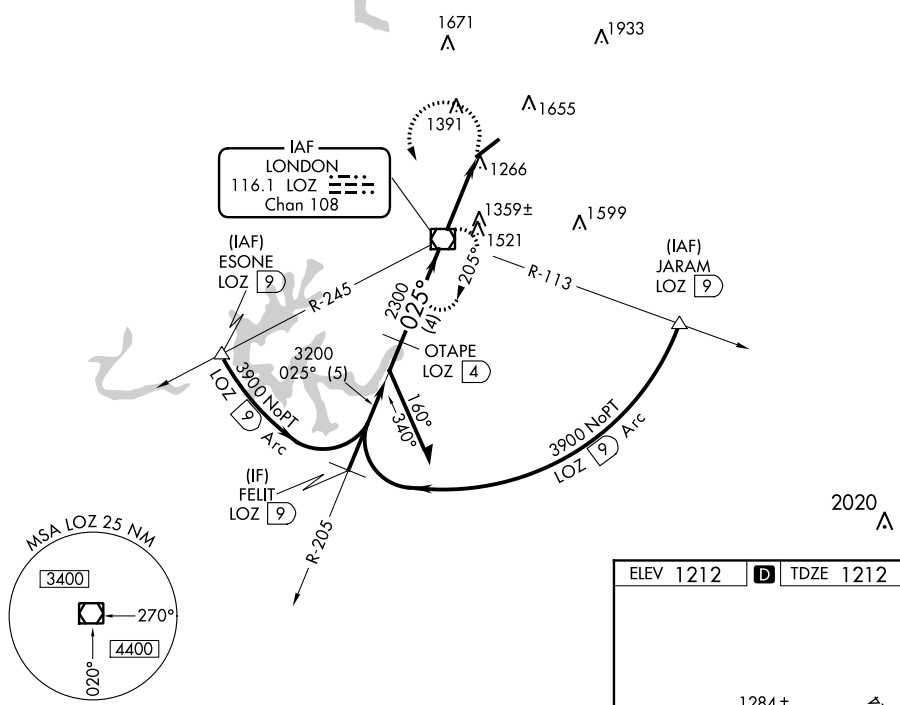
LONDON-CORBIN AIRPORT-MAGEE FIELD (LOZ)

⚠ When local altimeter setting not received, use Somerset altimeter setting and increase all MDAs 100 feet and increase S-6 Cat C/D and Circling Cat C/D visibility ¼ mile. Night landing: Rwy 6 NA.

MISSED APPROACH: Climbing left turn to 4000 direct LOZ VOR/DME and hold, continue climb-in-hold to 4000.

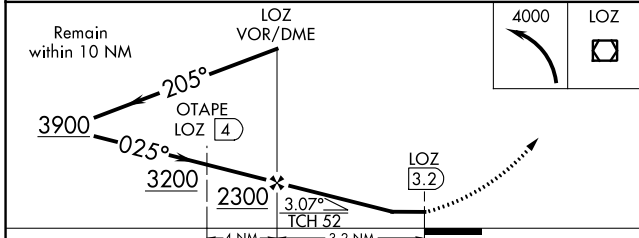
ASOS 119.075	INDIANAPOLIS CENTER 124.625 371.925	UNICOM 123.0 (CTAF) 0
------------------------	---	---------------------------------

DME REQUIRED



SE-1, 25 MAR 2021 to 22 APR 2021

SE-1, 25 MAR 2021 to 22 APR 2021



ELEV 1212	D TDZE 1212
025° 3.2 NM from FAF MIRL Rwy 6-24 0 REIL Rws 6 and 24 0 FAF to MAP 3.2 NM	
Knots	60 90 120 150 180
Min:Seq	3:12 2:08 1:36 1:17 1:04

CATEGORY	A	B	C	D
S-6	1620-1 408 (500-1)		1620-1¼ 408 (500-1¼)	
CIRCLING	1780-1 568 (600-1)		2040-2½ 828 (900-2½)	2040-2¾ 828 (900-2¾)

VOR RWY 6