

WAAS CH <b>78108</b> W24A	APP CRS <b>237°</b>	Rwy Idg <b>5200</b> TDZE <b>1201</b> Apt Elev <b>1212</b>
---------------------------------	------------------------	---

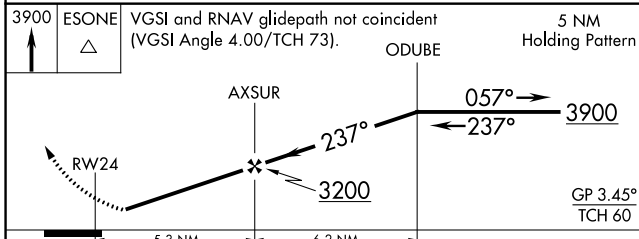
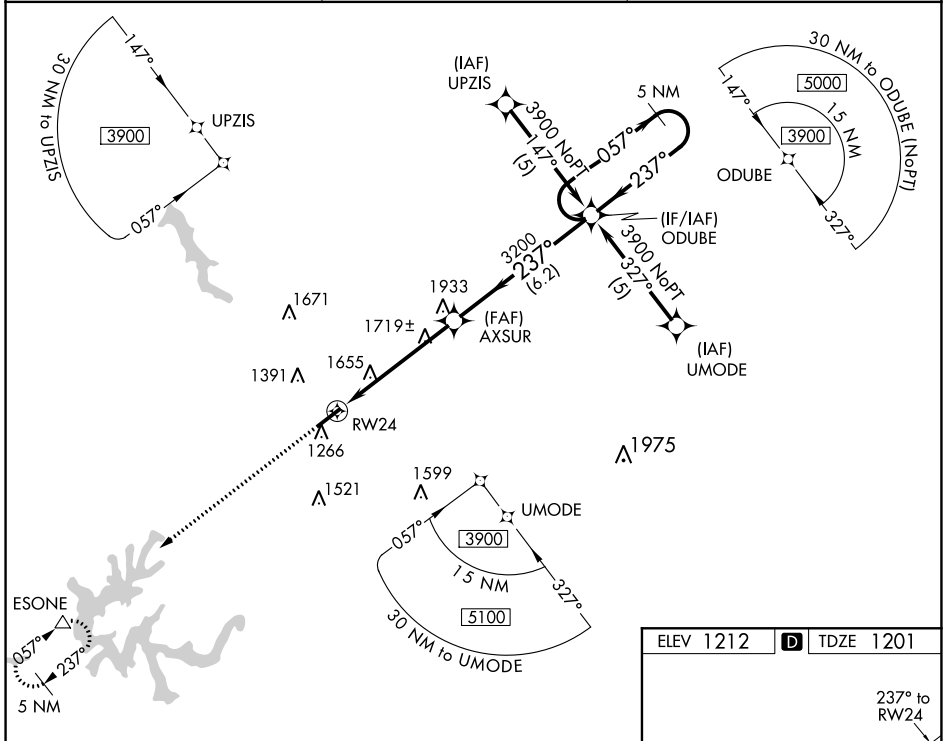
# RNAV (GPS) RWY 24

LONDON-CORBIN AIRPORT-MAGEE FIELD (LOZ)

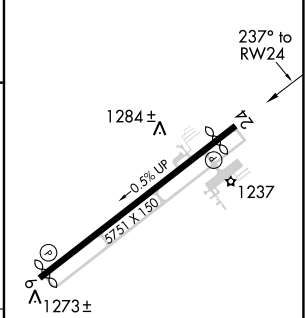
**▽** DME/DME RNP-0.3 NA. Visibility reduction by helicopters NA.  
**▲** When local altimeter setting not received, use Somerset altimeter setting and increase all DA/MDAs 100 feet, increase LPV all Cats, LNAV Cats C/D, and circling Cats C/D visibilities ¼ mile.

MISSED APPROACH: Climb to 3900 direct ESONE and hold.

ASOS <b>119.075</b>	INDIANAPOLIS CENTER <b>124.625 371.925</b>	UNICOM <b>123.0 (CTAF)</b> <b>0</b>
------------------------	---	--



ELEV 1212	<b>D</b> TDZE 1201
-----------	--------------------



CATEGORY	A	B	C	D
LPV DA	1510-1 309 (300-1)			NA
LNAV MDA	1980-1 779 (800-1)	1980-1¼ 779 (800-1¼)	1980-2¼ 779 (800-2¼)	1980-2½ 779 (800-2½)
CIRCLING	1980-1 768 (800-1)	1980-1¼ 768 (800-1¼)	2040-2½ 828 (900-2½)	2040-2¾ 828 (900-2¾)

MIRL Rwy 6-24 **0**  
 REIL Rws 6 and 24 **0**

SE-1, 25 MAR 2021 to 22 APR 2021

SE-1, 25 MAR 2021 to 22 APR 2021