

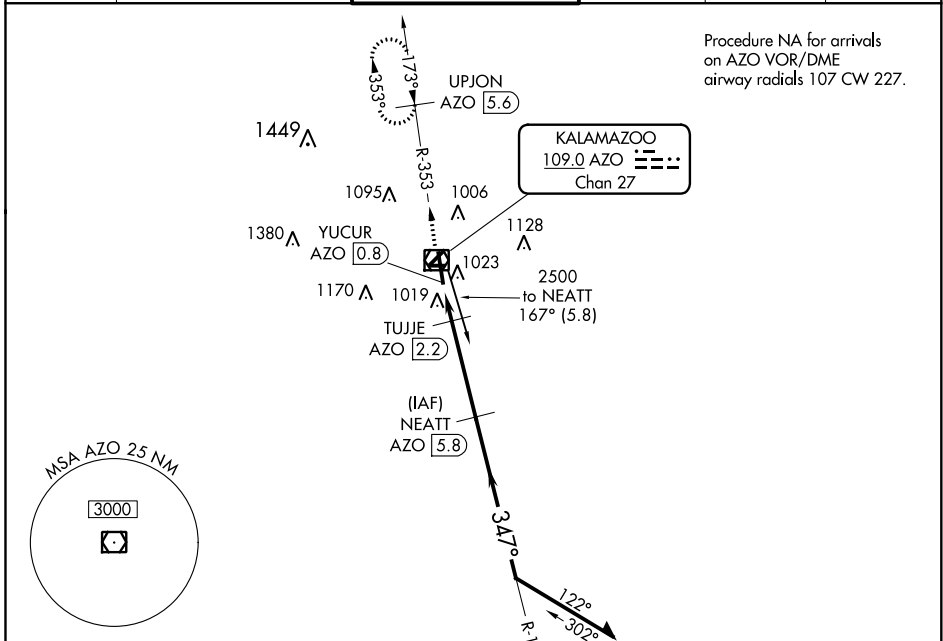
VOR/DME AZO 109.0 Chan 27	APP CRS 347°	Rwy Idg 6502 TDZE 868 Apt Elev 874
--	------------------------	---

VOR RWY 35

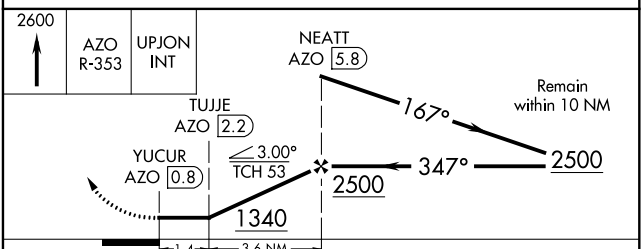
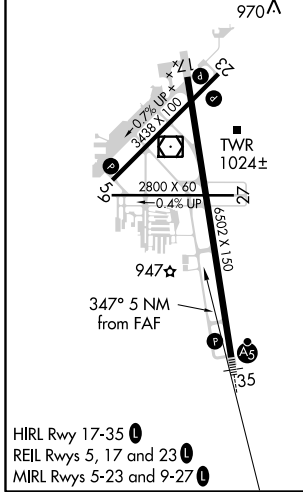
KALAMAZOO/BATTLE CREEK INTL (AZO)

ASR Circling to Rwy 5, 9, 23, 27 NA at night. DME required. For inoperative MALSR, increase S-35 Cat C and D visibility to RVR 6000.	MALSR 	MISSED APPROACH: Climb to 2600 on AZO VOR/DME R-353 to UPJON/AZO 5.6 DME and hold.
---	-----------	--

ATIS 127.25	GREAT LAKES APP CON * 121.2 239.25	KALAMAZOO TOWER * 118.3 (CTAF) 257.875	GND CON 121.9	CLNC DEL 121.75	UNICOM 122.95
-----------------------	--	--	-------------------------	---------------------------	-------------------------



ELEV 874	D	TDZE 868
----------	----------	----------



CATEGORY	A	B	C	D
S-35	1280/24	412 (500-½)	1280/40	412 (500-¾)
C CIRCLING	1380-1	506 (600-1)	1480-1¾ 606 (700-1¾)	1480-2 606 (700-2)

EC-1, 25 MAR 2021 to 22 APR 2021

EC-1, 25 MAR 2021 to 22 APR 2021