

VOR/DME	FAY	APP CRS	Rwy Idg	<b>6508</b>
<b>108.8</b>		<b>057°</b>	TDZE	<b>189</b>
Chan <b>25</b>			Apt Elev	<b>189</b>

# VOR RWY 4

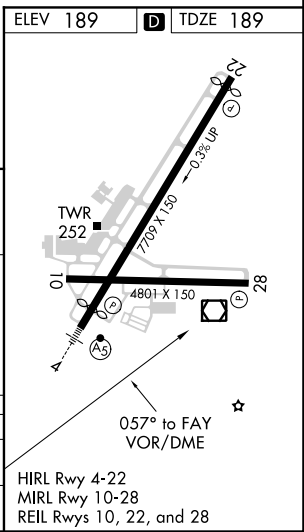
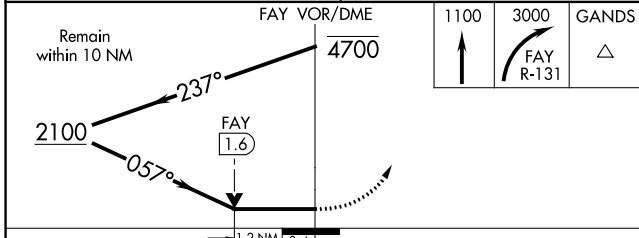
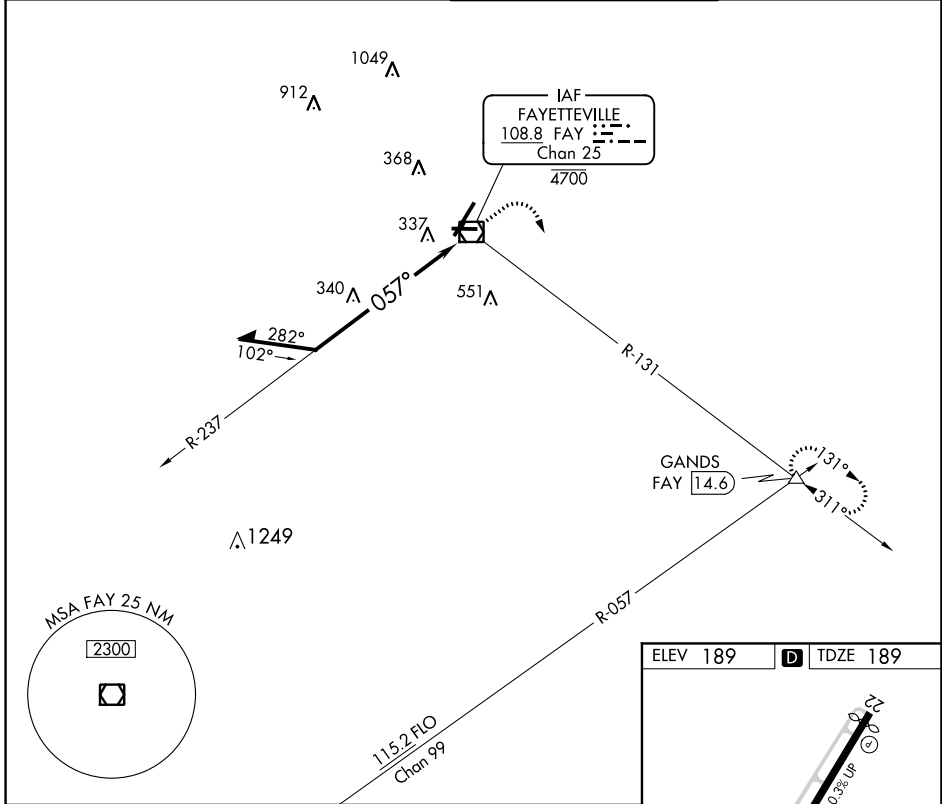
FAYETTEVILLE RGNL/GRANNIS FIELD (FAY)

**▼** For inop ALS, increase S-4 Cat A/B visibility to RVR 5500 and Cat C/D to 1 $\frac{3}{8}$  SM.



**MISSED APPROACH:** Climb to 1100 then climbing right turn to 3000 on FAY R-131 to GANDS INT/FAY 14.6 DME and hold.

ATIS <b>121.25</b>	FAYETTEVILLE APP CON <b>133.0 290.25</b>	FAYETTEVILLE TOWER <b>118.3 269.2</b>	GND CON <b>121.7 348.6</b>
-----------------------	---	--	-------------------------------



CATEGORY	A	B	C	D
S-4	640/40	451 (500- $\frac{3}{4}$ )	640/45	640/50
			451 (500- $\frac{1}{2}$ )	451 (500-1)
<b>■</b> CIRCLING	640-1	660-1	860-2	860-2 $\frac{1}{4}$
	451 (500-1)	471 (500-1)	671 (700-2)	671 (700-2 $\frac{1}{4}$ )

HIRL Rwy 4-22  
MIRL Rwy 10-28  
REIL Rwy 10, 22, and 28

SE-2, 25 MAR 2021 to 22 APR 2021

SE-2, 25 MAR 2021 to 22 APR 2021