

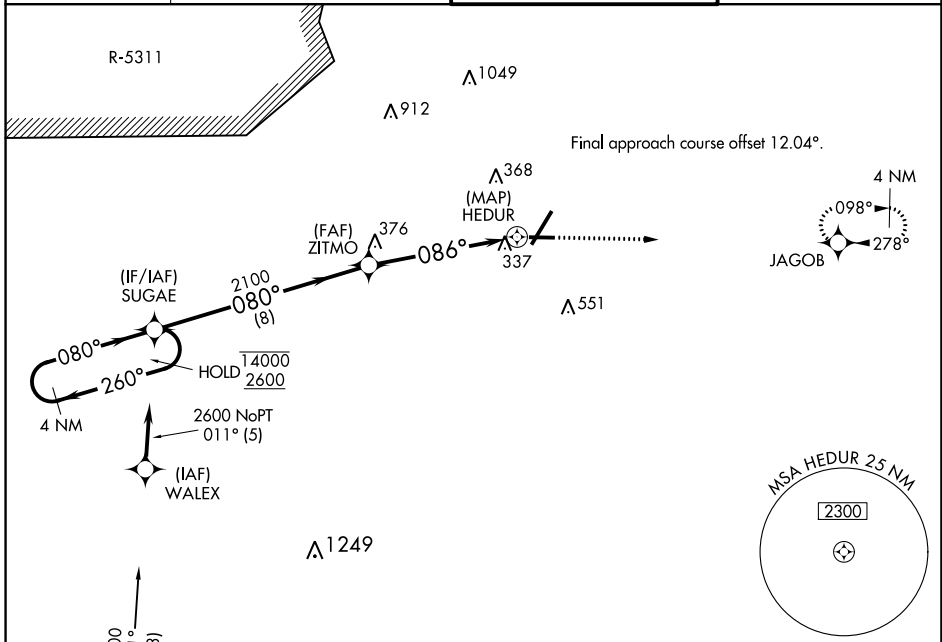
APP CRS	Rwy Idg	<b>4801</b>
<b>086°</b>	TDZE	<b>188</b>
	Apt Elev	<b>189</b>

# RNAV (GPS) RWY 10

FAYETTEVILLE RGNL/GRANNIS FIELD (FAY)

RNP APCH.	MISSED APPROACH: Climb to 2600 direct JAGOB and hold.
Rwy 10 helicopter visibility reduction below 3/4 SM NA.	

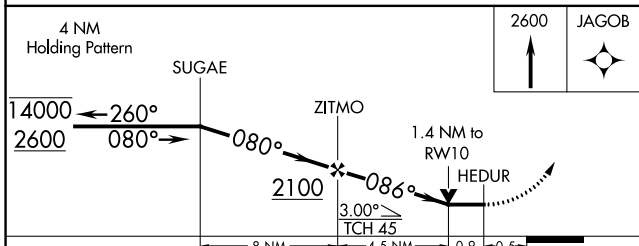
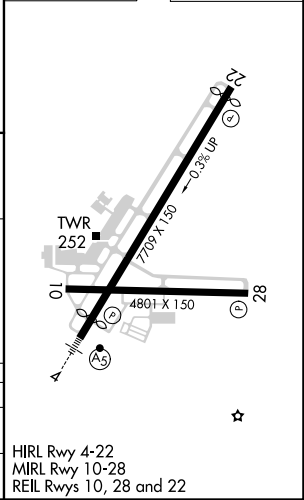
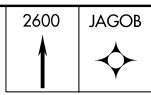
ATIS <b>121.25</b>	FAYETTEVILLE APP CON <b>133.0 290.25</b>	FAYETTEVILLE TOWER <b>118.3 269.2</b>	GND CON <b>121.7 348.6</b>
-----------------------	---	--	-------------------------------



SE-2, 25 MAR 2021 to 22 APR 2021

SE-2, 25 MAR 2021 to 22 APR 2021

ELEV 189	<b>D</b>	TDZE 188
----------	----------	----------



CATEGORY	A	B	C	D
LNVA MDA	660-1	472 (500-1)	660-1 3/8	472 (500-1 3/8)
CIRCLING	660-1	471 (500-1)	860-2 671 (700-2)	860-2 1/4 671 (700-2 1/4)

HIRL Rwy 4-22  
MIRL Rwy 10-28  
REIL Rwy 10, 28 and 22