

WAAS CH <b>63002</b> <b>W22A</b>	APP CRS <b>219°</b>	Rwy Idg <b>6153</b> TDZE <b>17</b> Apt Elev <b>18</b>
--	------------------------	---

# RNAV (GPS) RWY 22

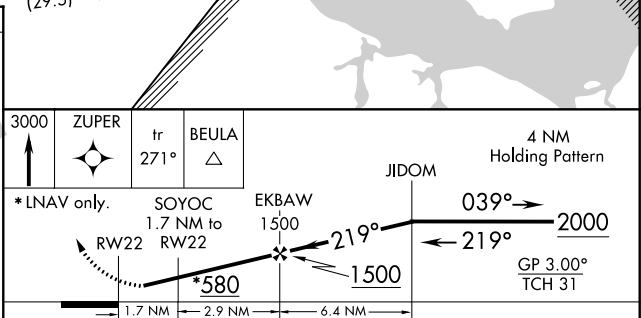
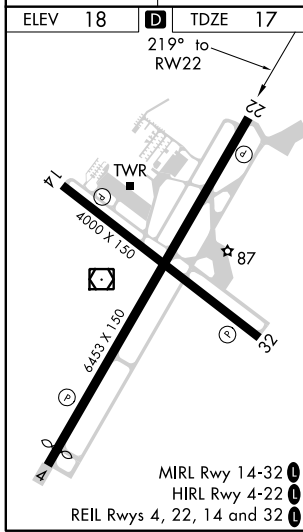
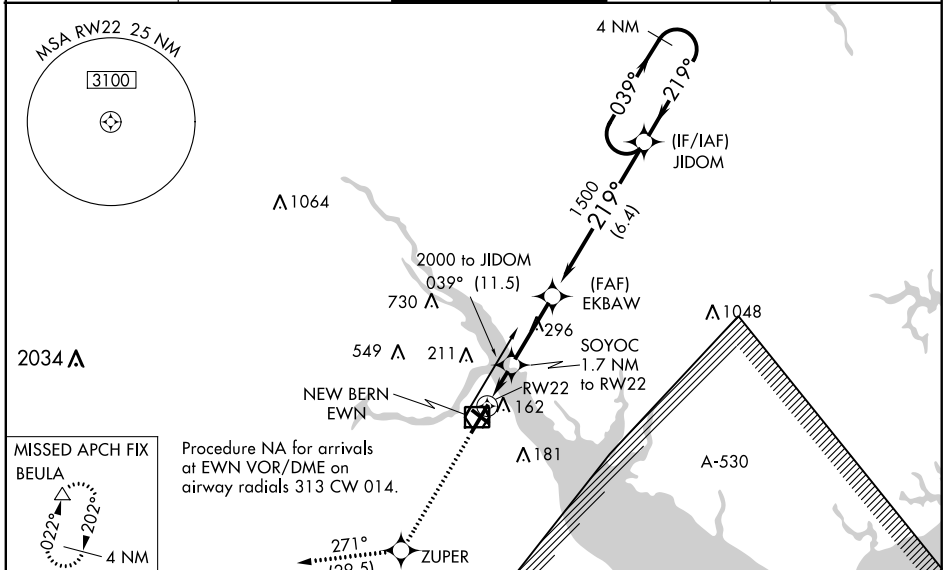
COASTAL CAROLINA RGNL (EWN)

RNP APCH.

▼ Rwy 14, 32 helicopter visibility reduction below 1 SM NA. Rwy 22 helicopter visibility reduction below ¾ SM NA. Circling Rwy 14, 32 NA at night. Baro-VNAV NA when using Cherry Point altimeter setting. For uncompensated Baro-VNAV systems, LNAV/VNAV NA below -15°C (5°F) or above 54°C (130°F). When local altimeter setting not received, use Cherry Point altimeter setting; increase all DA 32 feet and all MDA 40 feet. Increase LPV and LNAV/VNAV visibility ½ SM, and Circling Cat C/D visibility ¼ SM.

MISSED APPROACH: Climb to 3000 direct ZUPER and on track 271° to BEULA and hold.

ASOS <b>118.525</b>	CHERRY POINT APP CON <b>119.35 374.9</b>	NEW BERN TOWER* <b>124.25 (CTAF) 0</b>	CLNC DEL <b>121.7</b>	GND CON <b>121.7</b>
------------------------	---	---	--------------------------	-------------------------



CATEGORY	A	B	C	D
LPV DA		269-7/8	252 (300-7/8)	
LNAV/VNAV DA		376-1 1/4	359 (400-1 1/4)	
LNAV MDA	480-1	463 (500-1)	480-1 3/8	463 (500-1 3/8)
CIRCLING	480-1 462 (500-1)	520-1 502 (600-1)	600-1 1/2 582 (600-1 1/2)	860-2 3/4 842 (900-2 3/4)

SE-2, 25 MAR 2021 to 22 APR 2021

SE-2, 25 MAR 2021 to 22 APR 2021