

APP CRS	Rwy ldg	10000
308°	TDZE	63
	Apt Elev	75

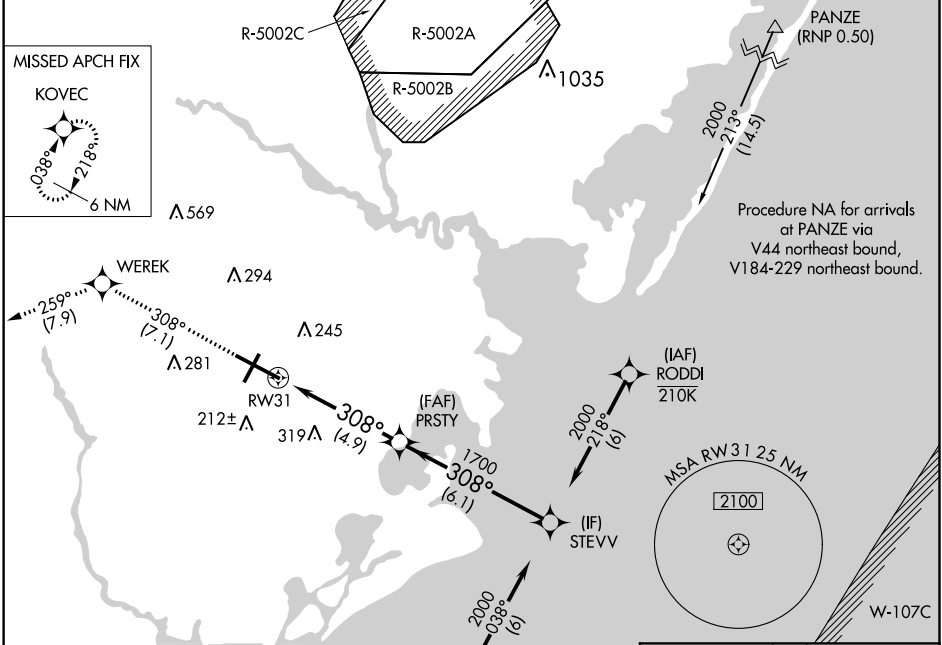
RNAV (RNP) Z RWY 31

ATLANTIC CITY INTL (ACY)

ASR GPS Required. Procedure NA at night.
For uncompensated Baro-VNAV systems, procedure NA below -13°C (8°F) or above 54°C (130°F).

MISSED APPROACH: Climb to 2000 on track 308° to WEREK on track 259° to KOVEK and hold.

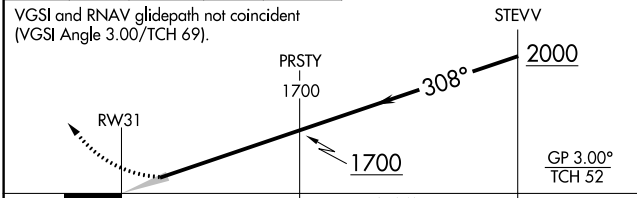
ATIS	ATLANTIC CITY APP CON	ATLANTIC CITY TOWER	GND CON	CLNC DEL
125.725 316.15	124.6 327.125	120.3 239.0	121.9 284.6	127.85 353.775



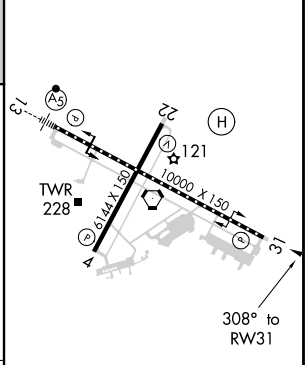
Procedure NA for arrivals on SIE VORTAC airway radials 333 CW 131.

Procedure NA for arrivals at PANZE via V44 northeast bound, V184-229 northeast bound.

2000	↑	tr 308°	WEREK	tr 259°	KOVEK
------	---	---------	-------	---------	-------



ELEV 75	D	TDZE 63
---------	----------	---------



CATEGORY	A	B	C	D
RNP 0.30 DA		408/60	345 (400-1¼)	

AUTHORIZATION REQUIRED

TDZ/CL Rwy 13
HIRL Rwy 4-22 and 13-31
REIL Rwy 31

NE-2, 25 MAR 2021 to 22 APR 2021

NE-2, 25 MAR 2021 to 22 APR 2021