

ATLANTIC CITY, NEW JERSEY

HI-VOR/DME or TACAN RWY 31

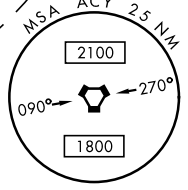
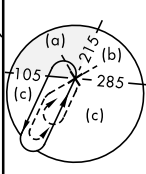
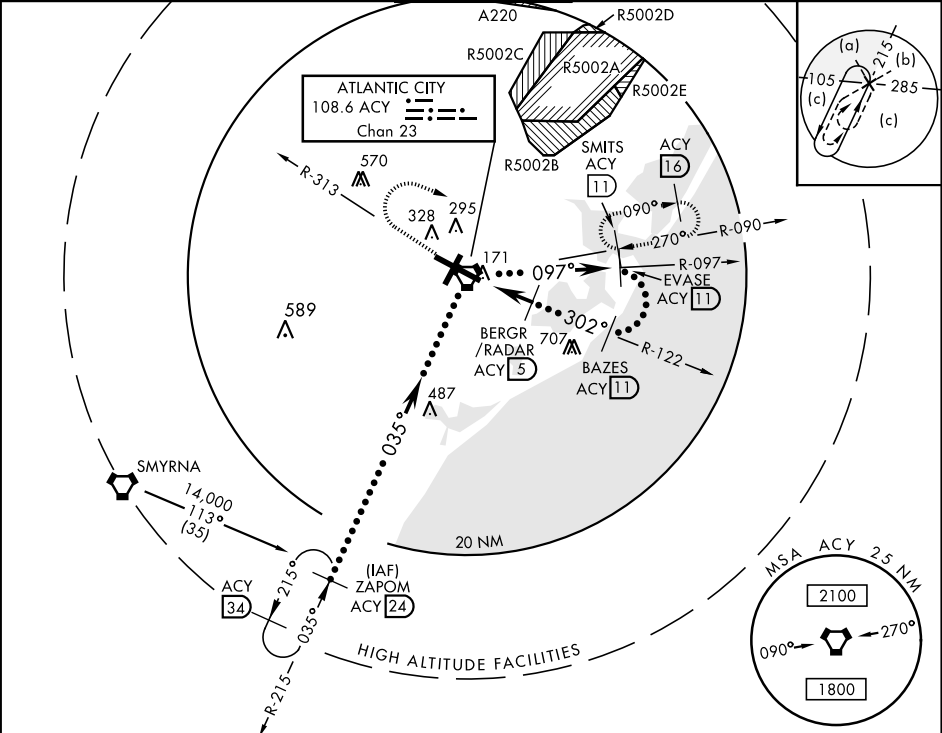
JAL-669 [USAF]

ATLANTIC CITY INTL (KACY)

VORTAC ACY 108.6 Chan 23	APCH CRS 302°	Rwy Idg 10,000 TDZE 64 Arpt Elev 75
--	-------------------------	--

MISSED APPROACH: Climbing right turn to 2000 via heading 120° and ACY R-090 to SMITS INT/ACY 11 DME and hold.

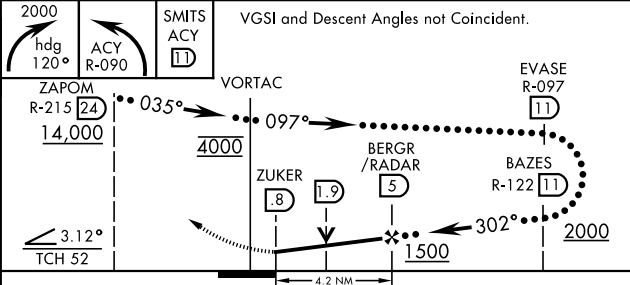
ATIS 125.725 316.15	ATLANTIC CITY APP CON 130°-309° 124.6 327.125 310°-129° 134.25 292.2	ATLANTIC CITY TOWER 120.3 239.0	GND CON 121.9 284.6	CLNC DEL 127.85 353.775	ASR
-------------------------------	--	---	-------------------------------	-----------------------------------	-----



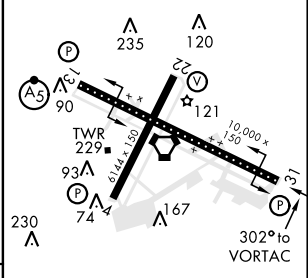
NE-2, 25 MAR 2021 to 22 APR 2021

NE-2, 25 MAR 2021 to 22 APR 2021

EMERG SAFE ALT 100 NM 4200



ELEV 75	TDZE 64
---------	---------



CATEGORY	C	D	E
S-31	480-1 1/4 417	(500-1 1/4)	480-1 1/2 417 (500-1 1/2)
CIRCLING	540-1 1/2 465 (500-1 1/2)	640-2 565 (600-2)	760-2 1/2 685 (700-2 1/2)

REIL Rwy 31
HIRL Rwy 4-22 and 13-31
TDZL/CL Rwy 13

HI-VOR/DME or TACAN RWY 31