

ATLANTIC CITY, NEW JERSEY

HI-ILS or LOC RWY 13

LOC/DME I-PVO 109.1 Chan 28	APCH CRS 128°	Rwy Idg TDZE Arprt Elev 10,000 75 75
--	-------------------------	--

JAL-669 [USAF]

ATLANTIC CITY INTL (KACY)

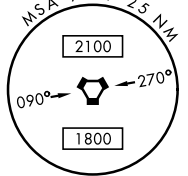
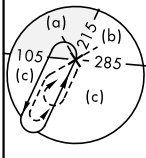
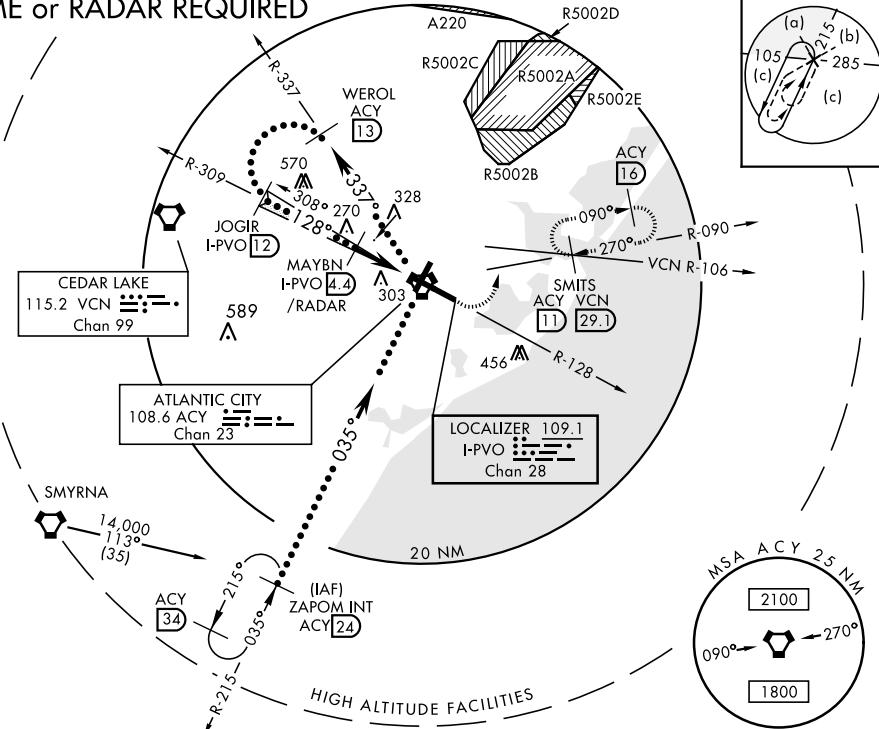
- ▼ * When ALS inop, increase RVR to 40 and vis to ¾ mile.
- ▲ ** When ALS inop, increase RVR to 50 and vis to 1 mile.



MISSED APPROACH: Climb to 600 then climbing left turn to 2000 via ACY R-090 to SMITS INT/ACY 11 DME and hold; or when directed by ATC, climb to 600 then climbing left turn to 2000 via heading 076° and VCN R-106 to SMITS INT/VCN 29.1 DME and hold E, RT, hdg 286° inbound.

ATIS 125.725 316.15	ATLANTIC CITY APP CON 130°-309° 124.6 327.125 310°-129° 134.25 292.2	ATLANTIC CITY TOWER 120.3 239.0	GND CON 121.9 284.6	CLNC DEL 127.85 353.775	ASR
-------------------------------	--	---	-------------------------------	-----------------------------------	-----

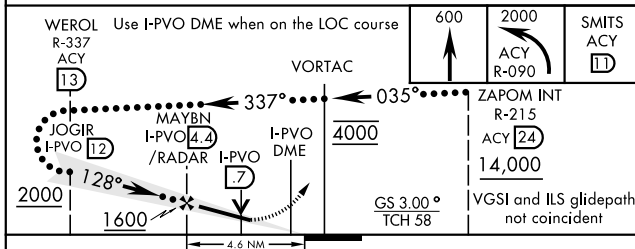
DME or RADAR REQUIRED



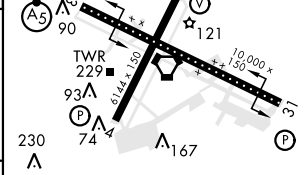
NE-2, 25 MAR 2021 to 22 APR 2021

NE-2, 25 MAR 2021 to 22 APR 2021

EMERG SAFE ALT 100 NM 4200



ELEV 75	TDZE 75
---------	---------



CATEGORY	C	D	E
S-ILS 13 *	275/18 200	(200-½)	275/24 200 (200-½)
S-LOC 13 **	420/24 345 (400-½)	420/40	345 (400-¾)
CIRCLING	540-1½ 465 (500-1½)	640-2 565 (600-2)	760-2½ 685 (700-2½)

REIL Rwy 31	FAF to MAP 4.6 NM				
HIRL Rwy 4-22 and 13-31					
TDZL/CL Rwy 13					
Knots	120	140	160	180	200
Min:Sec	2:18	1:58	1:43	1:32	1:23

ATLANTIC CITY, NEW JERSEY

39°27'N-74°35'W

ATLANTIC CITY INTL (KACY)

Amdt 4C 04FEB16

HI-ILS or LOC RWY 13