

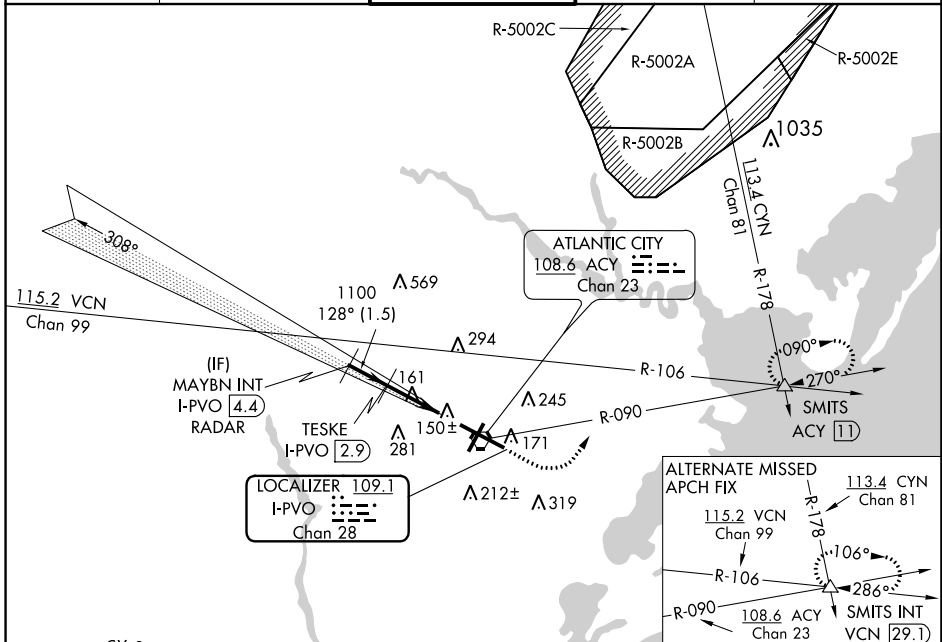
LOC/DME I-PVO 109.1 Chan 28	APP CRS 128°	Rwy ldg 10000 TDZE 75 Apt Elev 75
---	------------------------	--

COPTER ILS or LOC/DME RWY 13

ATLANTIC CITY INTL (ACY)

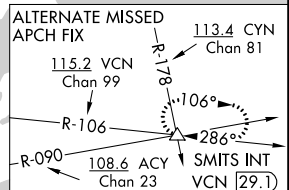
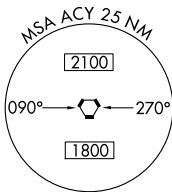
NA ASR	MALS 	MISSED APPROACH: Climb to 600 then climbing left turn to 2000 via ACY R-090 to SMITS INT/ACY 11 DME and hold.
-----------	----------	---

ATIS 125.725 316.15	ATLANTIC CITY APP CON 124.6 327.125	ATLANTIC CITY TOWER 120.3 239.0	GND CON 121.9 284.6	CLNC DEL 127.85 353.775
-------------------------------	---	---	-------------------------------	-----------------------------------



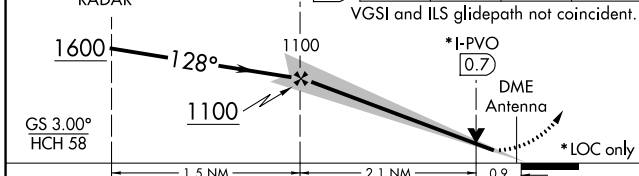
NE-2, 25 MAR 2021 to 22 APR 2021

NE-2, 25 MAR 2021 to 22 APR 2021

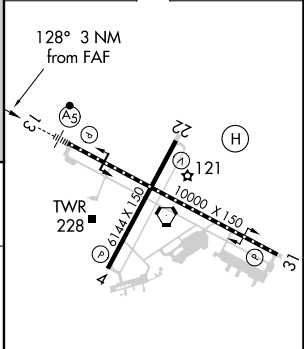


RADAR REQUIRED

Use I-PVO DME when on the localizer course.	600	2000	ACY R-090	SMITS
MAYBN INT I-PVO (4.4) RADAR	TESKE I-PVO (2.9)			
VGS1 and ILS glidepath not coincident.				



ELEV 75		TDZE 75
---------	--	---------



TDZ/CL Rwy 13
HIRL Rwys 4-22 and 13-31
REIL Rwy 31

CATEGORY	COPTER					FAF to MAP 3 NM					
H-ILS 13	275/12	200 (200-½)				Knots	45	60	75	90	105
H-LOC 13	420/24	345 (400-½)				Min:Sec	4:00	3:00	2:24	2:00	1:43