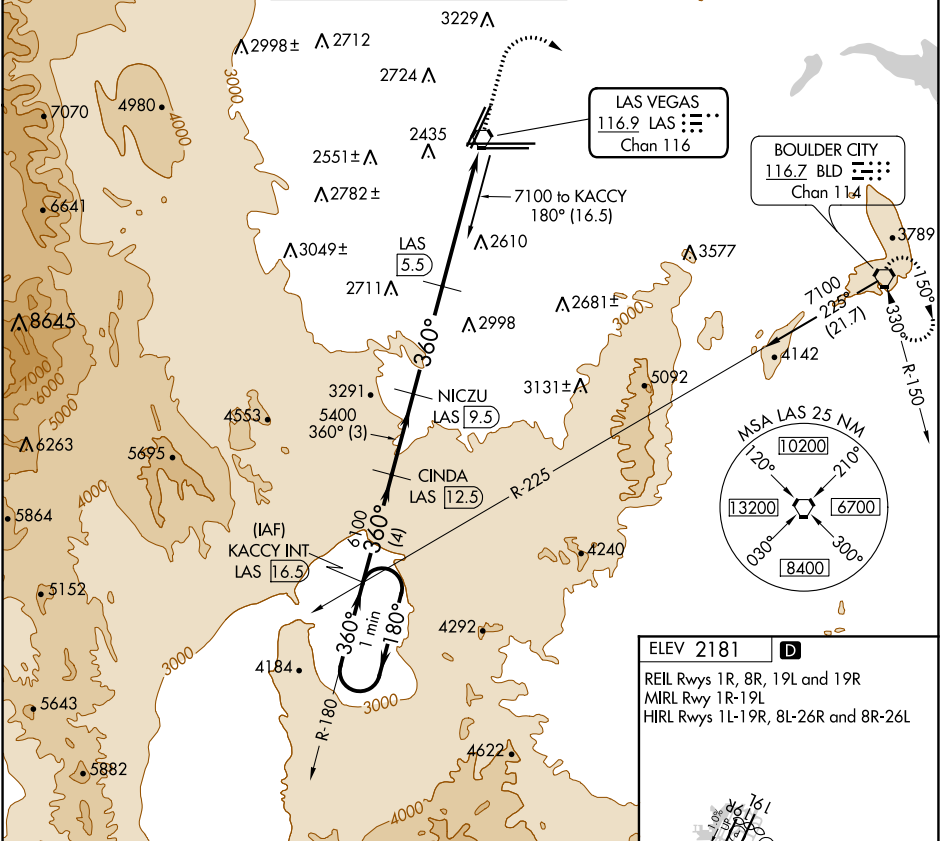


| | | | |
|--|------------------------|-----------------------------|---|
| VORTAC LAS 116.9 Chan 116 | APP CRS 360° | Rwy Idg TDZE Apt Elev | N/A N/A 2181 |
|--|------------------------|-----------------------------|---|

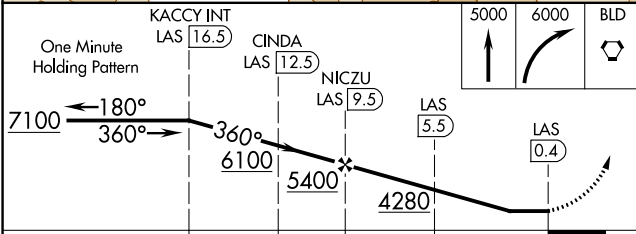
VOR/DME-A
MC CARRAN INTL (LAS)

| | | | | | |
|------------------------|---|--|---|--------------------------|-------|
| D-ATIS 132.4 | LAS VEGAS APP CON 125.025 379.15 (West) 125.6 282.2 (East) | LAS VEGAS TOWER 118.75 257.8 (Rwy 1L/19R, 1R/19L) 119.9 257.8 (Rwy 8L/26R, 8R/26L) | GND CON 121.1 270.8 E of 1R/19L 121.9 254.3 W of 1R/19L | CLNC DEL 118.0 | CPDLC |
| | <p>MISSED APPROACH: Climb to 5000 then climbing right turn to 6000 direct BLD VORTAC and hold.</p> | | | | |



SW-4, 25 MAR 2021 to 22 APR 2021

SW-4, 25 MAR 2021 to 22 APR 2021



ELEV 2181 **D**

REIL Rwys 1R, 8R, 19L and 19R
MIRL Rwy 1R-19L
HIRL Rwys 1L-19R, 8L-26R and 8R-26L

360° 9.1 NM from FAF

| CATEGORY | A | B | C | D |
|-------------------|----------------------|---|----------------------|----------------------|
| C CIRCLING | 3080-1¼ 899 (900-1¼) | | 3280-3 1099 (1100-3) | 3540-3 1359 (1400-3) |