

# RNAV (RNP) Z RWY 19R

MC CARRAN INTL (LAS)

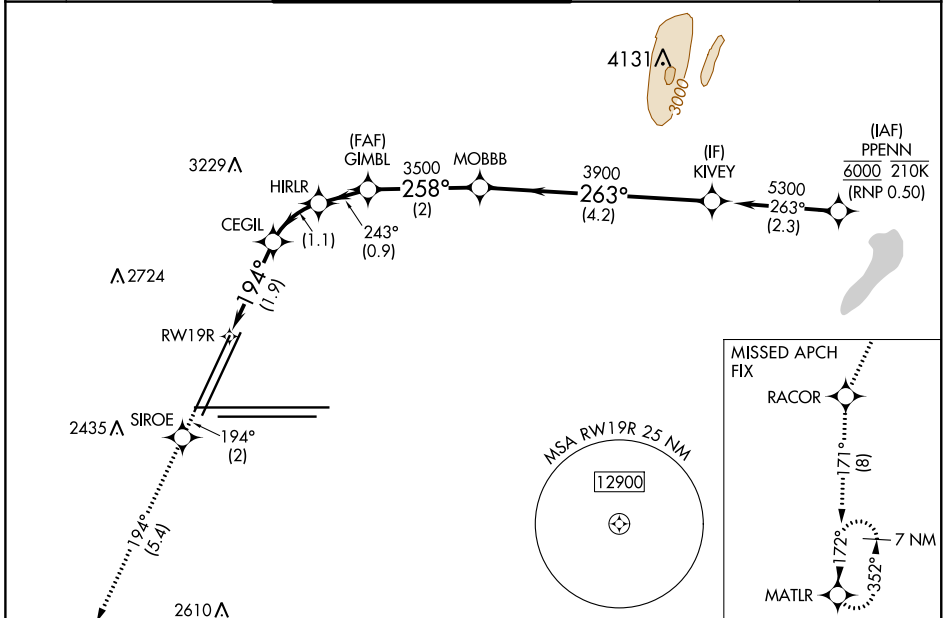
APP CRS	Rwy Idg	<b>8400</b>
<b>194°</b>	TDZE	<b>2117</b>
	Apt Elev	<b>2181</b>

RNP AR APCH. RF required.

**▽** For un compensated Baro-VNAV systems, procedure NA below 0°C or above 54°C. Missed approach requires RNP less than 1.0.

MISSED APPROACH: Climb to 7000 on the RNAV missed approach route to MATLR and hold, continue climb-in-hold to 7000.  
 \*Missed approach requires minimum climb of 300 feet per NM to 3000.

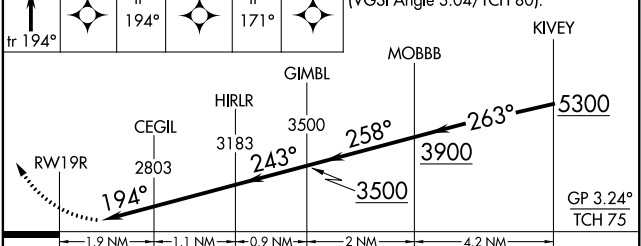
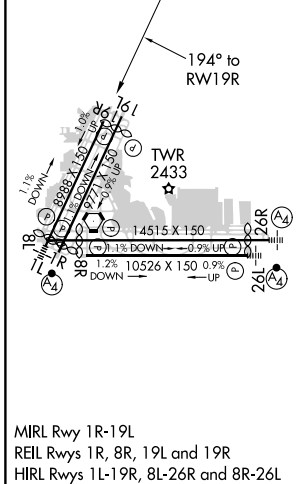
D-ATIS	LAS VEGAS APP CON	LAS VEGAS TOWER	GND CON	CLNC DEL	CPDLC
<b>132.4</b>	<b>125.025 379.15</b> (West) <b>125.6 282.2</b> (East)	<b>118.75 257.8</b> (Rwy 1L/19R, 1R/19L) <b>119.9 257.8</b> (Rwy 8L/26R, 8R/26L)	<b>121.1 270.8</b> E of 1R/19L <b>121.9 254.3</b> W of 1R/19L	<b>118.0</b>	



SW-4, 25 MAR 2021 to 22 APR 2021

SW-4, 25 MAR 2021 to 22 APR 2021

ELEV 2181	<b>D</b> TDZE 2117	7000	SIORE	RACOR	MATLR	VGSI and RNAV glidepath not coincident (VGSI Angle 3.04/TCH 80).
-----------	--------------------	------	-------	-------	-------	--



CATEGORY	A	B	C	D
RNP 0.10 DA*		2558-1 $\frac{3}{8}$	441 (400-1 $\frac{3}{8}$ )	
RNP 0.20 DA*		2576-1 $\frac{3}{8}$	459 (400-1 $\frac{3}{8}$ )	
RNP 0.30 DA*		2636-1 $\frac{3}{8}$	519 (500-1 $\frac{3}{8}$ )	
RNP 0.30 DA		2669-1 $\frac{3}{8}$	552 (500-1 $\frac{3}{8}$ )	

**AUTHORIZATION REQUIRED**