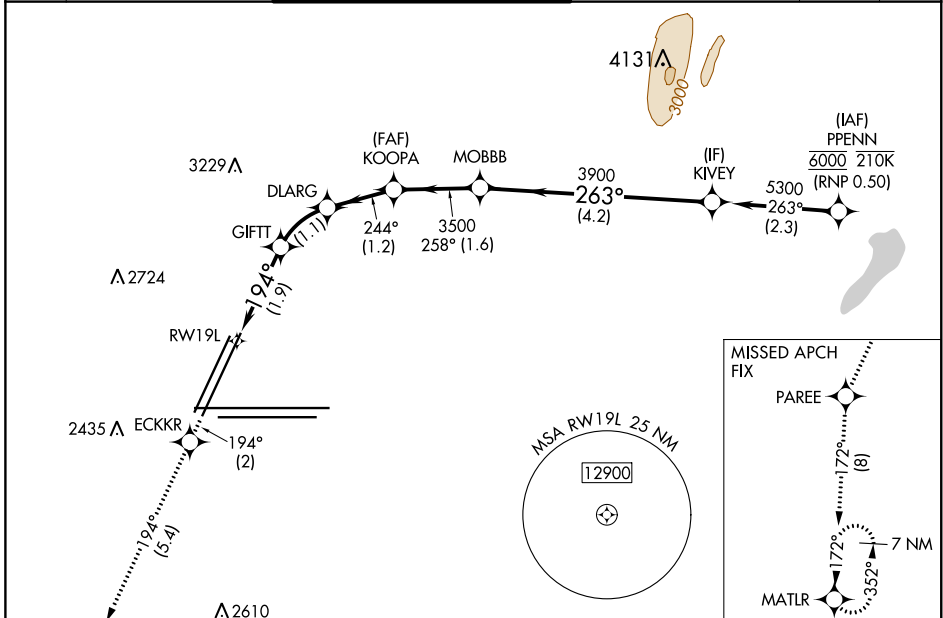


APP CRS	Rwy Idg	8803
194°	TDZE	2112
	Apt Elev	2181

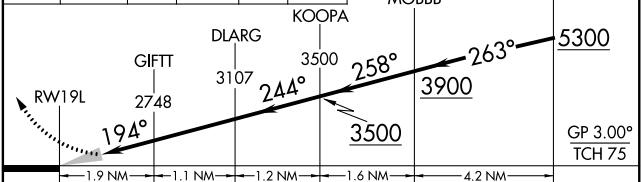
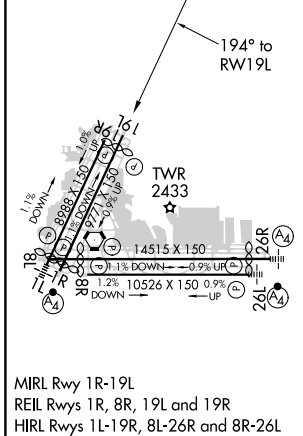
RNAV (RNP) Z RWY 19L

MC CARRAN INTL (LAS)

RNP AR APCH. RF required.		MISSED APPROACH: Climb to 7000 on the RNAV missed approach route to MATLR and hold, continue climb-in-hold to 7000. *Missed approach requires minimum climb of 225 feet per NM to 5000.			
▽ For uncompensated Baro-VNAV systems, procedure NA below 0°C or above 54°C. Missed approach requires RNP less than 1.0.					
D-ATIS	LAS VEGAS APP CON	LAS VEGAS TOWER		GND CON	CLNC DEL
132.4	125.025 379.15 (West) 125.6 282.2 (East)	118.75 257.8 (Rwy 1L/19R, 1R/19L) 119.9 257.8 (Rwy 8L/26R, 8R/26L)		121.1 270.8 E of 1R/19L 121.9 254.3 W of 1R/19L	118.0



ELEV 2181	D TDZE 2112	7000	ECKKR	PAR EE	MATLR
		↑ tr 194°	tr 194°	tr 172°	



CATEGORY	A	B	C	D
RNP 0.10 DA*	2470-1 358 (300-1)			
RNP 0.20 DA*	2488-1 376 (400-1)			
RNP 0.30 DA*	2512-1½ 400 (400-1½)			
RNP 0.30 DA	2582-1¾ 470 (500-1¾)			

AUTHORIZATION REQUIRED

SW-4, 25 MAR 2021 to 22 APR 2021

SW-4, 25 MAR 2021 to 22 APR 2021