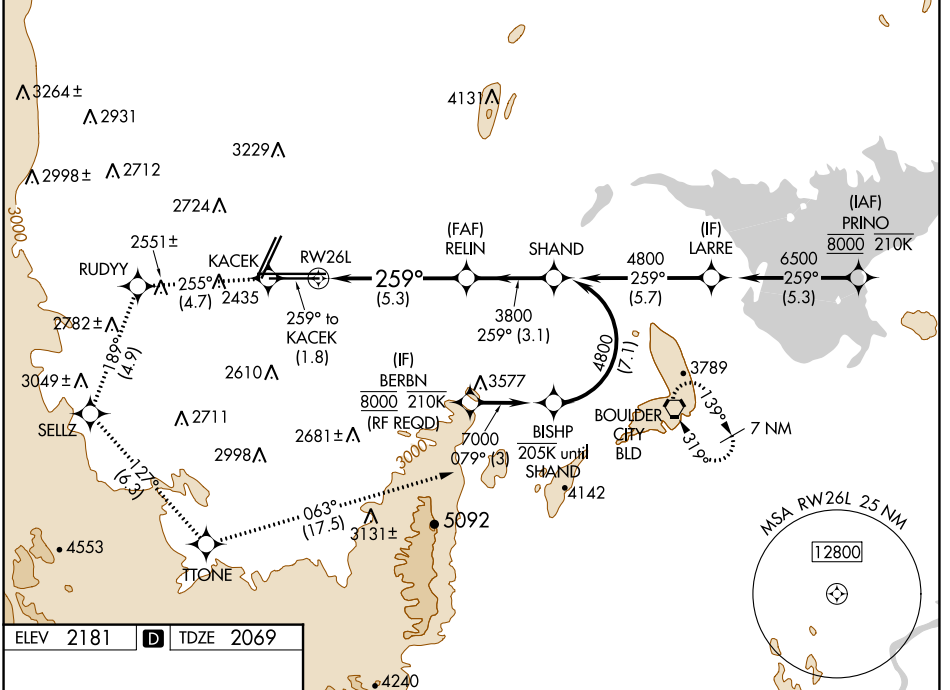


APP CRS 259°	Rwy Idg 10525 TDZE 2069 Apt Elev 2181
------------------------	--

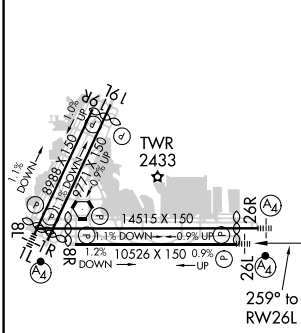
RNAV (RNP) RWY 26L

MC CARRAN INTL (LAS)

RNP AR APCH.		MALSF	MISSED APPROACH: Climb to 7000 on the RNAV missed approach route to BLD VORTAC and hold. *Missed approach requires minimum climb of 255 feet per NM to 3200.	
For un compensated Baro-VNAV systems, procedure NA below 0°C or above 54°C.				
D-ATIS 132.4	LAS VEGAS APP CON 125.025 379.15 (West) 125.6 282.2 (East)	LAS VEGAS TOWER 118.75 257.8 (Rwy 1L/19R, 1R/19L) 119.9 257.8 (Rwy 8L/26R, 8R/26L)		GND CON 121.1 270.8 E of 1R/19L 121.9 254.3 W of 1R/19L
			CLNC DEL 118.0	CPDLC

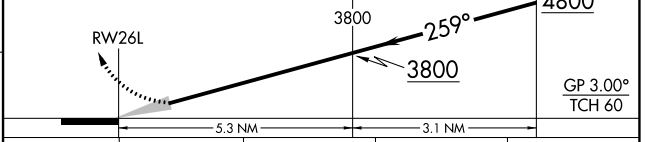


ELEV 2181	D	TDZE 2069
-----------	----------	-----------



7000	KACEK	RUDYY	SELLZ	TITONE	BLD
↑	◆	◆	◆	◆	◆
fr 259°	fr 255°	fr 189°	fr 127°	fr 063°	

VGSi and RNAV glidepath not coincident (VGSi Angle 3.00/TCH 84).
See planview for multiple IF locations.



CATEGORY	A	B	C	D
RNP 0.30 DA*	2450-7/8 381 (300-7/8)			
RNP 0.30 DA	2502-1 433 (400-1)			

MIRL Rwy 1R-19L
REIL Rwy 1R, 8R, 19L and 19R
HIRL Rwy 1L-19R, 8L-26R and 8R-26L

SW-4, 25 MAR 2021 to 22 APR 2021

SW-4, 25 MAR 2021 to 22 APR 2021