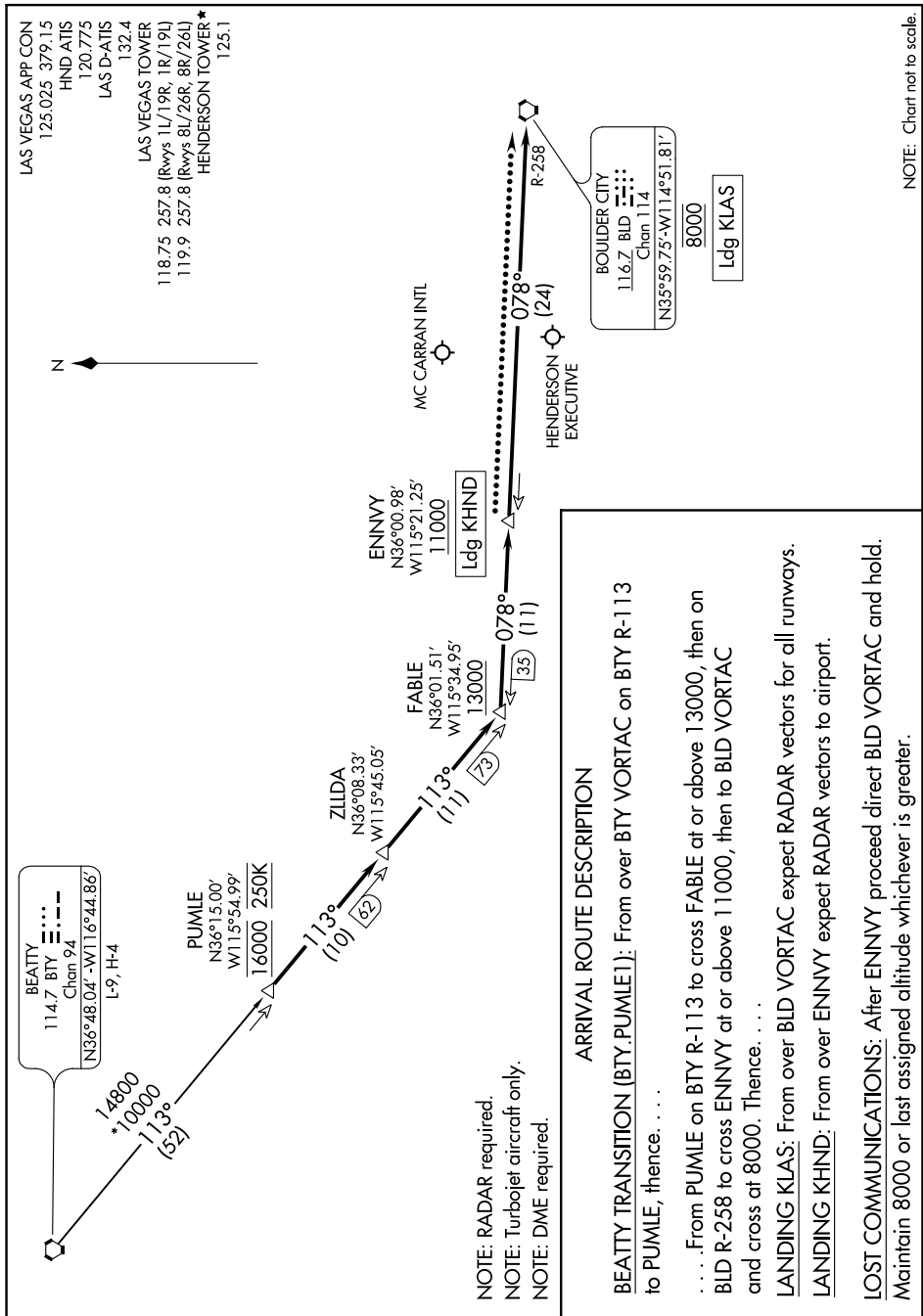


PUMLE ONE ARRIVAL

AL-662 (FAA)

LAS VEGAS, NEVADA

SW-4, 25 MAR 2021 to 22 APR 2021



NOTE: Chart not to scale.

ARRIVAL ROUTE DESCRIPTION

BEATY TRANSITION (BTY.PUMLE1): From over BTY VORTAC on BTY R-113 to PUMLE, thence. . . .

. . . . From PUMLE on BTY R-113 to cross FABLE at or above 13000, then on BLD R-258 to cross ENNVY at or above 11000, then to BLD VORTAC and cross at 8000. Thence. . . .

LANDING KLAS: From over BLD VORTAC expect RADAR vectors for all runways.

LANDING KHND: From over ENNVY expect RADAR vectors to airport.

LOST COMMUNICATIONS: After ENNVY proceed direct BLD VORTAC and hold. Maintain 8000 or last assigned altitude whichever is greater.

SW-4, 25 MAR 2021 to 22 APR 2021

PUMLE ONE ARRIVAL

LAS VEGAS, NEVADA