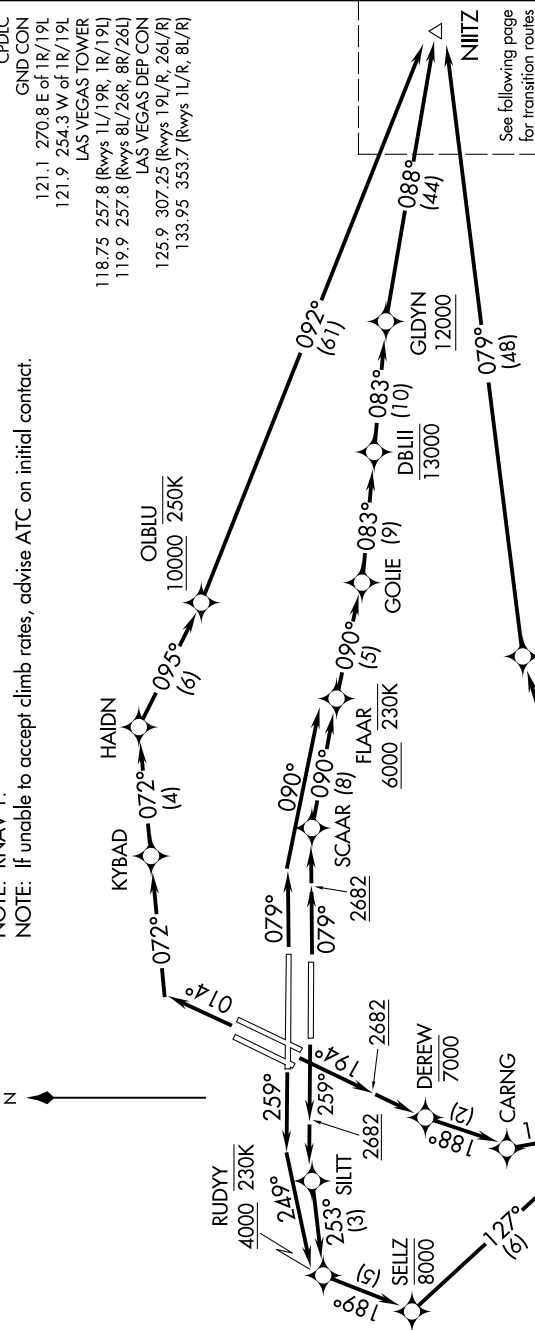


# N11Z ONE DEPARTURE (RNAV) Departure Routes

SW-4, 25 MAR 2021 to 22 APR 2021

**TOP ALTITUDE:**  
FL190

- NOTE: RADAR required for non-GPS equipped aircraft.
- NOTE: Turbojets only.
- NOTE: DME/DME/IRU or GPS required.
- NOTE: RNAV 1.
- NOTE: If unable to accept climb rates, advise ATC on initial contact.



See following page for transition routes

**TAKEOFF MINIMUMS**

- Rwys 1L/R: Standard with minimum climb of 500' per NM to 2682 then 280' per NM to 4800.
- Rwys 8L/R: Standard with minimum climb of 500' per NM to 2682.
- Rwys 19L/R: Standard with minimum climb of 500' per NM to 2682 then 270' per NM to 6200.
- Rwys 26L/R: Standard with minimum climb of 500' per NM to 2682 then 240' per NM to 5000.

NOTE: Chart not to scale.

(CONTINUED ON FOLLOWING PAGE)

SW-4, 25 MAR 2021 to 22 APR 2021

# N11Z ONE DEPARTURE (RNAV) Departure Routes