

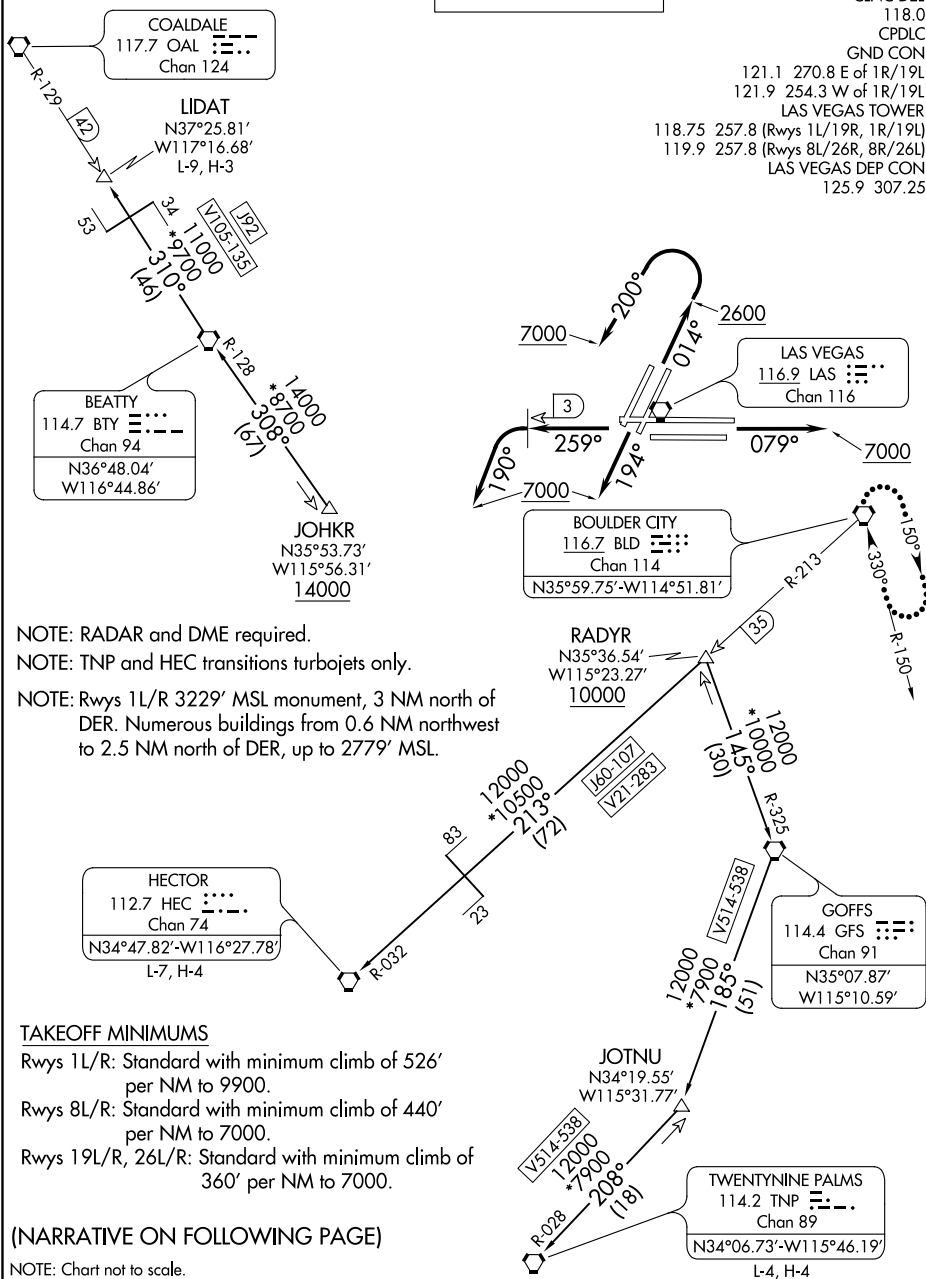
(MCCRN6.LAS) 21056  
**MCCARRAN SIX DEPARTURE**

AL-662 (FAA)

MC CARRAN INTL (LAS)  
 LAS VEGAS, NEVADA

**TOP ALTITUDE:  
 ASSIGNED BY ATC**

D-ATIS  
 132.4  
 CLNC DEL  
 118.0  
 CPDLC  
 GND CON  
 121.1 270.8 E of 1R/19L  
 121.9 254.3 W of 1R/19L  
 LAS VEGAS TOWER  
 119.9 257.8 (Rwys 1L/19R, 1R/19L)  
 LAS VEGAS DEP CON  
 125.9 307.25



NOTE: RADAR and DME required.  
 NOTE: TNP and HEC transitions turbojets only.  
 NOTE: Rwys 1L/R 3229' MSL monument, 3 NM north of DER. Numerous buildings from 0.6 NM northwest to 2.5 NM north of DER, up to 2779' MSL.

**TAKEOFF MINIMUMS**  
 Rwys 1L/R: Standard with minimum climb of 526' per NM to 9900.  
 Rwys 8L/R: Standard with minimum climb of 440' per NM to 7000.  
 Rwys 19L/R, 26L/R: Standard with minimum climb of 360' per NM to 7000.

(NARRATIVE ON FOLLOWING PAGE)

NOTE: Chart not to scale.

**MCCARRAN SIX DEPARTURE**  
 (MCCRN6.LAS) 25FEB21

LAS VEGAS, NEVADA  
 MC CARRAN INTL (LAS)

SW-4, 25 MAR 2021 to 22 APR 2021

SW-4, 25 MAR 2021 to 22 APR 2021