

JOHKR ONE DEPARTURE (RNAV) Departure Routes

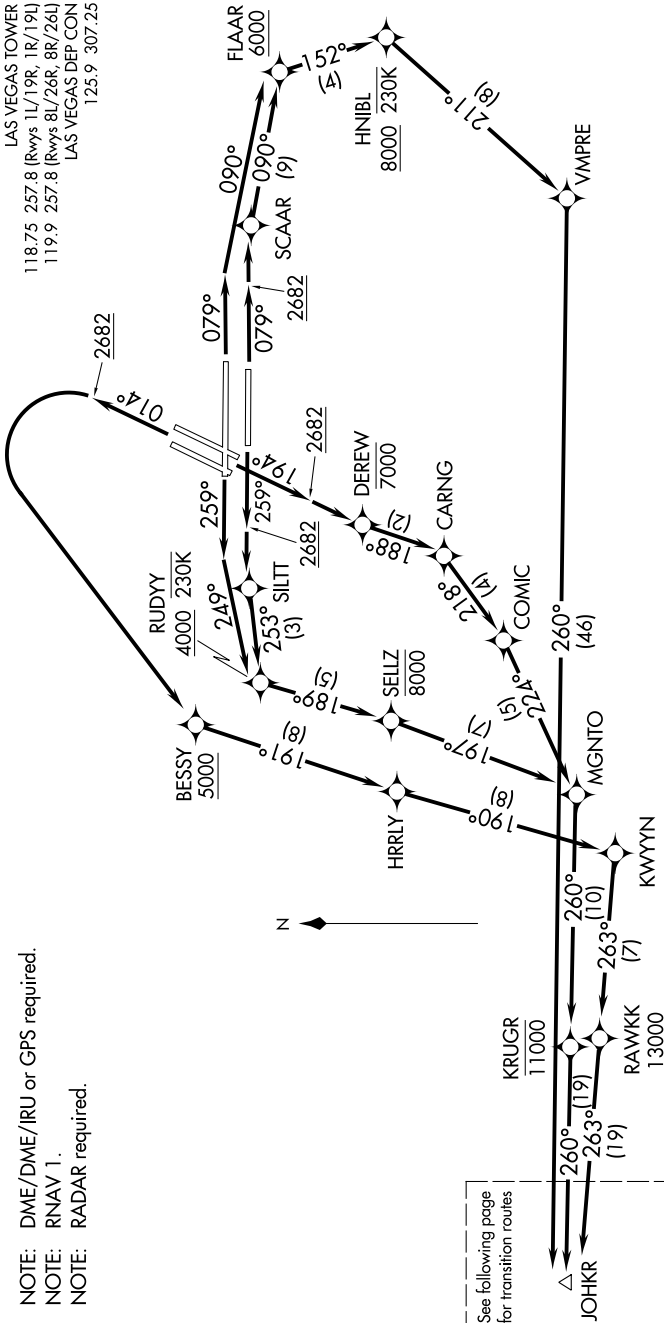
TAKEOFF MINIMUMS

Rwy 1L: Standard with minimum climb of 514' per NM to 4900.
Rwy 1R: Standard with minimum climb of 526' per NM to 4800.
Rwys 8L/R: Standard with minimum climb of 500' per NM to 2682, then 219' per NM to 6300.
Rwys 19L/R: Standard with minimum climb of 500' per NM to 2682, then 334' per NM to 8900.
Rwys 26L/R: Standard with minimum climb of 500' per NM to 2682, then 345' per NM to 8900.

NOTE: DME/DME/IRU or GPS required.
NOTE: RNAV 1.
NOTE: RADAR required.

TOP ALTITUDE:
FL190

D-ATIS 132.4
CLNC DEL 118.0
CPDLC
GND CON 121.1 270.8 E of 1R/19L
121.9 254.3 W of 1R/19L
LAS VEGAS TOWER 118.75 257.8 (Rwys 1L/19R, 1R/19L)
119.9 257.8 (Rwys 8L/26R, 8R/26L)
LAS VEGAS DEP CON 125.9 307.25



(CONTINUED ON FOLLOWING PAGE)

NOTE: Chart not to scale.

SW-4, 25 MAR 2021 to 22 APR 2021

SW-4, 25 MAR 2021 to 22 APR 2021