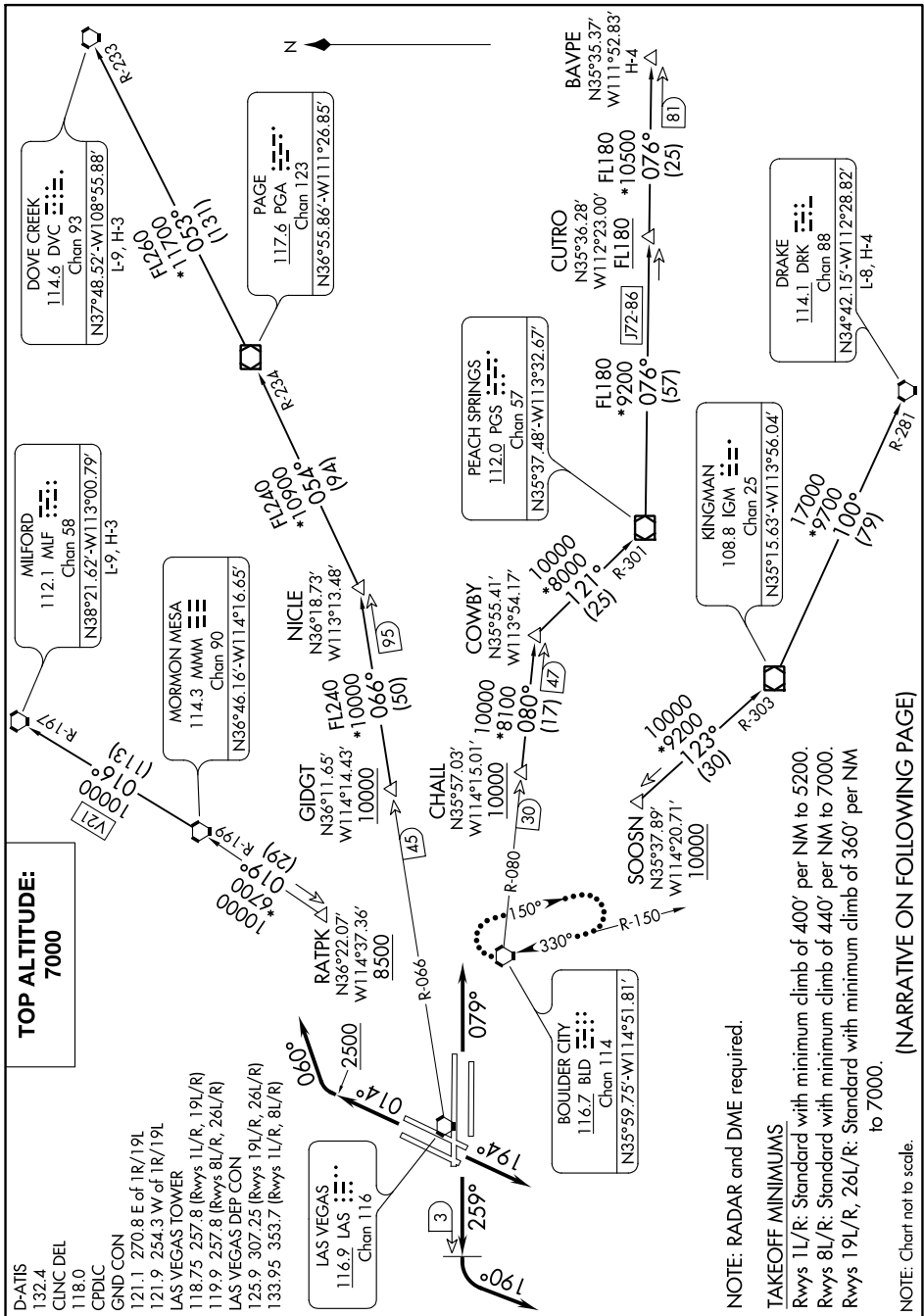


HOOVER SEVEN DEPARTURE

AL-662 (FAA)

MC CARRAN INTL (LAS)
LAS VEGAS, NEVADA

SW-4, 25 MAR 2021 to 22 APR 2021



**TOP ALTITUDE:
7000**

- D-ATIS 132.4
- CLNC DEL 118.0
- CPDLC
- GND CON 121.1 270.8 E of 1R/19L
- 121.9 254.3 W of 1R/19L
- LAS VEGAS TOWER 118.75 257.8 (Rwys 1L/R, 19L/R)
- 119.9 257.8 (Rwys 8L/R, 26L/R)
- LAS VEGAS DEP CON 125.9 307.25 (Rwys 19L/R, 26L/R)
- 133.95 353.7 (Rwys 1L/R, 8L/R)

NOTE: RADAR and DME required.

TAKEOFF MINIMUMS

- Rwys 1L/R: Standard with minimum climb of 400' per NM to 5200.
- Rwys 8L/R: Standard with minimum climb of 440' per NM to 7000.
- Rwys 19L/R, 26L/R: Standard with minimum climb of 360' per NM to 7000.

NOTE: Chart not to scale. (NARRATIVE ON FOLLOWING PAGE)

SW-4, 25 MAR 2021 to 22 APR 2021