

# GIDGT ONE DEPARTURE (RNAV) Departure Routes

12020 APR 2021 to 22 APR 2021

## DEPARTURE ROUTE DESCRIPTION

**TAKEOFF RUNWAYS 1L/R:** Climb on heading 014° to intercept course 072° to KYBAD, then on track 072° to HAIN, then on track 073° to cross AIRRO at or above 11 500 and at or below 250K, then on track 075° to GIDGT, thence. . . .

**TAKEOFF RUNWAYS 8L/R:** Climb on heading 079° to 2682, then direct AYUJH, cross AYUJH at or above 6000, then on track 079° to MLVIN, then on track 064° to cross GEEZY at or above 12000, then on track 065° to cross JETTIG at or below 14000, then on track 065° to GIDGT, thence. . . .

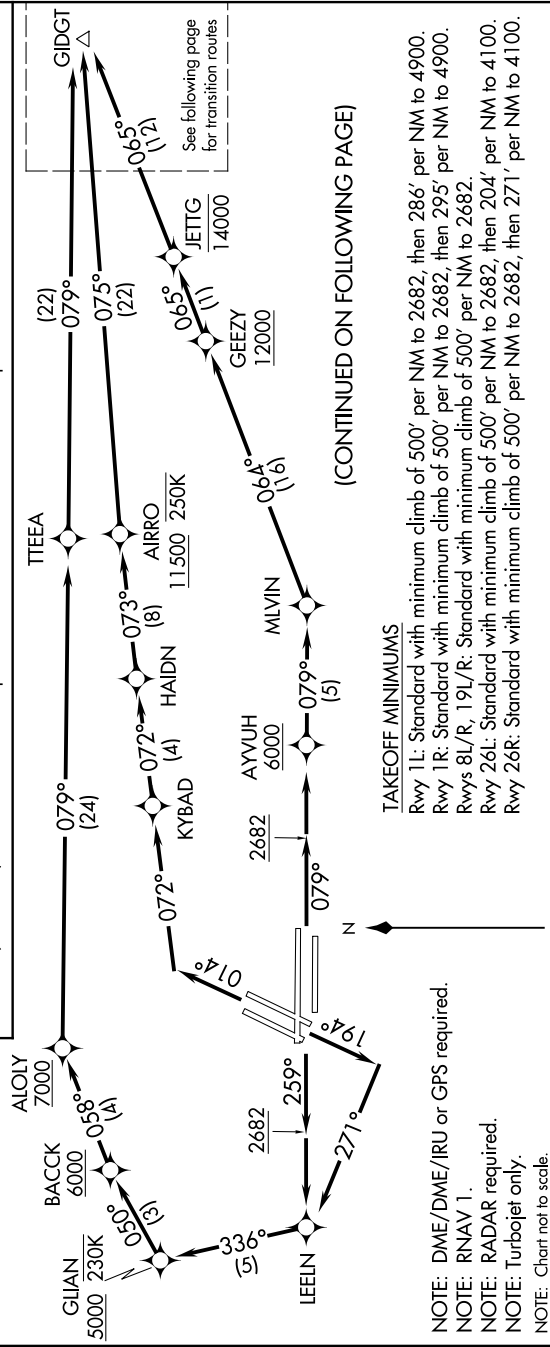
**TAKEOFF RUNWAYS 19L/R:** Climb on heading 194° to intercept course 271° to LEEIN, then on track 336° to cross GJIAN at or above 5000 and at or below 230K, then on track 050° to cross BACCK at or above 6000, then on track 058° to cross ALOLY at or above 7000, then on track 079° to TEEA, then on track 079° to GIDGT, thence. . . .

**TAKEOFF RUNWAYS 26L/R:** Climb on heading 259° to 2682, then direct LEEIN, then on track 336° to cross GJIAN at or above 5000 and at or below 230K, then on track 050° to cross BACCK at or above 6000, then on track 058° to cross ALOLY at or above 7000, then on track 079° to TEEA, then on track 079° to GIDGT, thence. . . .

. . . on (transition). Maintain FL190. Expect filed altitude 10 minutes after departure.

**DATS**  
132.4  
**CLNC DEL**  
118.0  
**CPBLC**  
**GND CON**  
121.1 270.8 E of 1R/19L  
121.9 254.3 W of 1R/19L  
**LAS VEGAS TOWER**  
118.75 257.8 (Rwys 1L/19R, 1R/19L)  
119.9 257.8 (Rwys 8L/26R, 8R/26L)  
**LAS VEGAS DEP CON**  
133.95 353.7

**TOP ALTITUDE:**  
**FL190**



(CONTINUED ON FOLLOWING PAGE)

### TAKEOFF MINIMUMS

- Rwy 1L: Standard with minimum climb of 500' per NM to 2682, then 286' per NM to 4900.
- Rwy 1R: Standard with minimum climb of 500' per NM to 2682, then 295' per NM to 4900.
- Rwys 8L/R, 19L/R: Standard with minimum climb of 500' per NM to 2682.
- Rwy 26L: Standard with minimum climb of 500' per NM to 2682, then 204' per NM to 4100.
- Rwy 26R: Standard with minimum climb of 500' per NM to 2682, then 271' per NM to 4100.

- NOTE: DME/DME/IRU or GPS required.
- NOTE: RNAV 1.
- NOTE: RADAR required.
- NOTE: Turbojet only.
- NOTE: Chart not to scale.

# GIDGT ONE DEPARTURE (RNAV) Departure Routes

SW-4, 25 MAR 2021 to 22 APR 2021