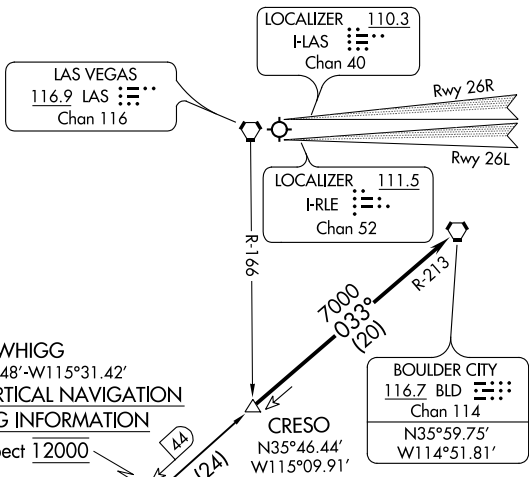


CRESO FOUR ARRIVAL

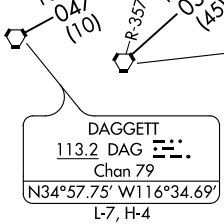
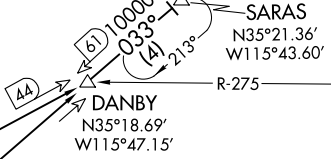
AL-662 (FAA)

LAS VEGAS APP CON
 118.4 307.25
 LAS VEGAS TOWER
 118.75 257.8 (Rwy 1L/19R, 1R/19L)
 119.9 257.8 (Rwy 8L/26R, 8R/26L)
 D-ATIS
 132.4



WHIGG
 N35°30.48'-W115°31.42'
TURBOJET VERTICAL NAVIGATION
PLANNING INFORMATION
 Expect 12000

JOKUR
 N35°02.51'-W116°23.98'
TURBOJET VERTICAL NAVIGATION
PLANNING INFORMATION
 Expect FL240



GOFFS
 114.4 GFS
 Chan 91

NOTE: Chart not to scale.

ARRIVAL ROUTE DESCRIPTION

DAGGETT TRANSITION (DAG.CRESO4): From over DAG VORTAC via DAG R-047 and BLD R-213 to CRESO, thence. . . .

HECTOR TRANSITION (HEC.CRESO4): From over HEC VORTAC via HEC R-032 and BLD R-213 to CRESO, thence. . . .

. . . .From over CRESO then on BLD R-213 to BLD VORTAC. Runways 1, 8, and 19 expect RADAR vectors to final approach course. From BLD VORTAC, expect ILS approach Runway 26L/R.

SW-4, 25 MAR 2021 to 22 APR 2021

SW-4, 25 MAR 2021 to 22 APR 2021