

COKTL ONE ARRIVAL (RNAV) Transition Routes

LAS VEGAS APP CON

125.025 379.15

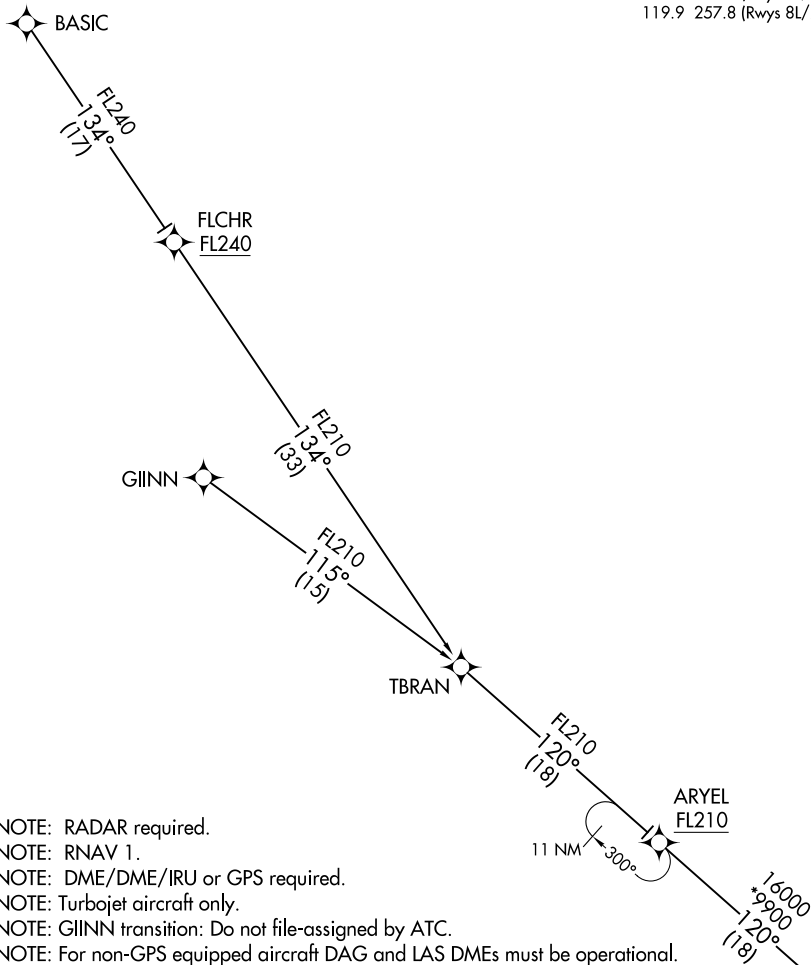
D-ATIS

132.4

LAS VEGAS TOWER

118.75 257.8 (Rwys 1L/19R, 1R/19L)

119.9 257.8 (Rwys 8L/26R, 8R/26L)



NOTE: RADAR required.

NOTE: RNAV 1.

NOTE: DME/DME/IRU or GPS required.

NOTE: Turbojet aircraft only.

NOTE: GIINN transition: Do not file-assigned by ATC.

NOTE: For non-GPS equipped aircraft DAG and LAS DMEs must be operational.

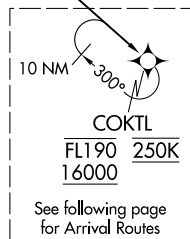
(CONTINUED ON FOLLOWING PAGE)

BASIC TRANSITION (BASIC.COKTL1)

FLCHR TRANSITION (FLCHR.COKTL1)

GIINN TRANSITION (GIINN.COKTL1)

NOTE: Chart not to scale.



COKTL ONE ARRIVAL (RNAV) Transition Routes

SW-4, 25 MAR 2021 to 22 APR 2021

SW-4, 25 MAR 2021 to 22 APR 2021