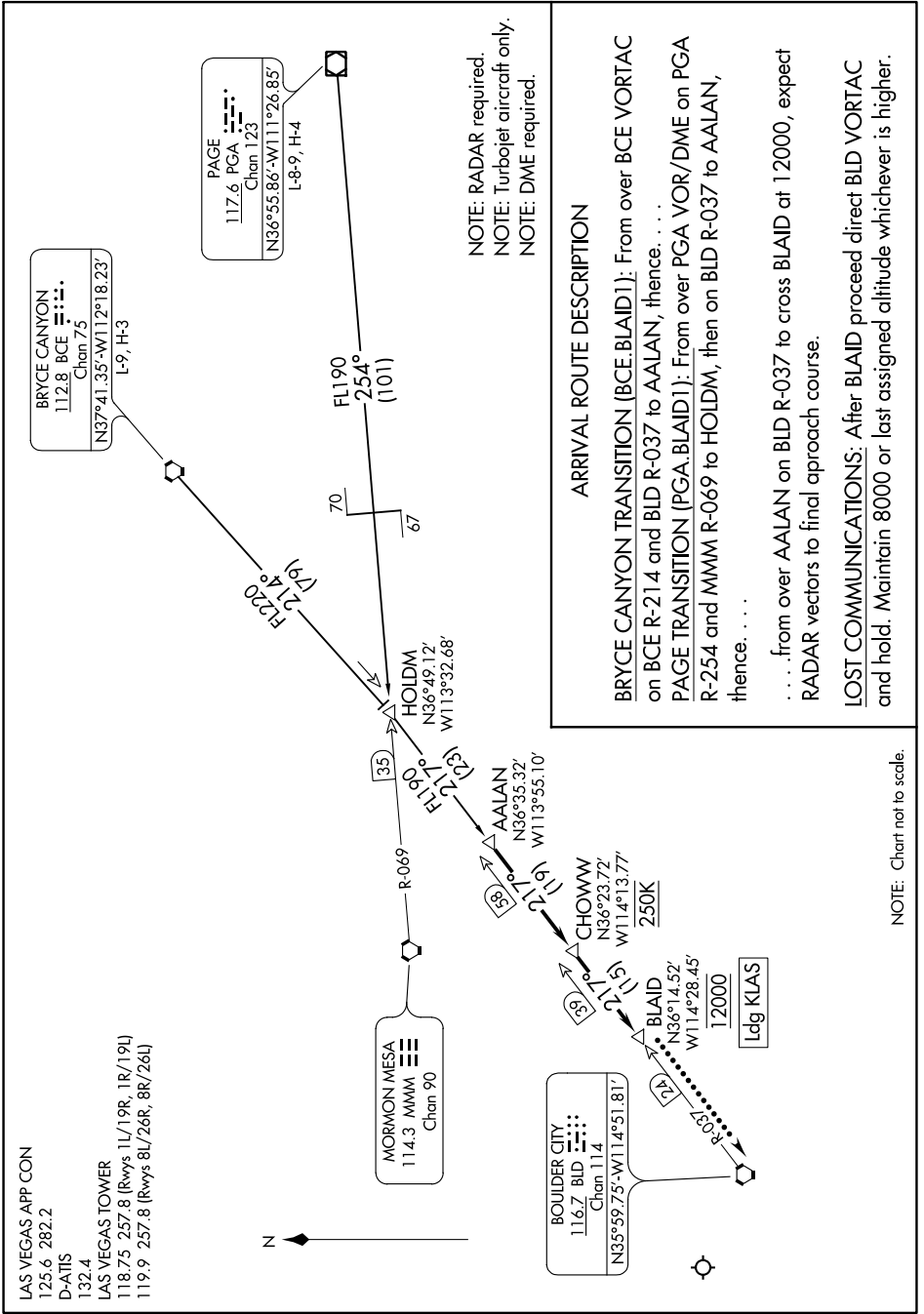


# BLAID ONE ARRIVAL

AL-662 (FAA)

MC CARRAN INTL (LAS)  
LAS VEGAS, NEVADA

SW-4, 25 MAR 2021 to 22 APR 2021



NOTE: RADAR required.  
 NOTE: Turboplet aircraft only.  
 NOTE: DME required.

### ARRIVAL ROUTE DESCRIPTION

**BRYCE CANYON TRANSITION (BCE.BLAID1):** From over BCE VORTAC on BCE R-214 and BLD R-037 to AALAN, thence. . . .  
**PAGE TRANSITION (PGA.BLAID1):** From over PGA VOR/DME on PGA R-254 and MMM R-069 to HOLDM, then on BLD R-037 to AALAN, thence. . . .  
 . . . from over AALAN on BLD R-037 to cross BLAID at 12000, expect RADAR vectors to find approach course.  
**LOST COMMUNICATIONS:** After BLAID proceed direct BLD VORTAC and hold. Maintain 8000 or last assigned altitude whichever is higher.

LAS VEGAS APP CON  
 125.6 282.2  
 D-ATIS  
 132.4  
 LAS VEGAS TOWER  
 118.75 257.8 (Rvys 1L/19R, 1R/19L)  
 119.9 257.8 (Rvys 8L/26R, 8R/26L)

MORMON MESA  
 114.3 MMM  
 Chan 90

BOULDER CITY  
 116.7 BLD  
 Chan 114  
 N35°59.75'-W114°51.81'

Ldg KLAS

NOTE: Chart not to scale.

SW-4, 25 MAR 2021 to 22 APR 2021