

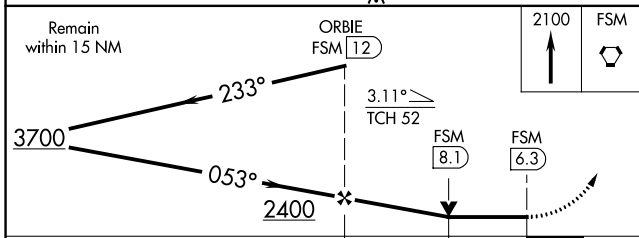
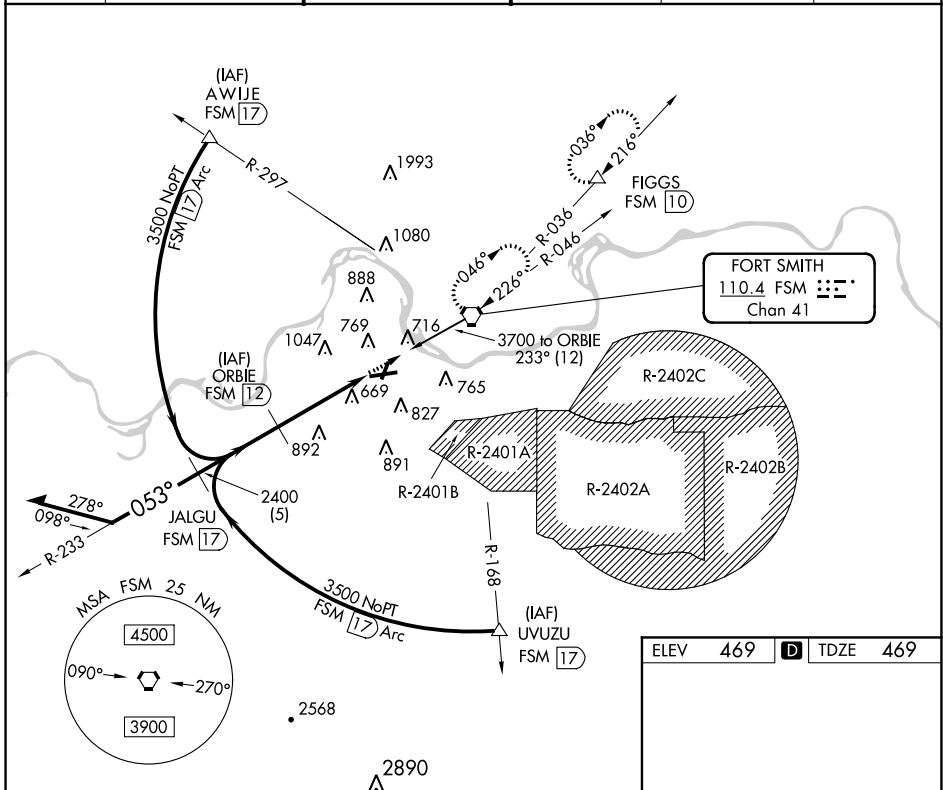
VORTAC FSM 110.4 Chan 41	APP CRS 053°	Rwy Idg TDZE 469 Apt Elev 469
--	------------------------	---

VOR/DME or TACAN RWY 7

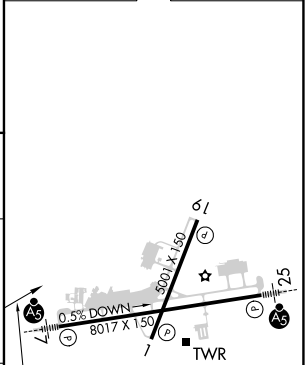
FORT SMITH RGNL (FSM)

 Inoperative table does not apply. Circling NA northwest of Rwy 7 and 19 for Cat E. Circling Cat E NA when R-2401B active. ASR	MALS R 	MISSED APPROACH: Climb to 2100 direct FSM VORTAC and hold. (TACAN aircraft climbing left turn to 4000 direct FSM VORTAC then via R-036 to FIGGS 10 DME and hold northeast, right turn 216° inbound.)		
		(IAF) AWIJE FSM 17 (IAF) ORBIE FSM 12 (IAF) UVUZU FSM 17		

ATIS 126.3	RAZORBACK APP CON * 120.9 343.75	FORT SMITH TOWER * 118.3 (CTAF) 323.175	GND CON 121.9 275.8	CLNC DEL 133.85 278.3	UNICOM 122.95
----------------------	--	---	-------------------------------	---------------------------------	-------------------------



ELEV 469	TDZE 469
----------	----------



CATEGORY	A	B	C	D	E
S-7	1080-1 611 (700-1)		1080-1 ³ / ₄ 611 (700-1 ³ / ₄)	1080-2 611 (700-2)	1080-2 ¹ / ₄ 611 (700-2 ¹ / ₄)
CIRCLING	1140-1 671 (700-1)		1140-2 671 (700-2)	1140-2 ¹ / ₄ 671 (700-2 ¹ / ₄)	1200-2 ¹ / ₂ 731 (800-2 ¹ / ₂)

SC-1, 25 MAR 2021 to 22 APR 2021

SC-1, 25 MAR 2021 to 22 APR 2021