

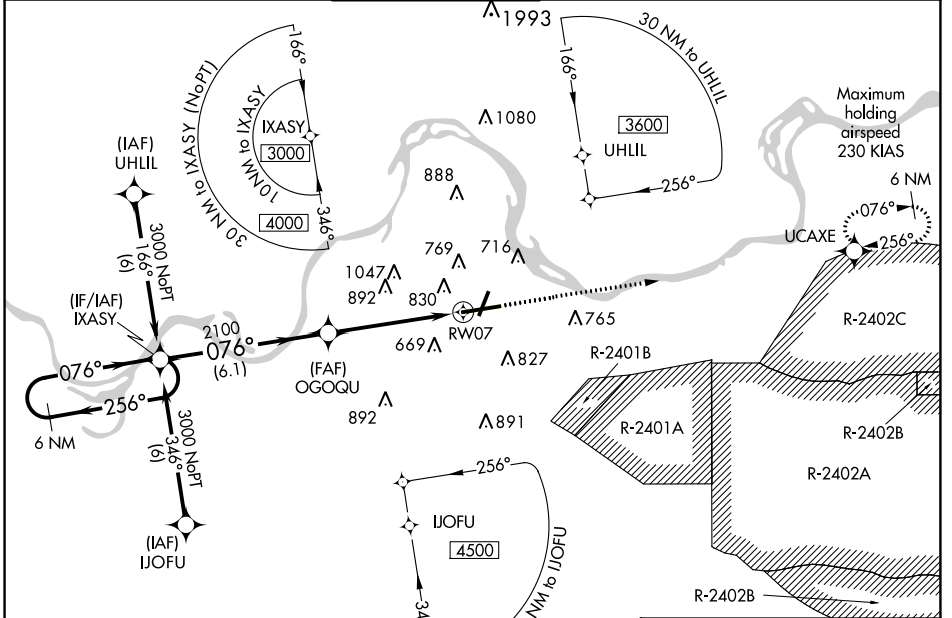
WAAS CH <b>77917</b> <b>W07A</b>	APP CRS <b>076°</b>	Rwy Idg TDZE Apt Elev	<b>8017</b> <b>469</b> <b>469</b>
--	------------------------	-----------------------------	---

# RNAV (GPS) RWY 7

FORT SMITH RGNL (F'SM)

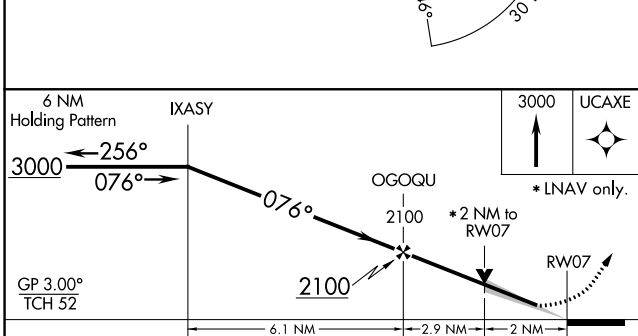
RNP APCH.	<p>▲ For inop ALS, increase LPV Cat E visibility to 3/4, LNAV/VNAV Cat E visibility to 2 1/4 and LNAV Cat E visibility to 1 1/2. Circling NA for Cat E northwest of Rwy 7 and 19. For uncompensated Baro-VNAV systems, LNAV/VNAV NA below -15°C or above 48°C. Circling Cat E NA when R-2401B active.</p>	MALSR	<p>MISSED APPROACH: Climb to 3000 direct UCAXE and hold.</p>
-----------	---	-------	--

ATIS <b>126.3</b>	RAZORBACK APP CON * <b>120.9 343.75</b>	FORT SMITH TOWER * <b>118.3 (CTAF) 0 323.175</b>	GND CON <b>121.9 275.8</b>	CLNC DEL <b>133.85 278.3</b>	UNICOM <b>122.95</b>
----------------------	--	---	-------------------------------	---------------------------------	-------------------------



SC-1, 25 MAR 2021 to 22 APR 2021

SC-1, 25 MAR 2021 to 22 APR 2021



ELEV 469	<b>D</b> TDZE 469
----------	-------------------

CATEGORY	A	B	C	D	E
LPV DA		669-1/2	200 (200-1/2)		
LNAV/VNAV DA		1085-1 3/4	616 (700-1 3/4)		
LNAV MDA	1140-1/2 671 (700-1/2)	1140-1 1/2 671 (700-1 1/2)	1140-1 3/4 671 (700-1 3/4)	1140-2 671 (700-2)	1140-2 671 (700-2)
CIRCLING	1140-1 671 (700-1)	1140-2 671 (700-2)	1140-2 1/4 671 (700-2 1/4)	1200-2 1/2 731 (800-2 1/2)	

