


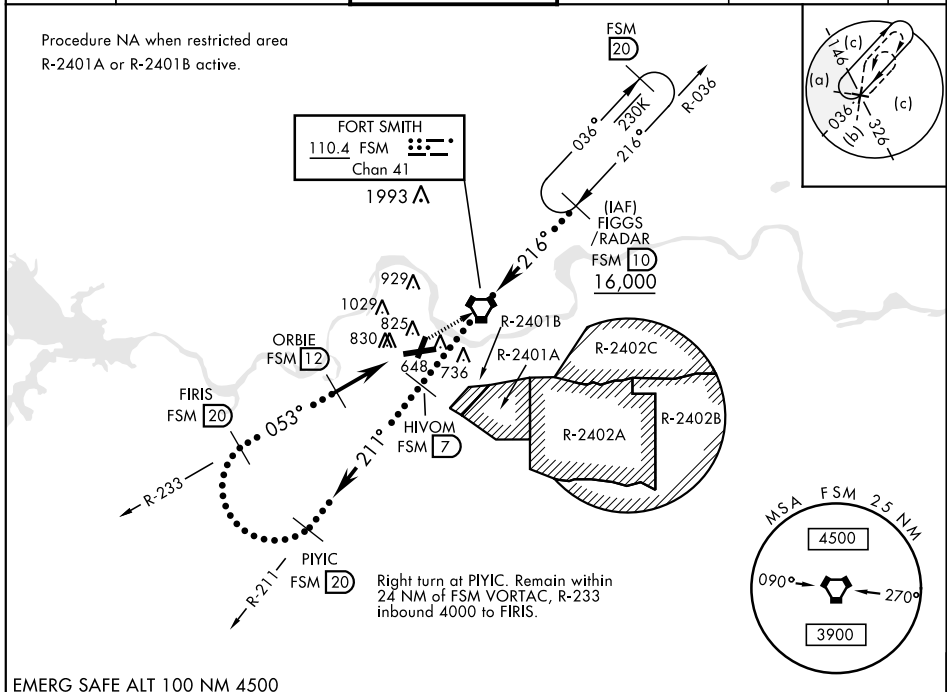
VORTAC FSM 110.4 Chan 41	APCH CRS 053°	Rwy Idg TDZE 469 Arprt Elev 469	JAL-631 [USAF]	FORT SMITH REGIONAL (KFMS)
--	-------------------------	---	----------------	----------------------------

M * Circling NA NW Rwy 7 and 19 for CAT E.
Circling to Rwy 1 NA at night.

MALSR 

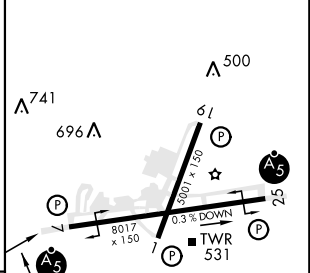
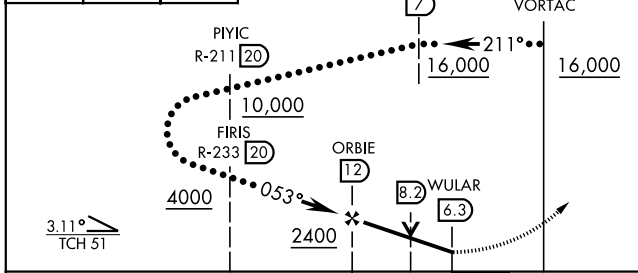
MISSED APPROACH: Climb to 4000 direct FSM VORTAC and on R-036 to FIGGS (FSM R-036/10 DME) and hold.

ATIS ★ 126.3	RAZORBACK APP CON 120.9 343.75	FORT SMITH TOWER ★ 118.3 (CTAF) 323.175	GND CON 121.9 275.8	CLNC DEL 133.85 278.3	ASR
------------------------	--	---	-------------------------------	---------------------------------	-----



EMERG SAFE ALT 100 NM 4500

4000	FSM	FSM R-036	ELEV 469	TDZE 469
------	-----	-----------	----------	----------



CATEGORY	C	D	E	
S-7	1120-1 $\frac{1}{8}$	651 (700-1 $\frac{1}{8}$)		
CIRCLING *	1140-2 671 (700-2)	1140-2 $\frac{1}{4}$ 671 (700-2 $\frac{1}{4}$)	1260-2 $\frac{3}{4}$ 791 (800-2 $\frac{3}{4}$)	MIRL Rwy 1-19 \downarrow HIRL Rwy 7-25 \downarrow

SC-1, 25 MAR 2021 to 22 APR 2021

SC-1, 25 MAR 2021 to 22 APR 2021