

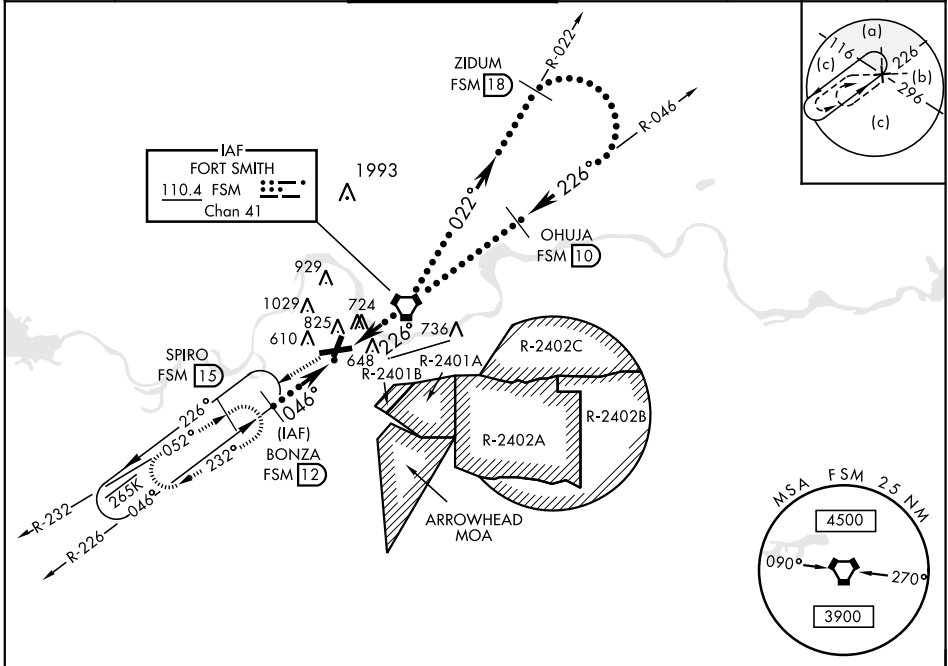
VORTAC FSM 110.4 Chan 41	APCH CRS 226°	Rwy Idg THRE 444 Arprt Elev 469	JAL-631 [USAF]	FORT SMITH REGIONAL (KF5M)
--	-------------------------	---	----------------	----------------------------

▼ * Circling NA NW Rwy 7 and 19 for CAT E.
 Circling NA for CAT E when R-2401B is active.
 Circling to Rwy 1 NA at night.

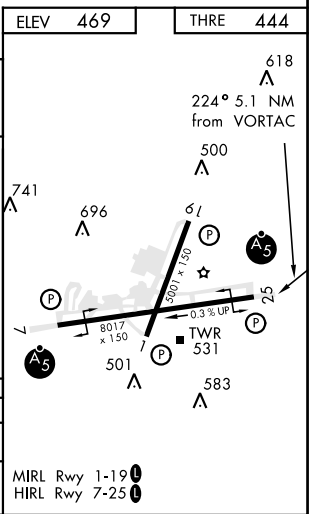
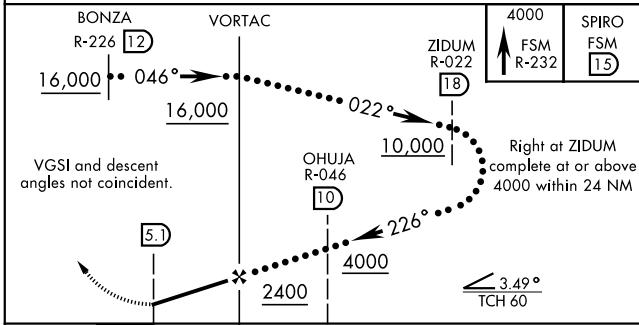
MALSR 

MISSED APPROACH: Climb to 4000 on FSM VORTAC R-232 to SPIRO (FSM R-232/15 DME) and hold, continue climb in hold to 4000.

ATIS ★ 126.3	RAZORBACK APP CON 120.9 343.75	FORT SMITH TOWER ★ 118.3 (CTAF) 0 323.175	GND CON 121.9 275.8	CLNC DEL 133.85 278.3	ASR
------------------------	--	---	-------------------------------	---------------------------------	-----



EMERG SAFE ALT 100 NM 4500



CATEGORY	C	D	E
S-25	980-1½	536 (600-1½)	
CIRCLING *	1140-2 671 (700-2)	1140-2¼ 671 (700-2¼)	1260-2¾ 791 (800-2¾)

SC-1, 25 MAR 2021 to 22 APR 2021

SC-1, 25 MAR 2021 to 22 APR 2021